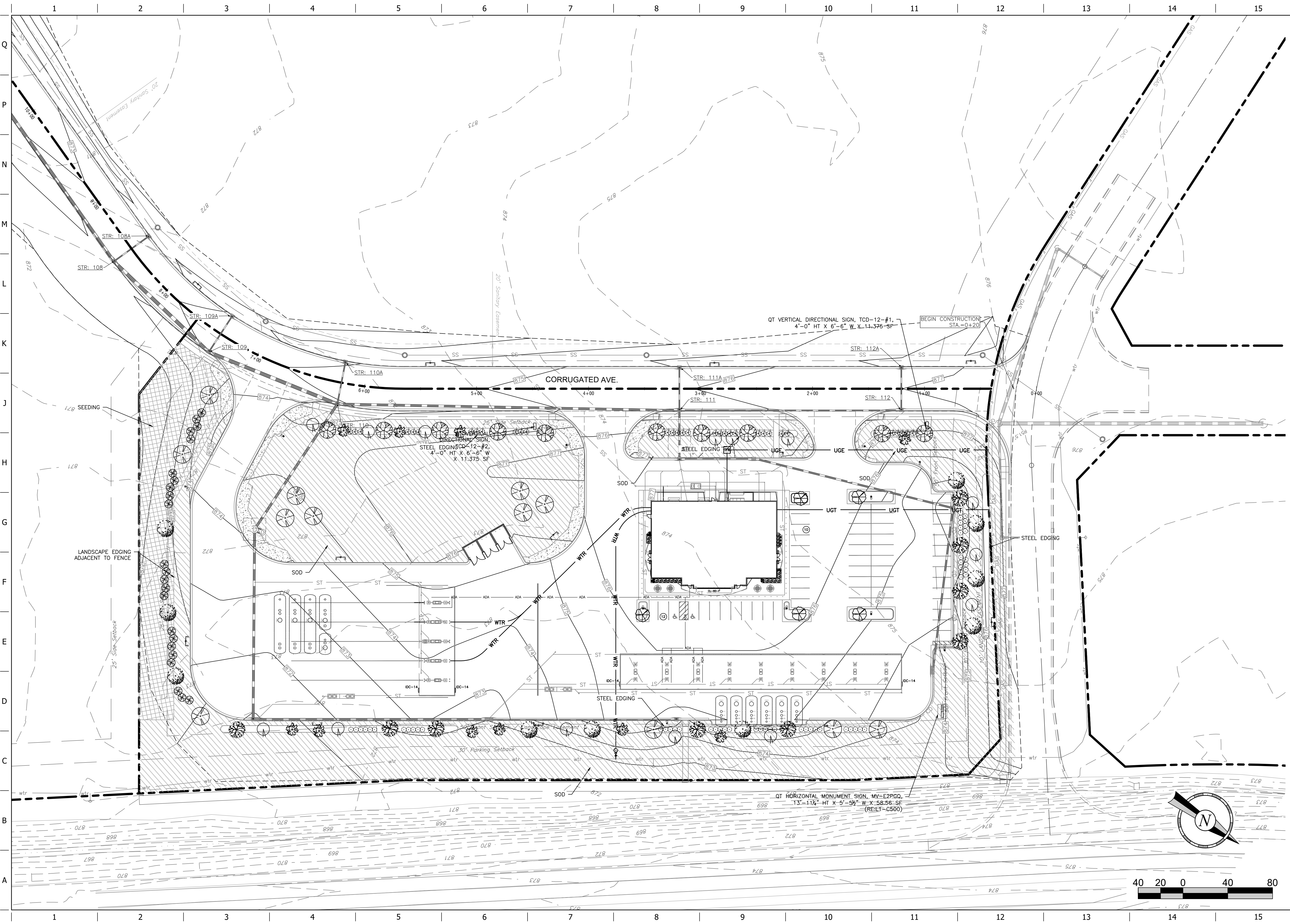


FILE LOCATION: N:\Projects\2022\12064 - INDY\12064-02 - QuickTrip Brownsburg\2024-02-Civil (P-120 Re-roll).dwg USER: bgiss SAVED: 11/26/2025 10:12 AM PLOTTED: 11/26/2025 10:44 AM



Dillon Reynolds
PROJECT NO.: 12064.02



QuikTrip No. 7263
4713 CORRUGATED AVENUE
BROWNSBURG, INDIANA 46112



© COPYRIGHT QUIKTRIP CORPORATION 2011
ANY UNAUTHORIZED USE, REPRODUCTION,
PUBLICATION, DISTRIBUTION, OR SALE IN
WHOLE OR IN PART, IS STRICTLY FORBIDDEN.

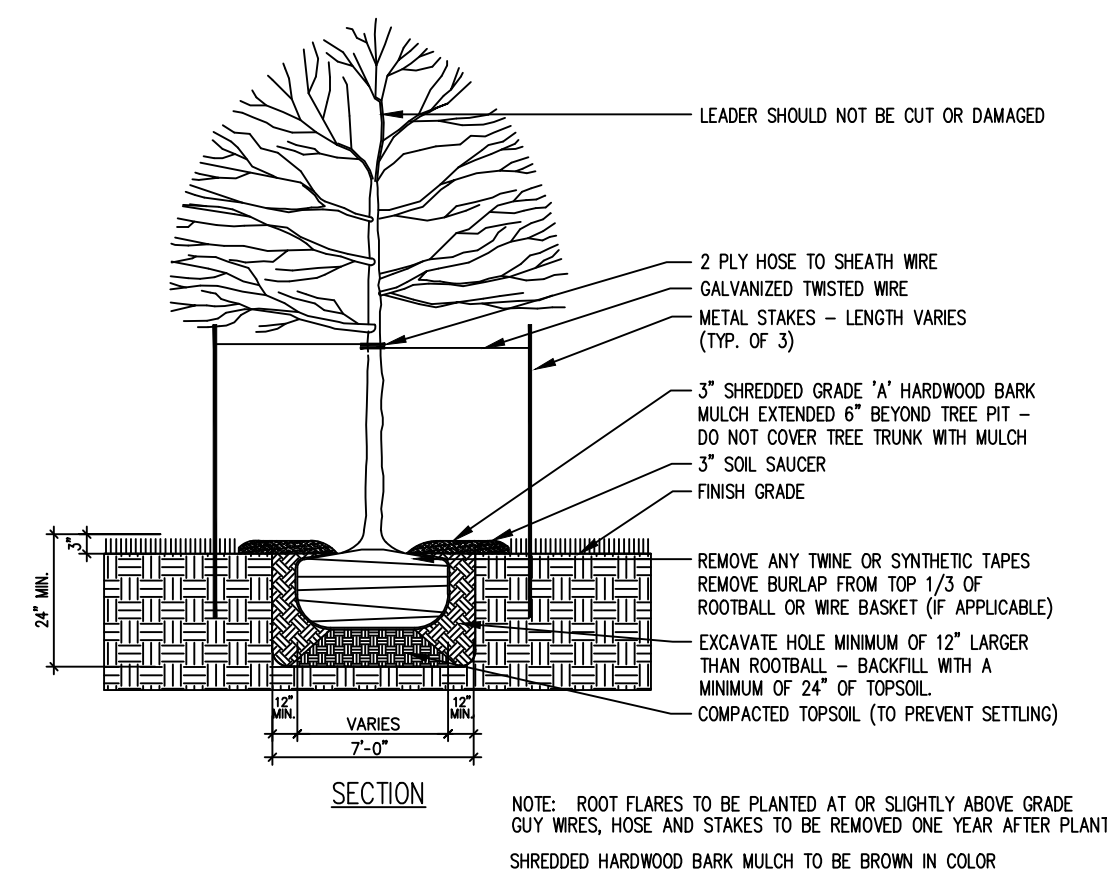
PROTOTYPE: P-120
DIVISION: REMOTE
VERSION: RTC
DESIGNED BY: ALR
DRAWN BY: ALR
REVIEWED BY: DKR

REV	DATE	DESCRIPTION
6	11/12/25	PLAN REVISIONS
5	10/14/25	PLAN REVISIONS
4	07/17/25	ISSUED FOR CONSTRUCTION
3	06/07/25	BID DOCUMENTS
2	04/07/25	PRE REVISIONS
1	02/28/25	BID DOCUMENTS

SHEET TITLE:
LANDSCAPE PLAN

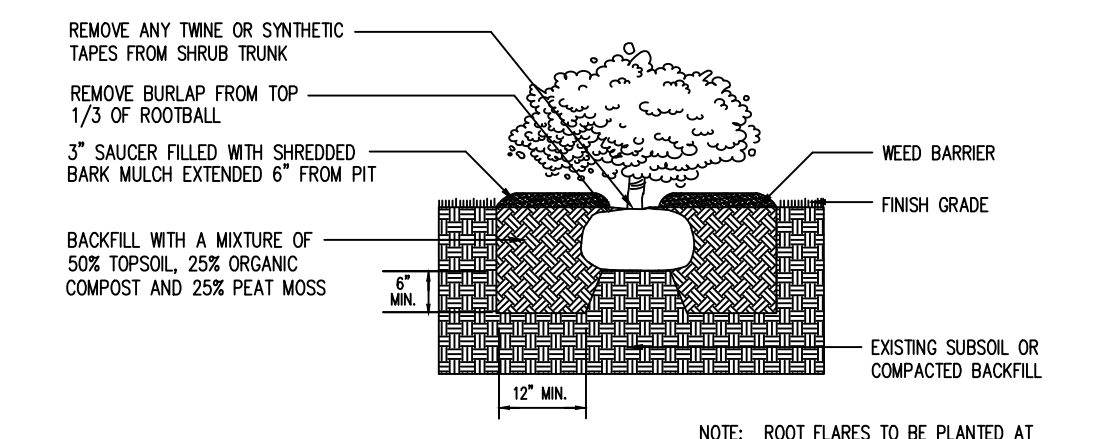
SHEET NUMBER:
L100

ORIGINAL ISSUE DATE: 08/29/2023



DECIDUOUS TREE DETAIL

NOT TO SCALE



SHRUB DETAIL

PLANTING NOTES:

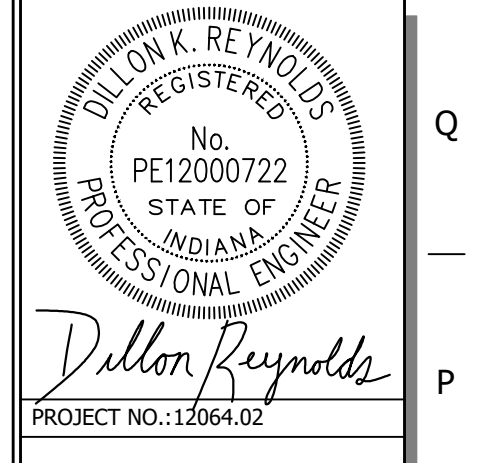
1. IN CASE OF DISCREPANCIES BETWEEN THE PLAN AND THE PLANT LIST, THE PLAN SHALL DICTATE
2. ALL SHRUB AND TREE PLANTING AREAS TO BE COVERED WITH 3" LAYER OF SHREDDED HARDWOOD BARK MULCH THAT IS BROWN IN COLOR.
3. ALL BACKFILL FOR TREE AND SHRUB PLANTINGS SHALL BE FROM EXISTING SOILS. A 5-10-5 ANALYSIS SLOW RELEASE FERTILIZER SHALL BE INCORPORATED INTO BACKFILL AT APPROVED RATES.
4. FINAL PLACEMENT OF PLANT MATERIALS, ETC. SHALL BE APPROVED BY THE LANDSCAPE ARCHITECT PRIOR TO PLANTING OPERATIONS. ALL TREE LOCATIONS SHALL BE MARKED WITH A WOOD STAKE INDICATING VARIETY AND SIZE OF TREE. PLANTING BED LINES SHALL BE MARKED WITH HIGHLY VISIBLE PAINT LINES WITH OCCASIONAL WOOD STAKES FOR REFERENCE. ALL STAKES SHALL BE REMOVED FOLLOWING PLANTING OPERATIONS. LANDSCAPE ARCHITECT RESERVES THE RIGHT TO ADJUST PLANT LOCATIONS ON THE SITE.
5. NO SUBSTITUTIONS OF PLANT MATERIALS WILL BE ALLOWED. IF PLANTS ARE NOT AVAILABLE, THE CONTRACTOR SHALL NOTIFY LANDSCAPE ARCHITECT PRIOR TO BIDDING IN WRITING. PLANTS MAY BE INSPECTED AND APPROVED OR REJECTED ON THE JOB SITE BY THE LANDSCAPE ARCHITECT.
6. ALL PLANTS SHALL MEET OR EXCEED AMERICAN STANDARDS FOR NURSERY STOCK, ANSI Z60.1-2004.
7. PLANTS AND ALL OTHER MATERIALS TO BE STORED ON SITE WILL BE PLACED WHERE THEY WILL NOT CONFLICT WITH CONSTRUCTION OPERATIONS.
8. CONTRACTOR TO OBTAIN AND PAY FOR ALL PERMITS AND FEES THAT MAY BE REQUIRED FOR HIS PORTION OF THE WORK.
9. CONTRACTOR SHALL NOTIFY LANDSCAPE ARCHITECT IN WRITING PRIOR TO BID DATE OF ANY PLANTS THEY FEEL MAY NOT SURVIVE IN LOCATIONS AS NOTED ON THE PLANS.
10. ALL LANDSCAPE PLANTINGS TO BE MAINTAINED BY CONTRACTOR FOR 60 DAYS FOLLOWING PLANTING. GUY WIRES, HOSE AND STAKES TO BE REMOVED ONE YEAR AFTER PLANTING. MAINTENANCE TO INCLUDE WATERING, WEEDING, CULTIVATING, MULCHING, MOWING, AND ALL OTHER NECESSARY OPERATIONS REQUIRED FOR PROPER ESTABLISHMENT OF PLANTINGS.
11. ALL INSTALLED PLANTINGS SHALL BE APPROPRIATELY WATERED FOR A MINIMUM PERIOD OF ONE YEAR TO ALLOW FOR THEIR ESTABLISHMENT
12. ALL LANDSCAPE PLANTINGS SHALL BE GUARANTEED FOR A PERIOD OF ONE YEAR FOLLOWING FINAL INSPECTION BY LANDSCAPE ARCHITECT. AT END OF THIS PERIOD, PLANT MATERIAL TERMED DEAD OR UNSATISFACTORY BY LANDSCAPE ARCHITECT SHALL BE REPLACED AT NO ADDITIONAL CHARGE BY THE LANDSCAPE CONTRACTOR.

Landscape Schedule

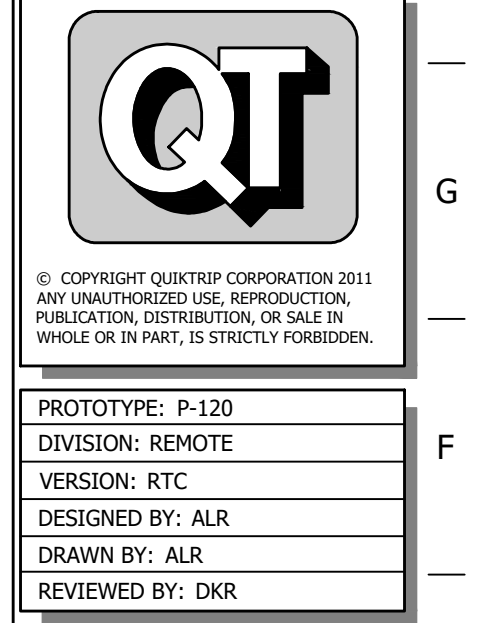
USE	SYMBOL	COMMON NAME <i>Botanical Name</i>	MINIMUM SIZE/ HEIGHT/SPREAD	QUANTITIES	COMMENTS
SHRUBS	⊙	BLACK CHOKEBERRY <i>Taxus x media 'Wardii'</i>	HEIGHT/SPREAD 18" X 12" MIN	12 EA.	SEE LANDSCAPE PLAN AND ASSOCIATED DETAILS FOR LANDSCAPE BED LOCATIONS AND SHRUB SPACING
	⊙	COMPACT INKBERRY <i>Ilex glabra 'Compacta'</i>	HEIGHT/SPREAD 24" X 30" MIN	19 EA.	
	⊙	NICK'S COMPACT JUNIPER <i>Juniperus chinensis 'Nick's Compact'</i>	HEIGHT/SPREAD 24" X 18" MIN	32 EA.	
	⊙	MOHAWK VIBURNUM <i>Viburnum x burkwoodii 'Mohawk'</i>	HEIGHT/SPREAD 30" X 20" MIN	23 EA.	
TREES	⊙	WARD'S YEW <i>Taxus x media 'Wardii'</i>	HEIGHT/SPREAD 24" X 18" HT MIN	54 EA.	SEE LANDSCAPE PLAN AND ASSOCIATED DETAILS FOR TREE PLACEMENT, AND PLANTING SPECIFICATIONS
	⊙	FRONTIER ELM <i>Ulmus x 'Frontier'</i>	2.5" CALIPER 12' HT	10 EA.	
	⊙	GREEN MOUNTAIN SUGAR MAPLE <i>Acer saccharum 'Green Mountain'</i>	2.5" CALIPER 12' HT	9 EA.	
	⊙	PRINCESS DIANA SERVICEBERRY <i>Amelanchier x grandiflora 'Princess Diana'</i>	2.0" CALIPER 10' HT	10 EA.	
	⊙	PRINCETON SENTRY GINKGO <i>Ginkgo biloba 'Princeton Sentry'</i>	2.5" CALIPER 12' HT	5 EA.	
	⊙	REDBUD - SINGLE STEM <i>Cercis x canadensis</i>	2.0" CALIPER 10' HT	14 EA.	
	⊙	RED OAK <i>Quercus rubra</i>	2.5" CALIPER 12' HT	12 EA.	
	⊙	SHADEMASTER HONEY LOCUST <i>Gleditsia triacanthos 'Shademaster'</i>	2.5" CALIPER 12' HT	10 EA.	
	⊙	DWARF FOUNTAIN GRASS <i>Pennisetum alopecuroides 'Hameln'</i>	12" - 18" MIN.	16 EA.	
	MISC.	RTF	RHIZOMATOUS TALL FESCUE SOD		
RTF		RHIZOMATOUS TALL FESCUE SEED		13,700 S.F.	

LANDSCAPE REQUIREMENTS - UPDATED ORDINANCE

	REQUIRED ORDINANCE	PROVIDED
ON-SITE REQUIREMENTS	5.11 A COMMERCIAL DEVELOPMENT 4 SHADE TREES AND 8 LARGE SHRUBS PER HALF ACRE OF OPEN SPACE OPEN SPACE AREA: 1.46AC/5 = (2.92) 4 = 11.7 1.46AC/5 = (2.92) 8 = 23.4	SHADE TREES = 12 LARGE SHRUBS = 23
	5.10 D LANDSCAPING IS REQUIRED ALONG PERIMETER ROADS OF A SUBDIVISION AND ALONG ALL STREET FRONTAGES (PUBLIC OR PRIVATE STREETS, NOT INCLUDING SHARED ACCESS DRIVES OR DRIVEWAYS). COMMERCIAL USE PER 100LF: 1.5 SHADE OR EVERGREEN TREES 1.5 ORNAMENTAL TREES 5 SHRUBS RONALD REAGAN PKWY 720LF 720/100 = 7.2 (1.5) = 10.8 SHADE OR EVERGREEN TREES = 11 ORNAMENTAL TREES = 11 SHRUBS = 36 GENERATIONS STREET 275 LF 275/100 = 2.75 (1.5) = 4.12 SHADE OR EVERGREEN TREES = 4 ORNAMENTAL TREES = 4 SHRUBS = 14 CORRUGATED AVENUE 650 LF 650/100 = 6.5 (1.5) = 9.75 SHADE OR EVERGREEN TREES = 10 ORNAMENTAL TREES = 10 SHRUBS = 33	SHADE OR EVERGREEN TREES = 11 ORNAMENTAL TREES = 11 SHRUBS = 36 SHADE OR EVERGREEN TREES = 4 ORNAMENTAL TREES = 4 SHRUBS = 14 SHADE OR EVERGREEN TREES = 10 ORNAMENTAL TREES = 10 SHRUBS = 33
	5.11 C LANDSCAPE ISLANDS MUST BE A MINIMUM AREA OF 160 SF. 1 TREE PER INDIVIDUAL ISLAND OR PER 160 SF. LANDSCAPE ISLANDS ARE REQUIRED AT THE ENDS OF ALL ROWS OF PARKING. SHRUBS ARE BROADLY DISCOURAGED FOR ISLANDS TO AVOID FUTURE GROWTH THAT BLOCKS VISIBILITY. SHORT GRASSES OR FLOWERS MAY BE INCLUDED IN ISLANDS AS DESIRED.	TREES = 6
PERIMETER PARKING LOT REQUIREMENTS	5.11 C ONE SHADE TREE AT 35 FEET ON CENTER FOUR EVERGREEN SHRUBS PER 35 LF. YARD LENGTH 100 LF 140/35 = 4.0 (4) = 4 SHADE TREES 140/35 = 4.0 (4) = 16 EVERGREEN SHRUBS	SHADE TREES = 4 EVERGREEN SHRUBS = 16 SHADE TREES = 4 EVERGREEN SHRUBS = 16
FOUNDATION PLANTINGS	5.11 D FOUNDATION PLANTINGS SHALL BE PROVIDED TO HELP SOFTEN LONG EXPANSES OF WALLS AND CREATE ATTRACTIVE BUILDING FACADES. AMOUNT: FACADES UNDER 100' IN LENGTH. ANY FRONT OR SIDE FACADE SHALL INCLUDE FOUNDATION PLANTINGS AT A RATE OF 1 SHRUB OR ORNAMENTAL TREE PER 10 FEET OF FACADE LENGTH. FACADES 100' IN LENGTH OR MORE. ANY FRONT OR SIDE FACADE SHALL INCLUDE PLANTINGS AT A RATE OF 2 SHRUBS OR ORNAMENTAL TREES PER 10' OF FACADE LENGTH FRONT/REAR = 112LF 112/10 = 11.2 (2) = 22.4 SHRUBS OR ORNAMENTAL TREES = 22 PER FACADE SIDES = 70LF 70/10 = 7 (1) = 7 SHRUBS OR ORNAMENTAL TREES = 7 PER SIDE ORNAMENTAL GRASSES AND PERENNIAL FLOWERS MAY BE PLACED IN LIEU OF REQUIRED SHRUBS OR TREES AT THE RATES LISTED BELOW a. NO MORE THAN 20% OF THE REQUIRED PLANT MATERIAL MAY BE ORNAMENTAL GRASS. b. NO MORE THAN 10% OF THE REQUIRED MATERIAL MAY BE PERENNIAL FLOWER BEDS.	
	5.10 A-C NONE REQUIRED PER ORDINANCE	



QuikTrip No. 7263
4713 CORRUGATED AVENUE
BROWNSBURG, INDIANA 46112



REV	DATE	DESCRIPTION
6	11/12/2025	PLAN REVISIONS
5	10/14/25	PLAN REVISIONS
4	07/17/25	ISSUE FOR CONSTRUCTION
3	05/01/25	BID DOCUMENTS
2	04/02/25	RFP REVISIONS
1	02/28/25	BID DOCUMENTS

ORIGINAL ISSUE DATE: 08/29/2023

SHEET TITLE:
LANDSCAPE TABLES

SHEET NUMBER:
L101

FILE LOCATION\Projects 2022\2064 - INDY\2064-02 - QuikTrip Brownsburg\2064-02_Civil (P-120 Re-roll).dwg TAB NAME: Landscape Tables USER: rmmemo SAVED: 11/12/2025 10:47 AM PLOTTED: 11/26/2025 9:54 AM