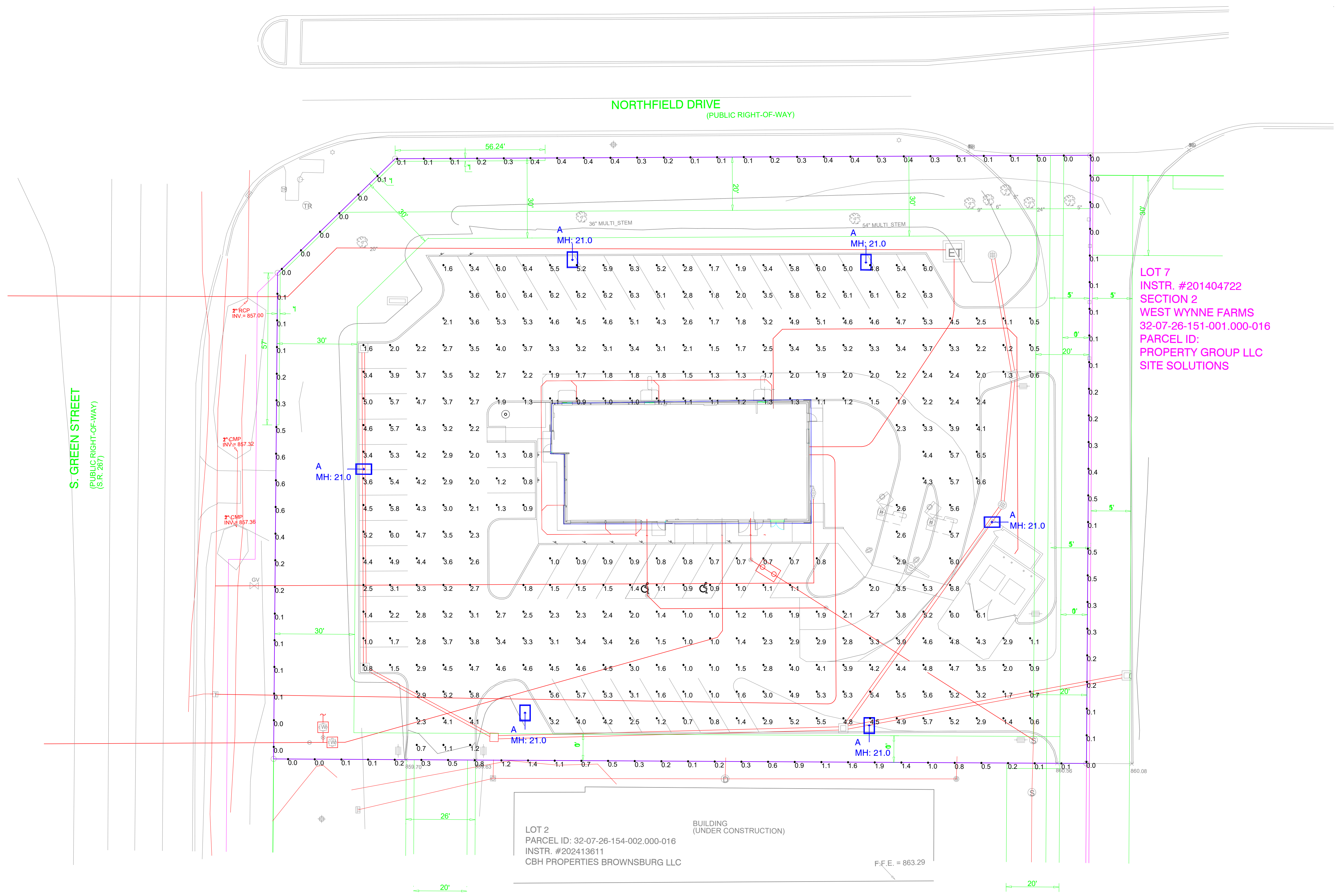
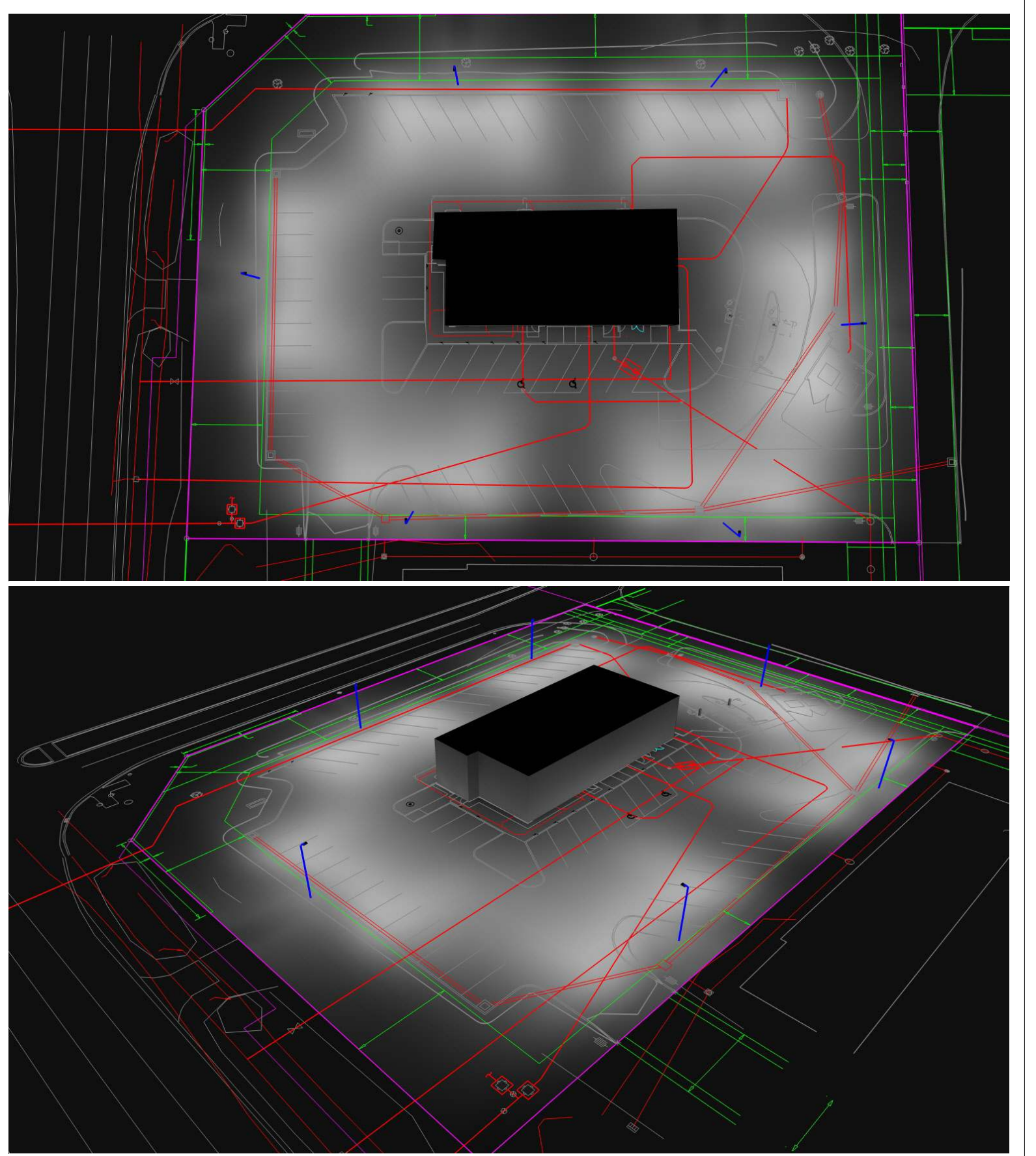


NOTES:
 1. THE FOOTCANDLE LEVELS AS SHOWN ARE BASED ON THE FOLLOWING CRITERIA. ANY SUBSTITUTIONS IN SPECIFIED FIXTURES OR CHANGES TO LAYOUT WILL AFFECT LIGHTING LEVELS SHOWN AND WILL NOT BE THE RESPONSIBILITY OF SECURITY LIGHTING.
 2. DISTANCE BETWEEN READINGS _____ 10'



LOT 7
 INSTR. #201404722
 SECTION 2
 WEST WYNNE FARMS
 32-07-26-151-001.000-016
 PARCEL ID:
 PROPERTY GROUP LLC
 SITE SOLUTIONS

LOT 2
 PARCEL ID: 32-07-26-154-002.000-016
 INSTR. #202413811
 CBH PROPERTIES BROWNSBURG LLC
 F.F.E. = 863.29



Pole Fixtures Are Full Cutoff
 Tilt=0
 Calculation Grids Are At Grade
 Pole Light Mounting Height=21ft
 (18' Pole + 3' Base)

Calculation Summary							
Label	CalcType	Units	Avg	Max	Min	Avg/Min	Max/Min
PAVED SURFACE READINGS	Illuminance	Fc	3.14	6.8	0.5	6.28	13.60
Propertyline	Illuminance	Fc	0.32	1.9	0.0	N.A.	N.A.

Luminaire Schedule									
Symbol	Qty	Label	Arrangement	LLF	Description	Lum. Watts	EPA	Mtg Height	Pole Type
	6	A	Single	0.850	VP-2-320L-210-5K7-4W-UNV-A-PSS	213.9	0.607	21	SES-18-40-1-TA-GL-xx (4")

PROJECT WIND LOAD CRITERIA BASED ON:
 ASCE 7-10 WIND SPEEDS (3-SEC PEAK GUST MPH)
 50 YEAR MEAN RECURRENCE INTERVAL
 ALLOWED EPA 13.6 @ WIND LOAD 90 MPH



Regional Drawing
 # 013-1263

UNLESS OTHERWISE SPECIFIED, ALL DIMENSIONS ARE IN INCHES	
SCALE	1"=20' 0"
DRAWN BY	CLB
POINT-BY-POINT FOOTCANDLE PLOT FOR MCDONALD'S 7030 Northfield Drive BROWNSBURG, IN 46112	
NATIONAL STORE NUMBER	45201
DATE	10/30/2025
DRAWING NUMBER	A251046A.AGI

THIS DRAWING MEETS OR EXCEEDS MCDONALD'S CURRENT ILLUMINATION SPECIFICATIONS OF A 3-4 FOOTCANDLE AVERAGE, UNLESS SUPERSEDED BY OTHER REQUIREMENTS.

1. THIS LIGHTING DESIGN IS BASED ON INFORMATION SUPPLIED BY OTHERS TO SECURITY LIGHTING SYSTEMS. SITE DETAILS PROVIDED HEREON ARE REPRODUCED ONLY AS A VISUALIZATION AID. FIELD DEVIATIONS MAY SIGNIFICANTLY AFFECT PREDICTED PERFORMANCE. PRIOR TO INSTALLATION, CRITICAL SITE INFORMATION (POLE LOCATIONS, ORIENTATION, MOUNTING HEIGHT, ETC.) SHOULD BE COORDINATED WITH THE CONTRACTOR AND/OR SPECIFIER RESPONSIBLE FOR THE PROJECT.
 2. LUMINAIRE DATA IS TESTED TO INDUSTRY STANDARDS UNDER LABORATORY CONDITIONS. OPERATING VOLTAGE AND NORMAL MANUFACTURING TOLERANCES OF LAMP, BALLAST, AND LUMINAIRE MAY AFFECT FIELD RESULTS.
 3. CONFORMANCE TO FACILITY CODE AND OTHER LOCAL REQUIREMENTS IS THE RESPONSIBILITY OF THE OWNER AND/OR THE OWNER'S REPRESENTATIVE.
 4. THIS LAYOUT MAY NOT MEET TITLE 24 OR LOCAL ENERGY REQUIREMENTS. IF THIS LAYOUT NEEDS TO BE COMPLIANT WITH TITLE 24 OR OTHER ENERGY REQUIREMENTS, PLEASE CONSULT FACTORY WITH SPECIFIC DETAILS REGARDING PROJECT REQUIREMENTS SO THAT REVISIONS MAY BE MADE TO THE DRAWING.