



Prepared Exclusively for Project # 69391

7030 Northfield Dr
Brownsburg, IN 46112-9031

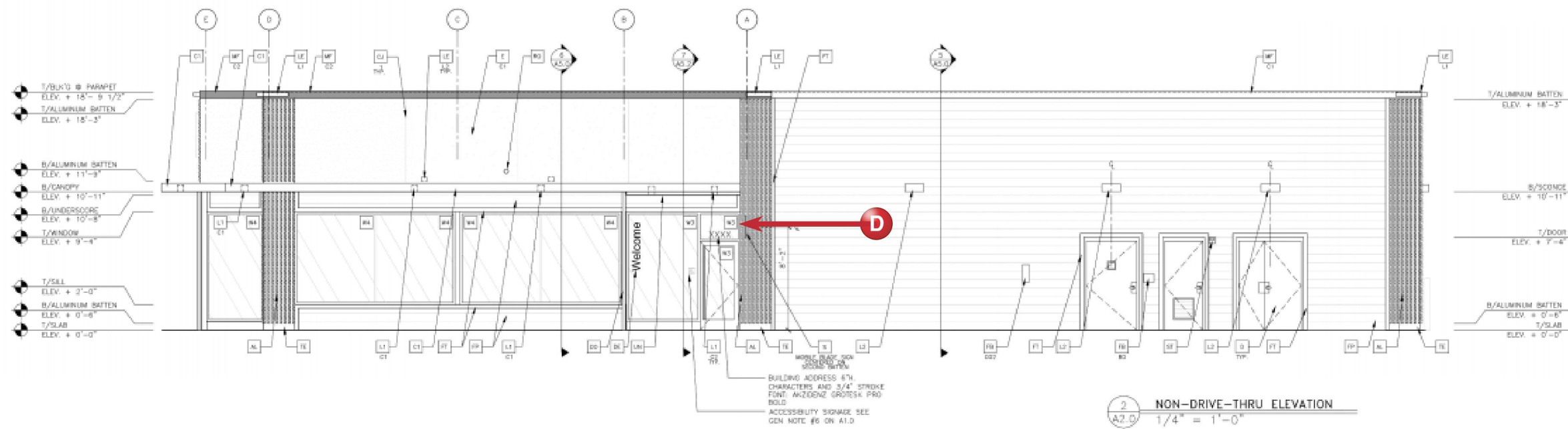
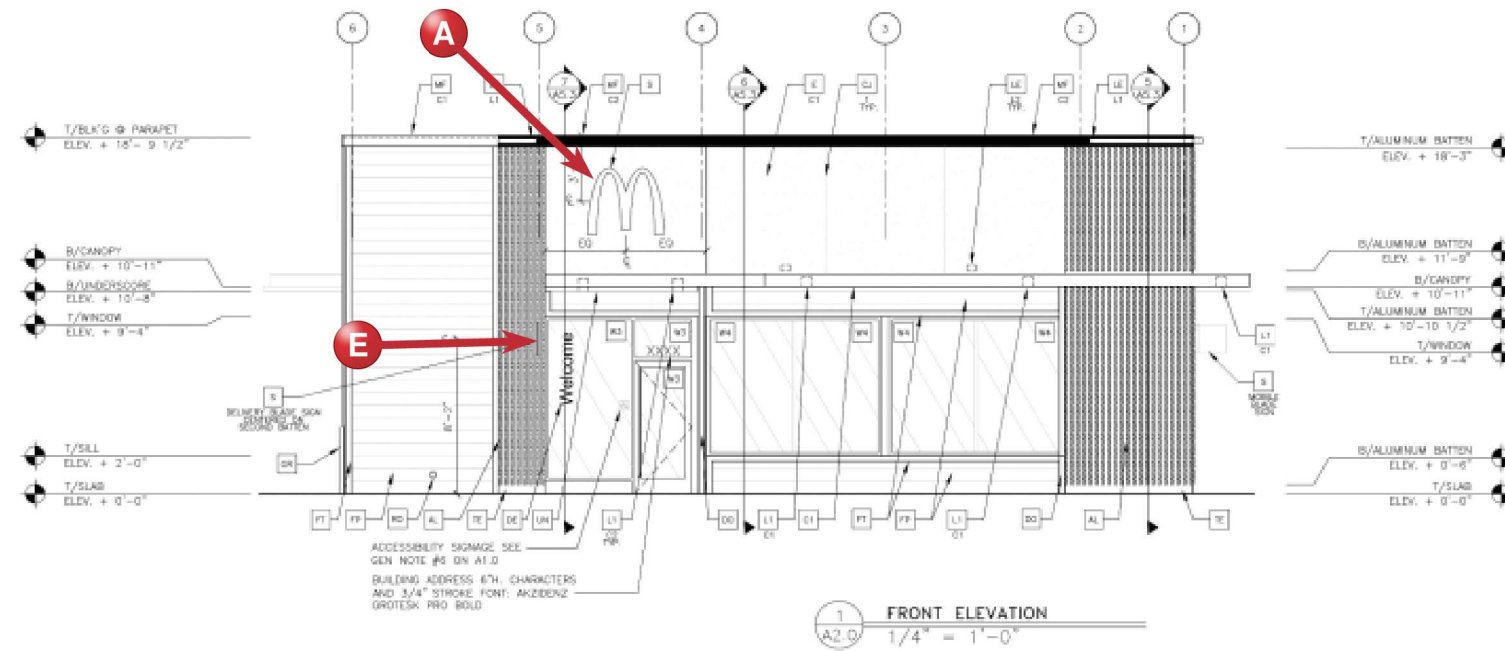
December 8, 2025

Account Manager: Kari Moyle
kmoyle@everbrite.com (414) 529-3500

COORDINATION REVIEW	US RD DPM
DATE: 12/10/2025	BY: BD
This information is being reviewed for McDonald's coordination only and does not relieve the designer of responsibility for regulatory/ code compliance as well as implementation of applicable McDonald's guidelines	
McDonald's USA, LLC	

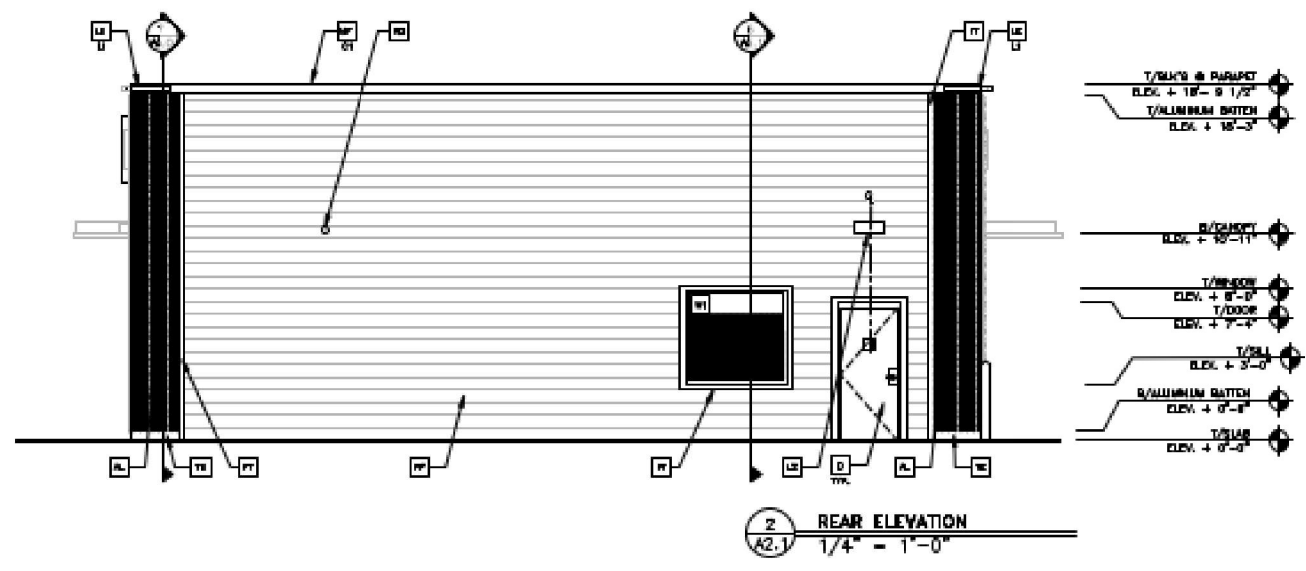
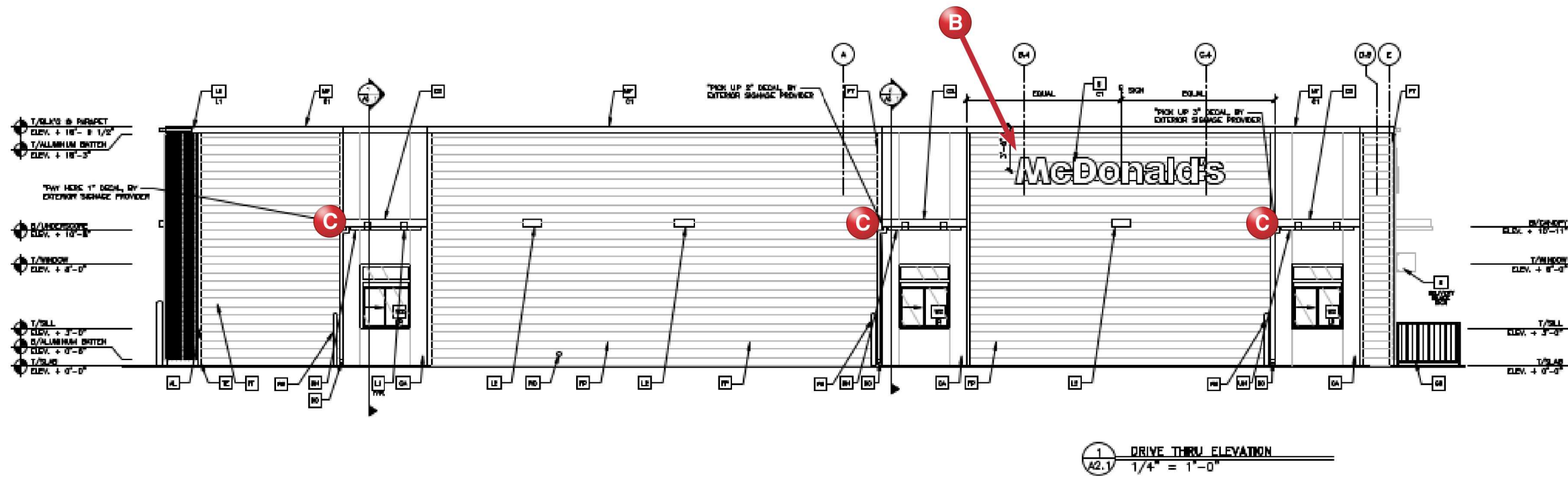
Sign Schedule

- A** 42" NG Arch 14 sq ft
- D** Mobile Order Blade Sign
- E** McDelivery Blade Sign



Sign Schedule

- B** 24" NG Wordmark 32.83 sq ft
- C** Drive-Thru Trellis Decals, 3 Windows





NORTHFIELD DRIVE
(PUBLIC RIGHT-OF-WAY)



McDONALD'S SIGN LEGEND

- ◆ McDonalD's directional sign refer to architectural and/or sign vendor plans for sign and structural details.
- ◆ NOT USED.
- ◆ McDonalD's road sign refer to architectural and/or sign vendor plans for details.
- ◆ McDonalD's drive-thru canopy refer to architectural and/or sign vendor plans for sign and structural details.
- ◆ McDonalD's digital menu boards refer to architectural and/or sign vendor plans for sign and structural details.
- ◆ McDonalD's digital free browse menu board refer to architectural and/or sign vendor plans for sign and structural details.
- ◆ McDonalD's gateway sign (double arm) refer to architectural and/or sign vendor plans for sign and structural details.
- ◆ McDonalD's full formars - ("reserved") drive-thru sign refer to architectural and/or sign vendor plans for details.
- ◆ McDonalD's mailbox - ("courier parking") sign refer to architectural and/or sign vendor plans for details.
- ◆ McDonalD's ("curbside pick up") sign refer to architectural and/or sign vendor plans for details.
- ◆ flagpole and base refer to architectural and/or sign vendor plans for sign and structural details. general contractor to coordinate with construction manager regarding illumination of flag.

NOTES:
ALL SIGNS/LOGOS/GRAPHICS SHALL BE COORDINATED BY
McDONALD'S/OPERATOR AND COORDINATED WITH SIGNAGE SERVICE BOOK
(BY OTHERS).

SITE SOLUTIONS
PROPERTY GROUP LLC
PARCEL ID:
32-07-26-151-001-005-016
WEST WYNNIE FARMS
SECTION 2
INSTR. #201404722
LOT 7

Sign Schedule

- F** Double Welcome Point Gateway-Charcoal
- G** Spring Board Canopy-Charcoal
- H** Outdoor Digital Pre-Browse
- I** Outdoor Digital Menu Board
- J** 3 sqft @36"OAH Directional Welcome w Arch
- K** 3 sqft @36"OAH Directional Thank You w Arch
- L** Drive-Thru Reserved Signage
- M** Curbside Pick Up Signage
- N** Courier Parking Sign
- O** 25' Flag Pole
- P** 5' x 5' Next Gen Monument at 60AH



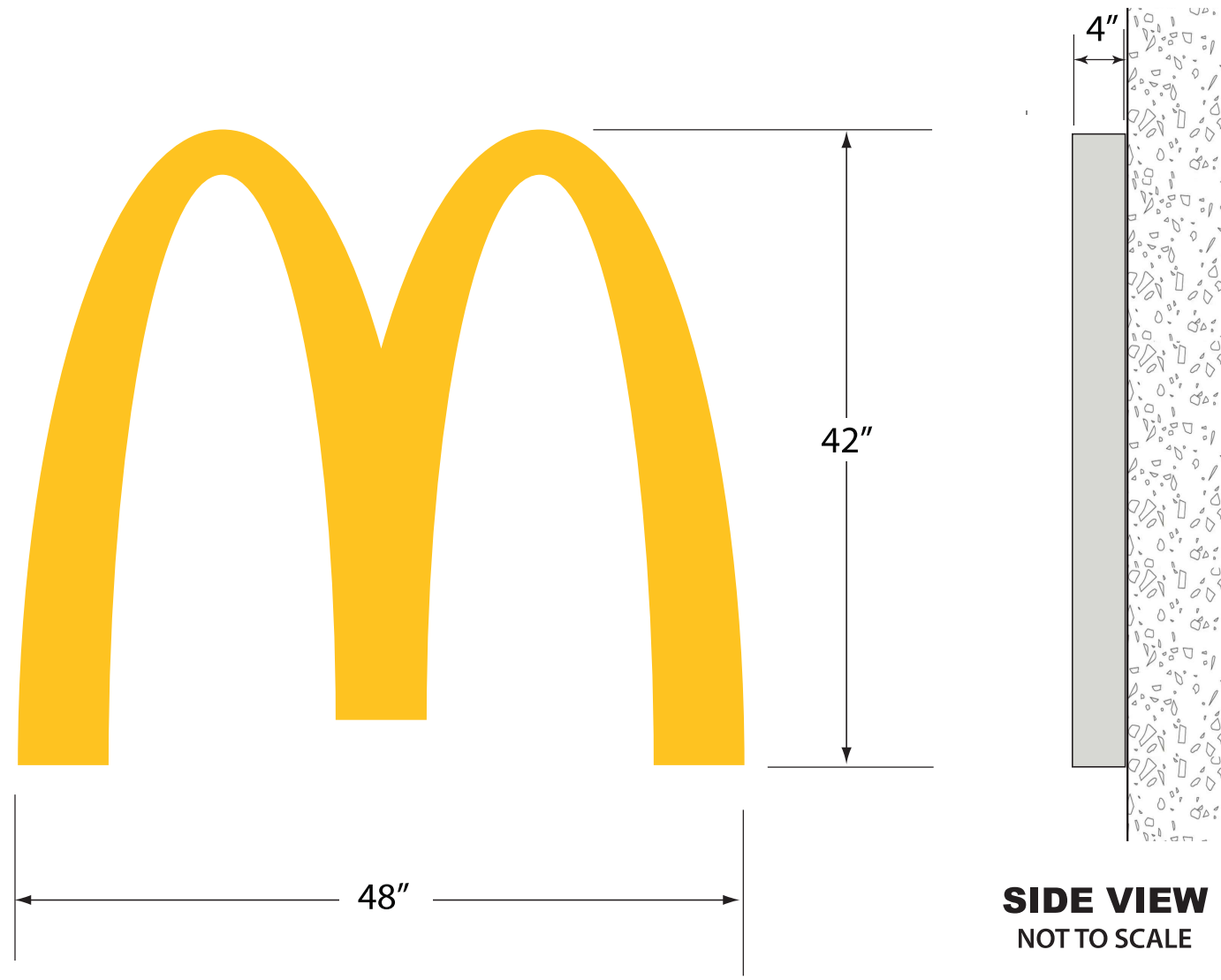
Everbrite, LLC · 4949 South 110th Street · Greenfield, WI 53228 · www.everbrite.com

Project No: 69391
Address: 7030 Northfield Dr Brownsburg, IN 46112-9031
Description: McDonald's Rest #45201

Prepared By: Kari Moyle
Date: 12/08/2025 PIF: 532583-0
Customer Signature:



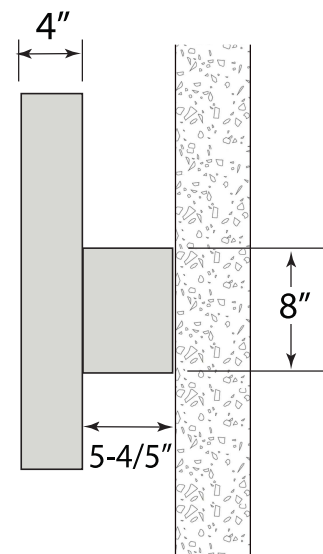
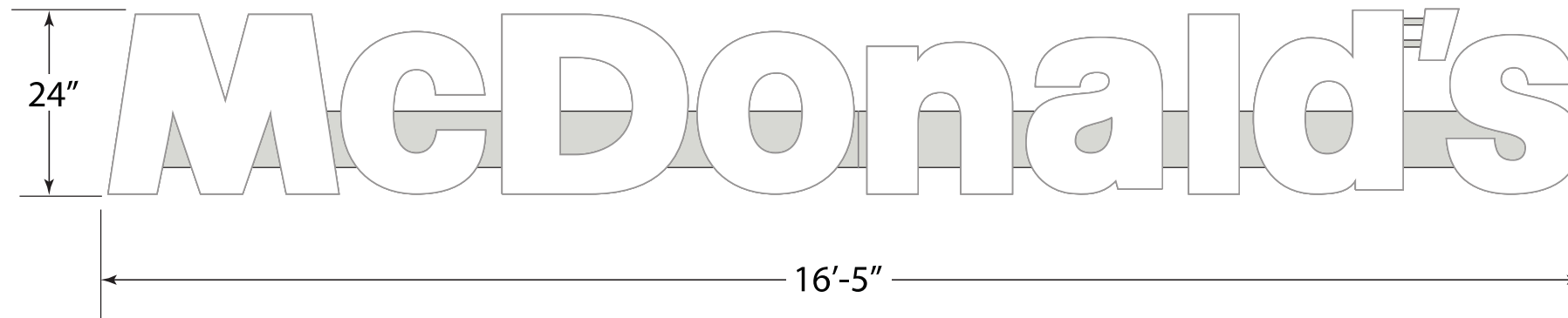
These drawings and designs are the exclusive property of Everbrite, LLC. Use or duplication in any manner, without express written permission of Everbrite, LLC, is prohibited.



SIGN DETAILS:

LED illuminated McDonald's Arch Face

Injection-molded logo with PMS123C Yellow and Next Gen Silver return



SIDE VIEW
NOT TO SCALE

SIGN DETAILS:

LED illuminated McDonald's Wordmark on Next Gen Silver raceway

Injection-molded letters with White faces and Next Gen Silver returns

Wall mount is standard. Tube mounting kit available for mansard roofs.



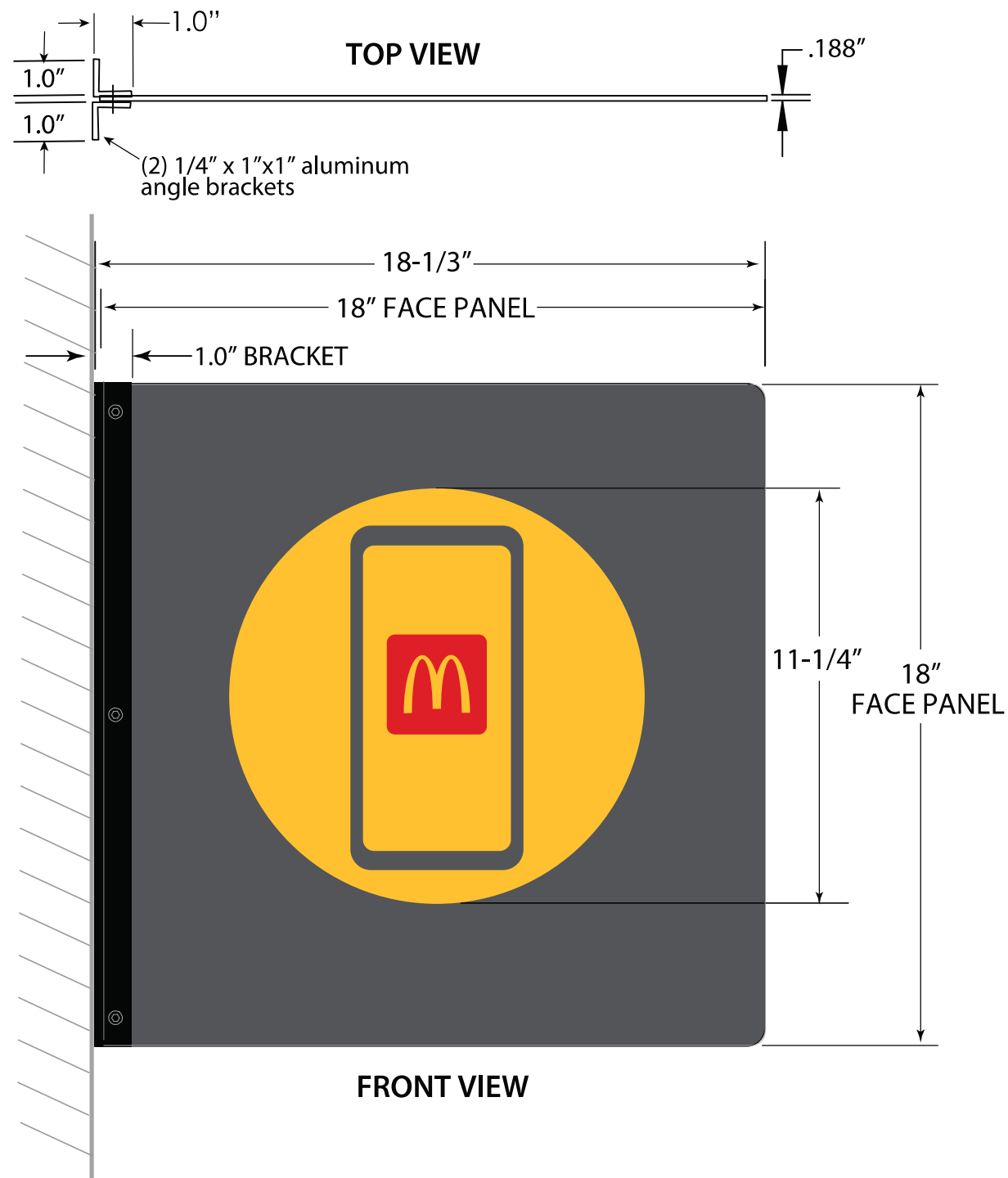
Product Details:

Decals for 48" charcoal drive-thru trellis ONLY.

White vinyl letters

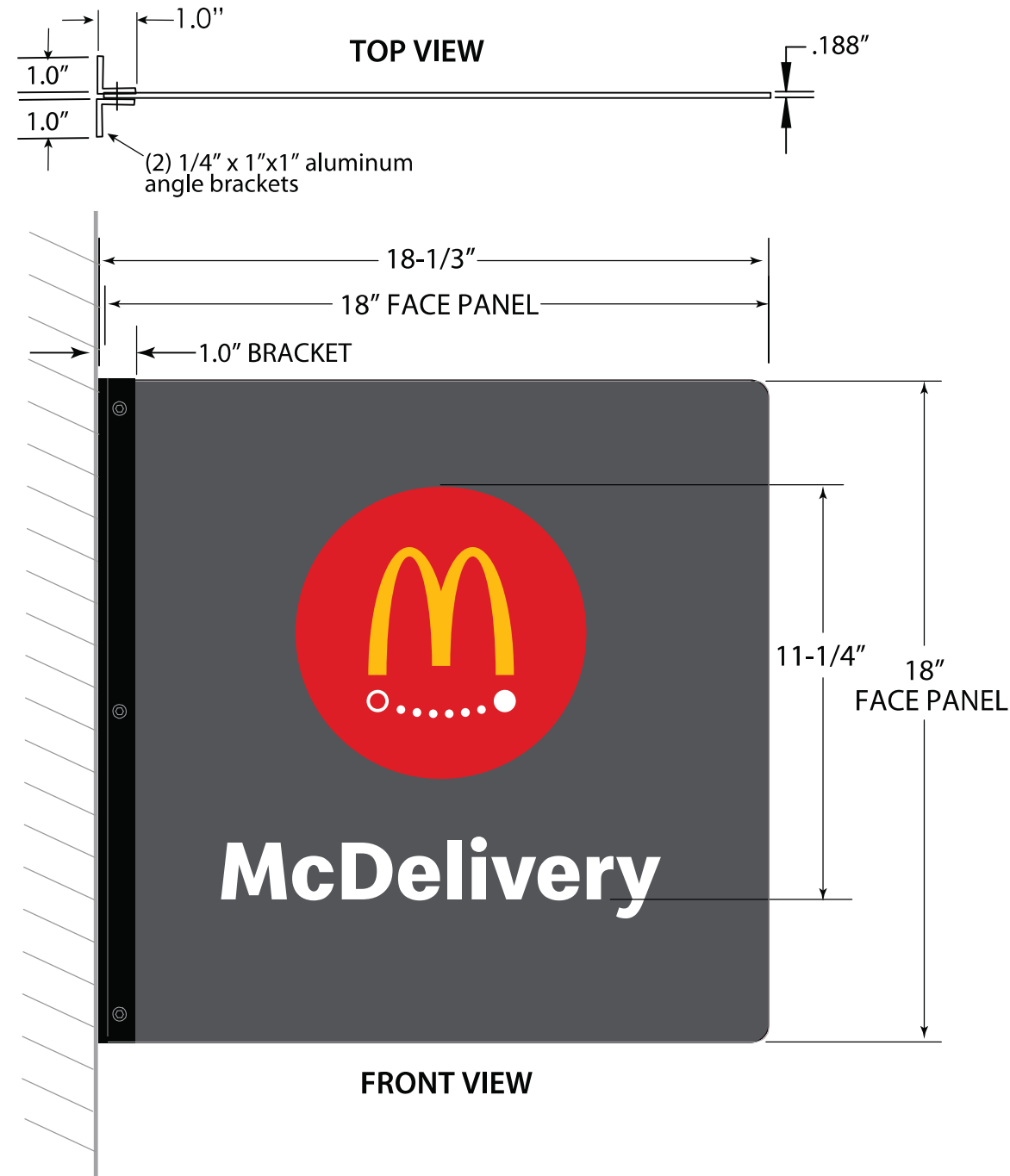
PMS 132C Yellow vinyl square with number cut out





SIGN DETAILS:

Non-illuminated double-sided face and mounting bracket
 Next Gen charcoal with vinyl Mobil Order graphic

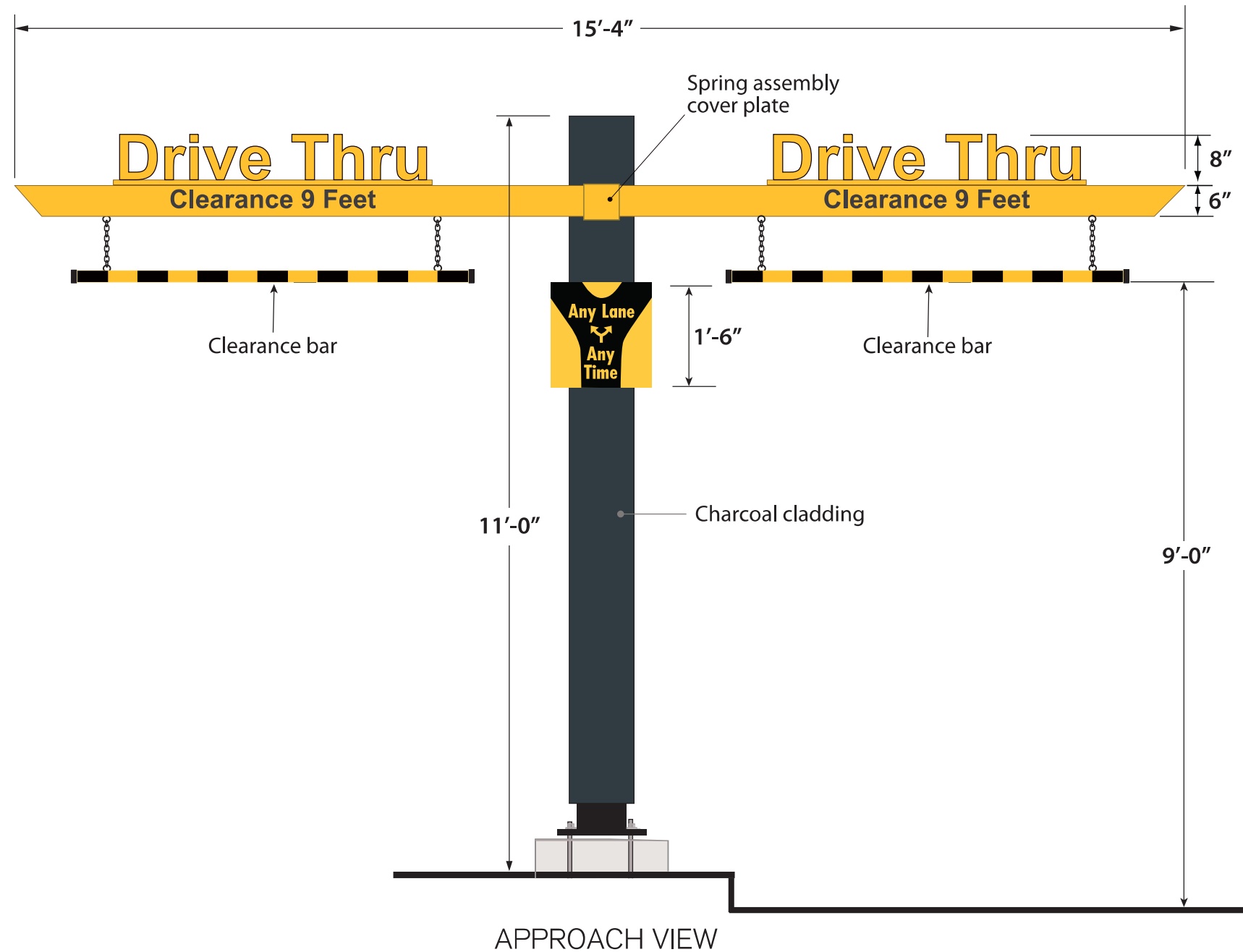


SIGN DETAILS:

Non-illuminated double-sided face and mounting bracket
 Next Gen charcoal with vinyl McDelivery graphic

Project No: 69391	Prepared By: Kari Moyle	
Address: 7030 Northfield Dr Brownsburg, IN 46112-9031	Date: 12/08/2025	PIF: 532583-0
Description: McDonald's Rest #45201	Customer Signature:	





SIGN DETAILS:

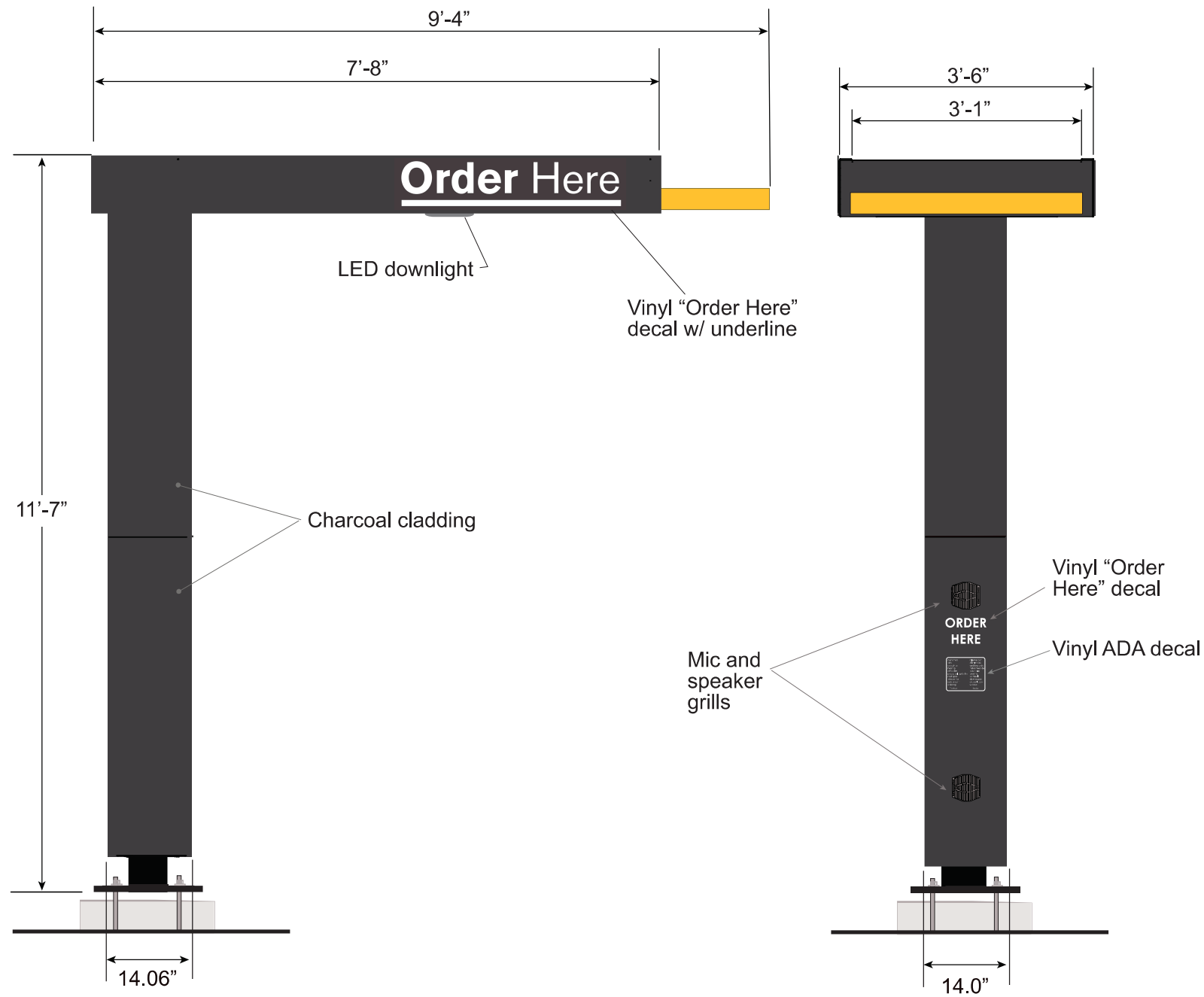
Non-illuminated clearance sign with spring loaded clearance arms

Clearance copy to be black vinyl

Adjustable PMS 123C Yellow and black bang bar

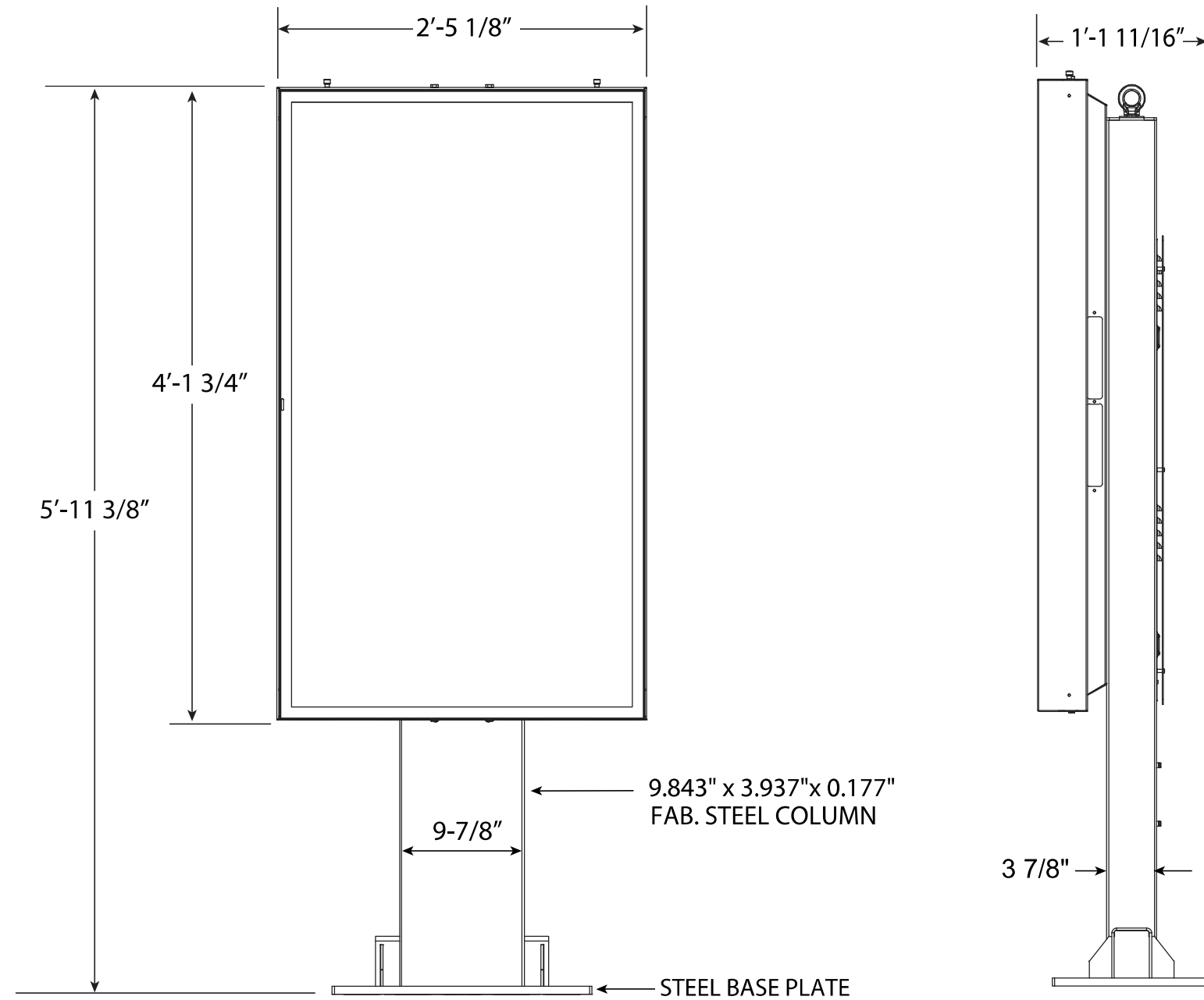
Sintra "Drive Thru" letters with reflective PMS 123C Yellow vinyl decal

PMS 123C Yellow and black "Any Lane Any Time" face



SIGN DETAILS:

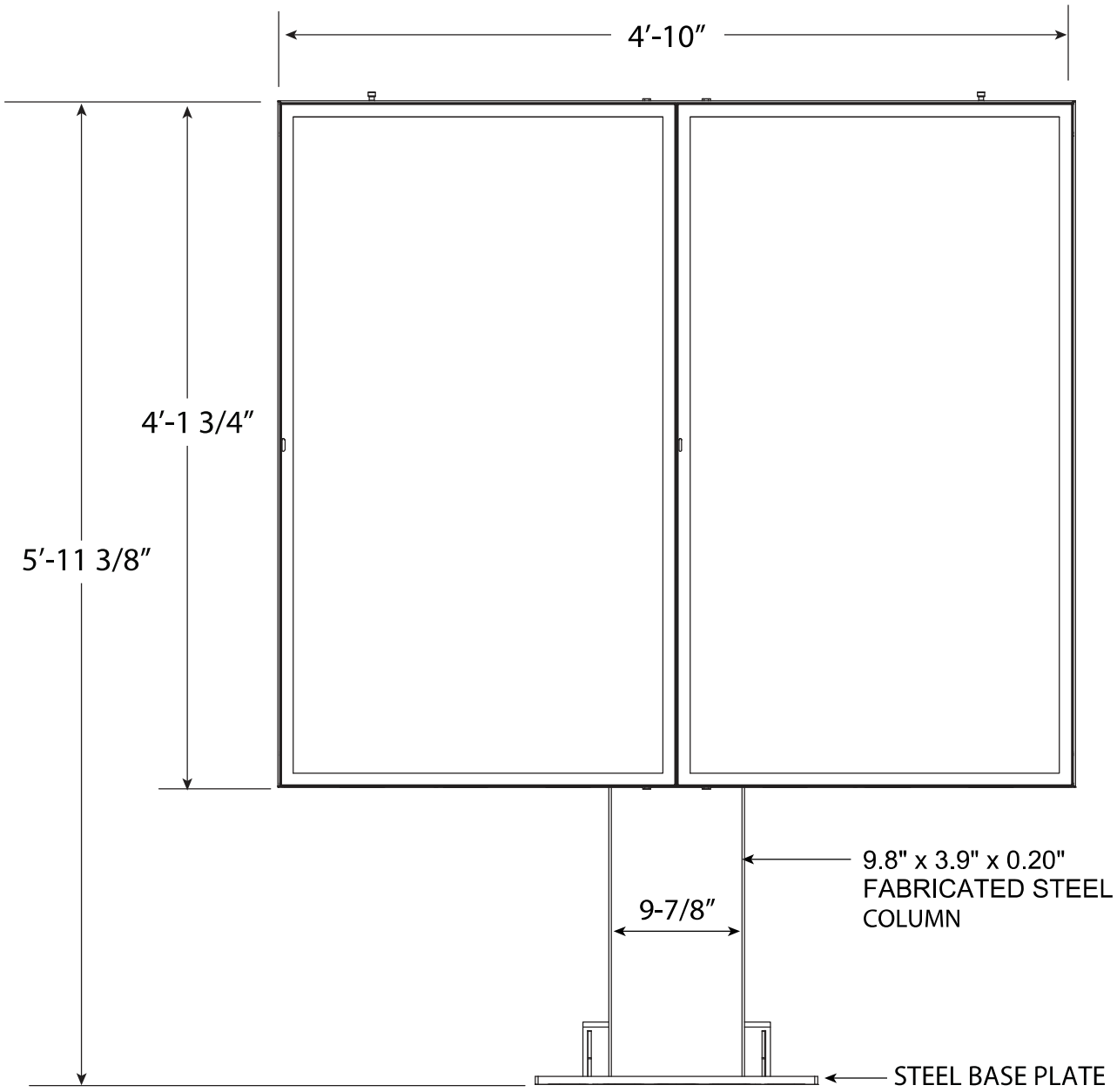
- LED illuminated order canopy and cladding
- Next Gen Charcoal with PMS 123C Yellow accents
- Reflective White vinyl Order Here letters
- Audio provided by others



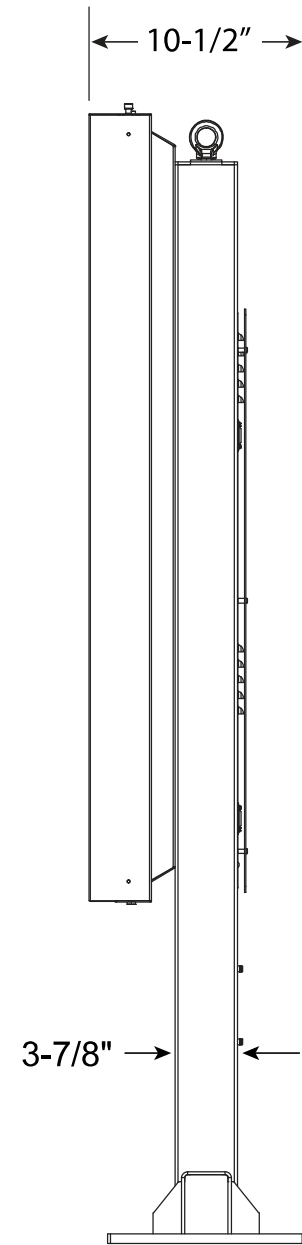
ODPB DESIGNED BY COATES



10 SQUARE FEET

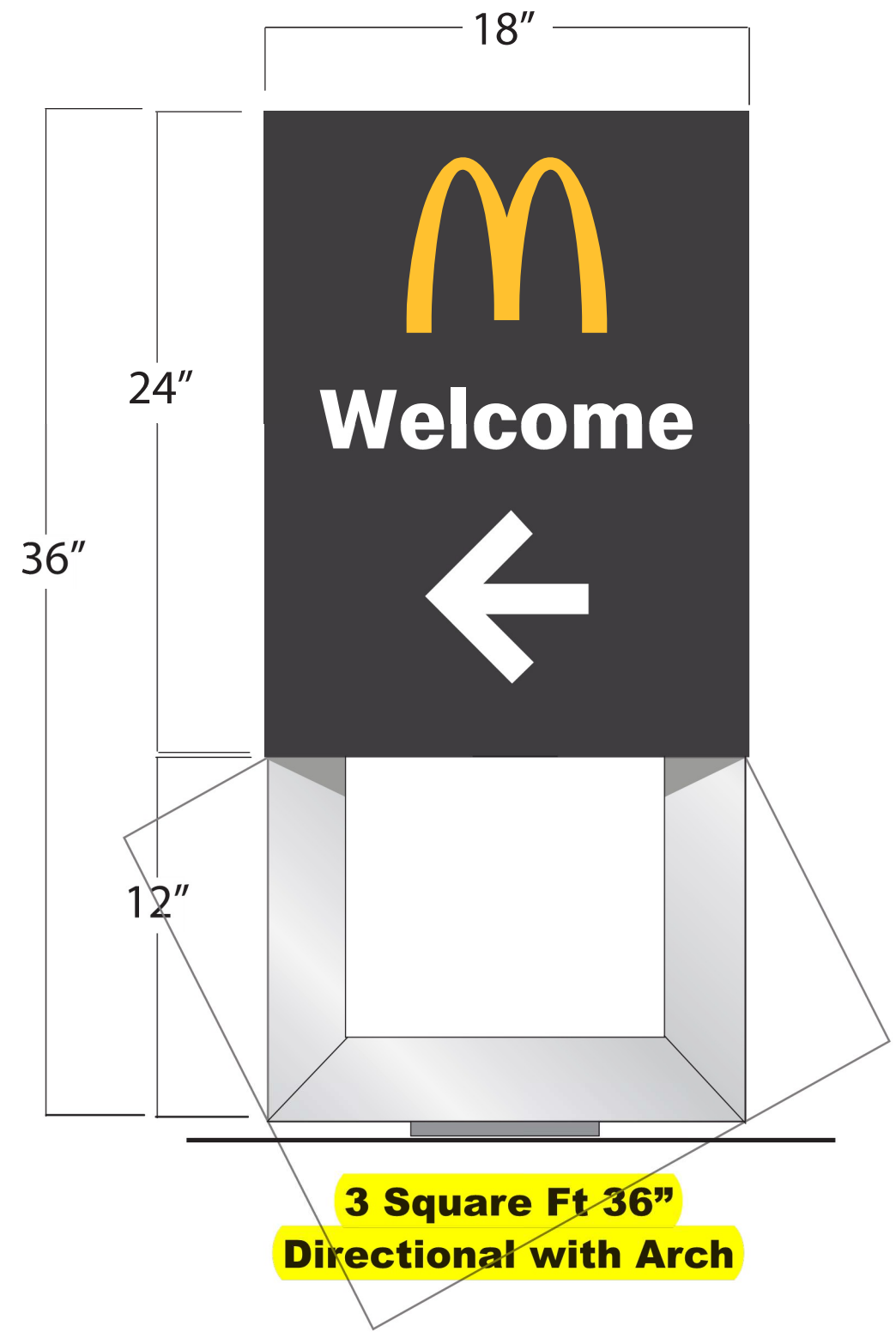


ODMB DESIGNED BY COATES



20 SQUARE FEET





SIGN DETAILS:

Routed aluminum Next Gen Charcoal faces and Next Gen Silver frame

LED illuminated letters, arrow, and optional Arch logo

White letters and arrow, PMS 123C Yellow Arch

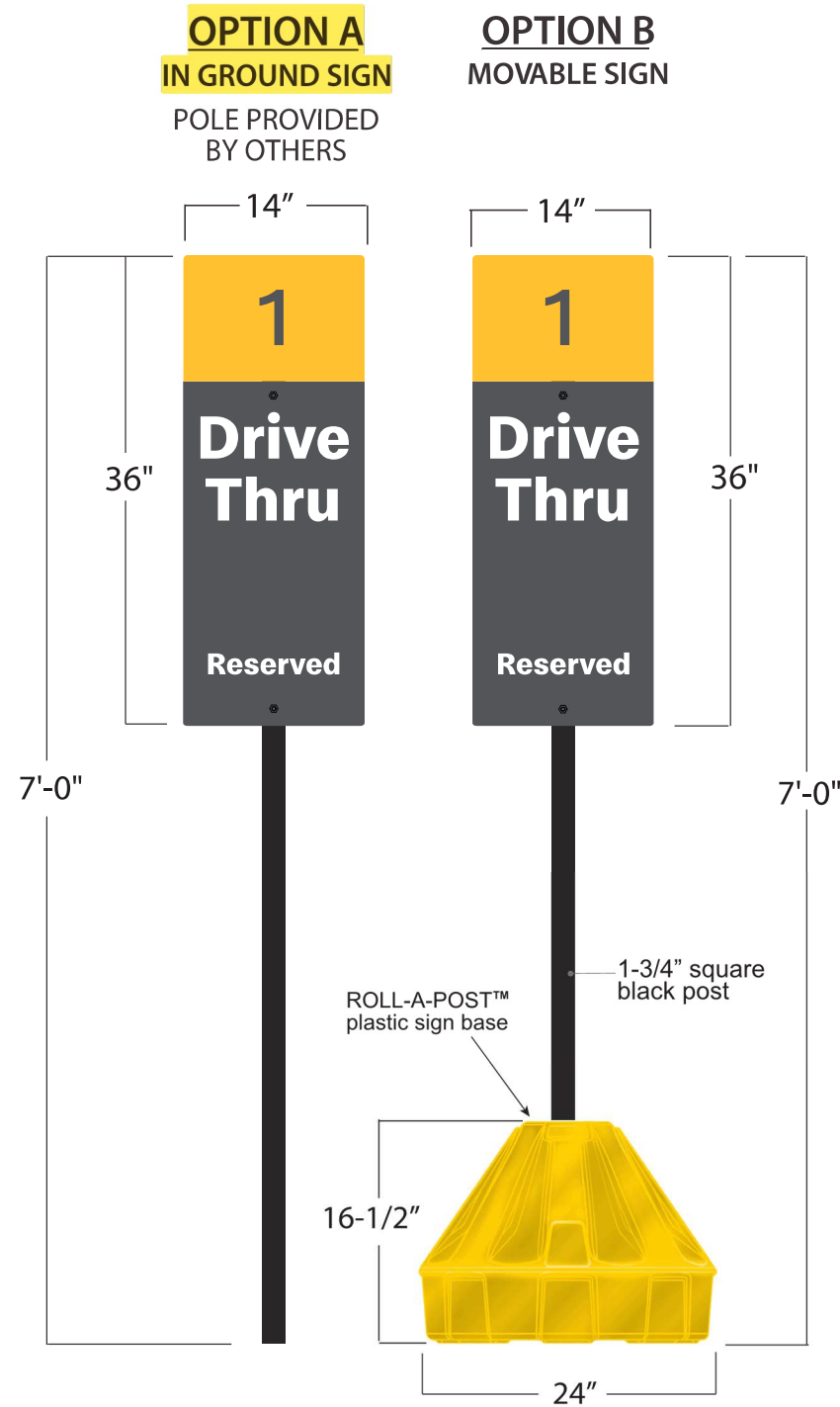


SIGN DETAILS:

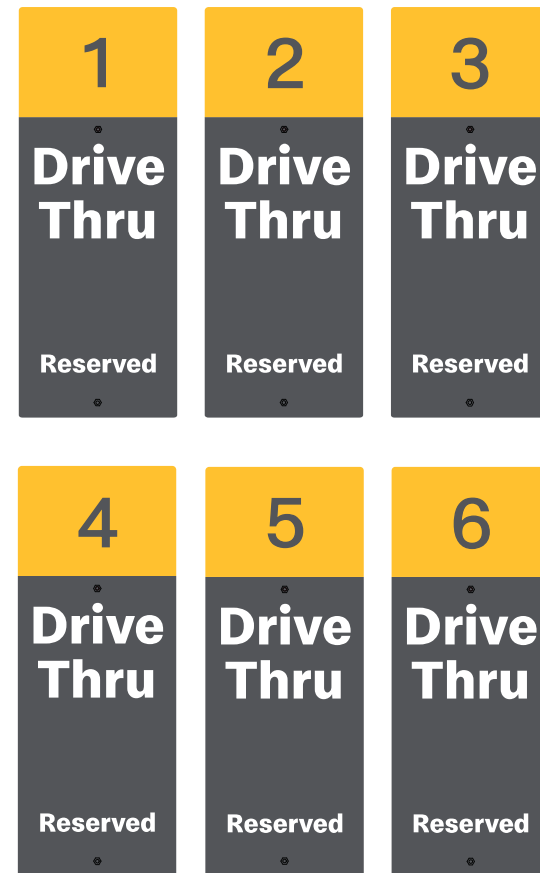
Routed aluminum Next Gen Charcoal faces and Next Gen Silver frame

LED illuminated letters, arrow, and optional Arch logo

White letters and arrow, PMS 123C Yellow Arch

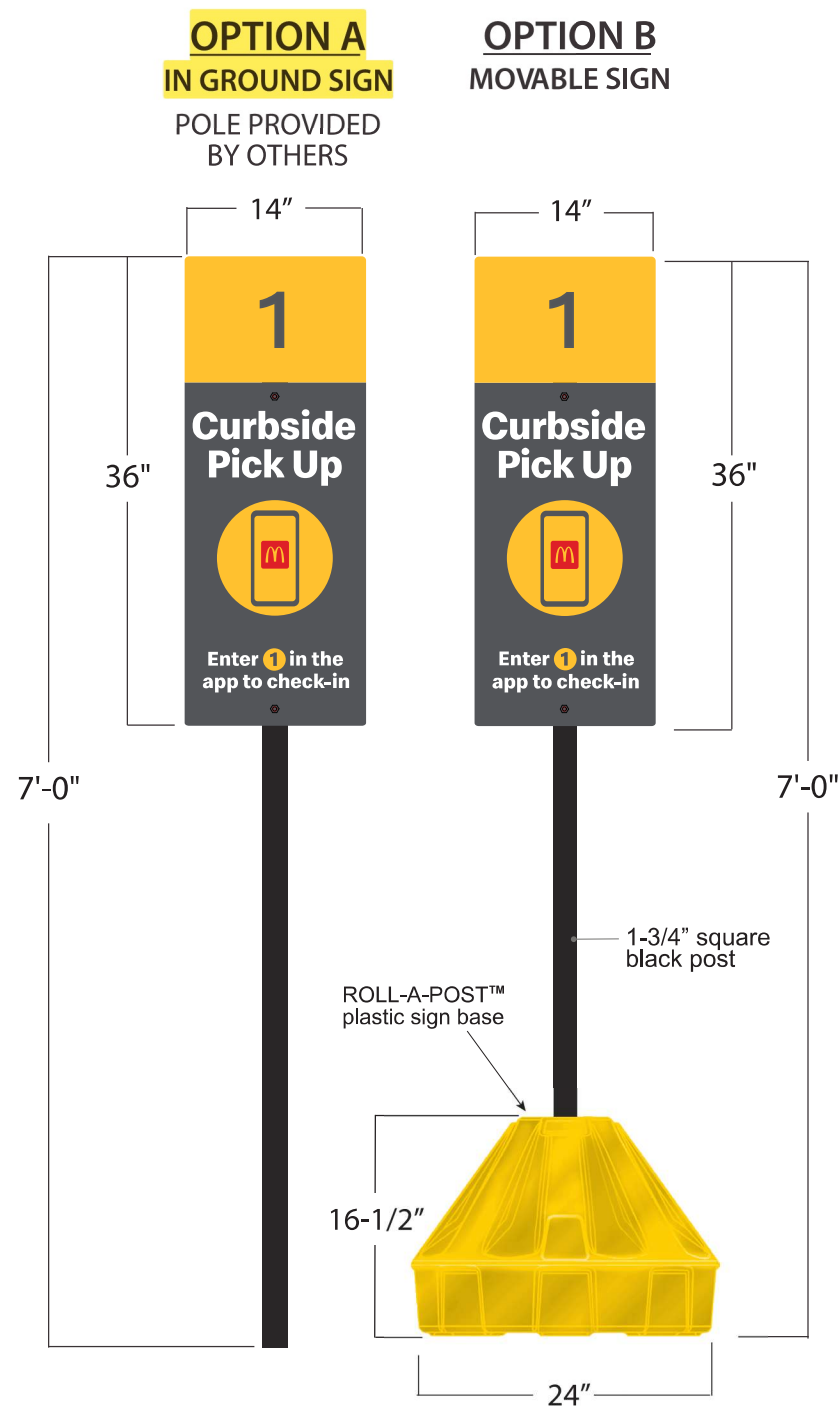


FACE OPTIONS



SIGN DETAILS:

- Non-illuminated ACM panel
- Next Gen Charcoal with matte finish screened copy and graphics
- Reflective PMS123C Yellow vinyl number square
- Shown with yellow ROLL-A-POST™ and black plastic post, sold separately

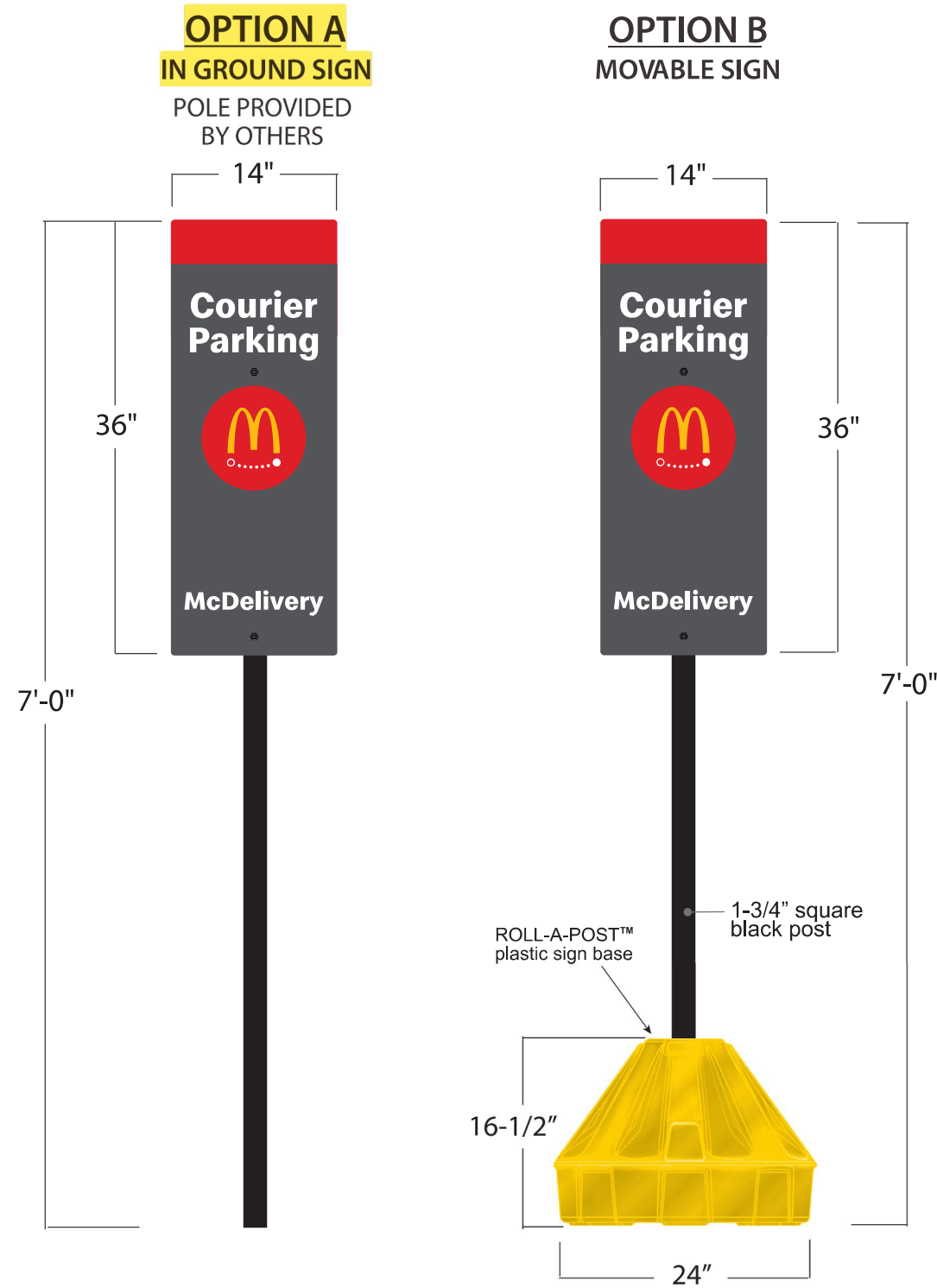


FACE OPTIONS



SIGN DETAILS:

- Non-illuminated ACM panel
- Next Gen Charcoal with matte finish screened copy and graphics
- Reflective PMS123C Yellow vinyl number square
- Shown with yellow ROLL-A-POST™ and black plastic post, sold separately



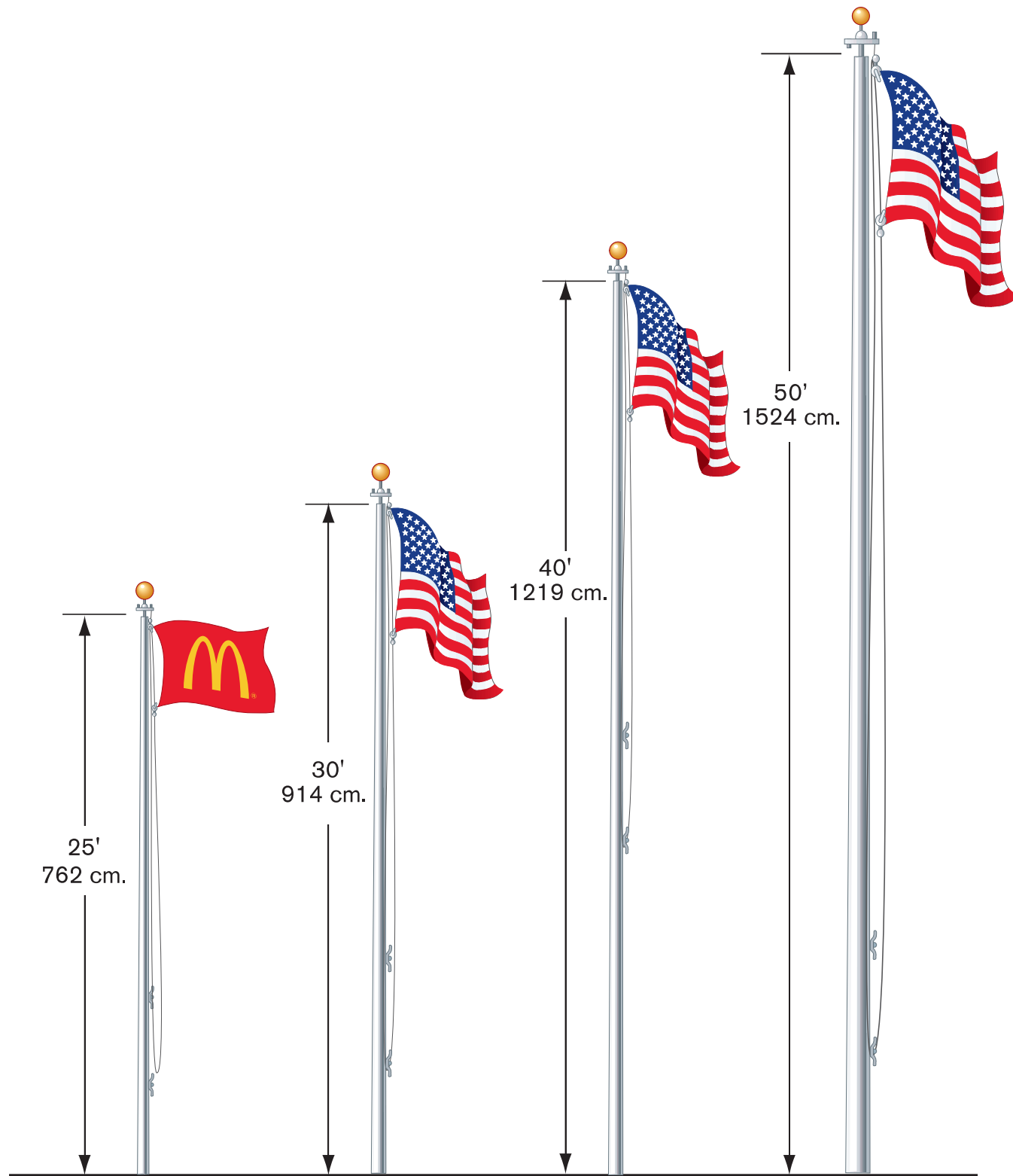
SIGN DETAILS:

Non-illuminated ACM panel

Next Gen Charcoal with matte finish screened copy and graphics

Shown with yellow ROLL-A-POST™ and black plastic post, sold separately

Flag Poles



Available Heights: 25' (762 cm.)
 30' (914 cm.)
 40' (1219 cm.)
 50' (1524 cm.)

Construction: Spun aluminum

Includes: Halyard, rope and cleat

Max. allowable sq. ft. of flag: (flag not included)
 25' - 40 sq. ft. 5' x 8' flag
 30' - 60 sq. ft. 6' x 10' flag
 40' - 96 sq. ft. 8' x 12' flag
 50' - 150 sq. ft. 10' x 15' flag

Other:

- 25', 30', 40' AND 50' flag poles-standard with ball top.



Project No: 69391

Address: 7030 Northfield Dr Brownsburg, IN 46112-9031

Description: McDonald's Rest #45201

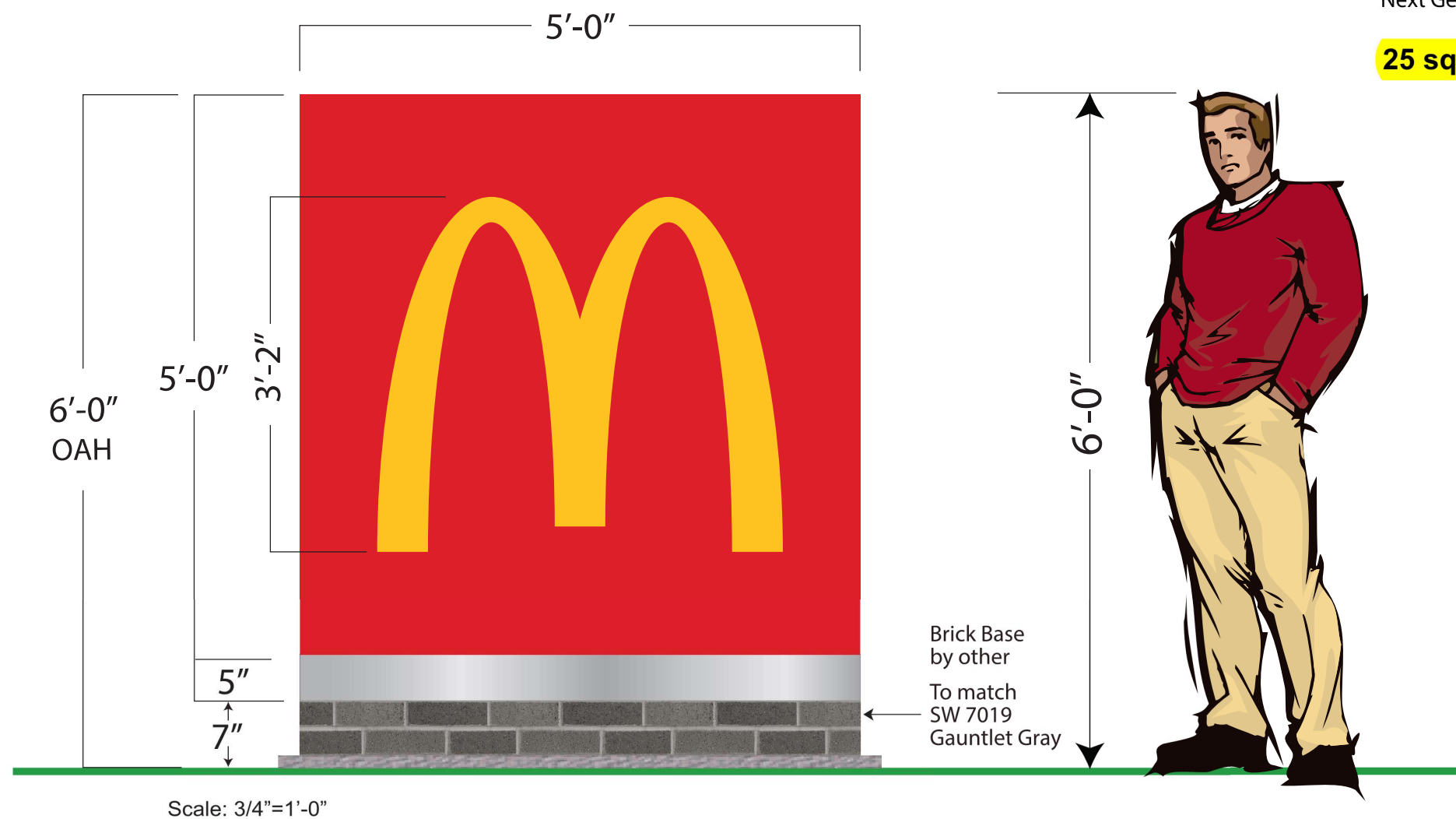
Prepared By: Kari Moyle

Date: 12/08/2025

PIF: 532583-0

Customer Signature:





SIGN DETAILS:

Routed aluminum faces with LED illuminated Arch logo

Next Gen Red cabinet and PMS 123C Yellow Arch

Next Gen Silver band

25 sq ft