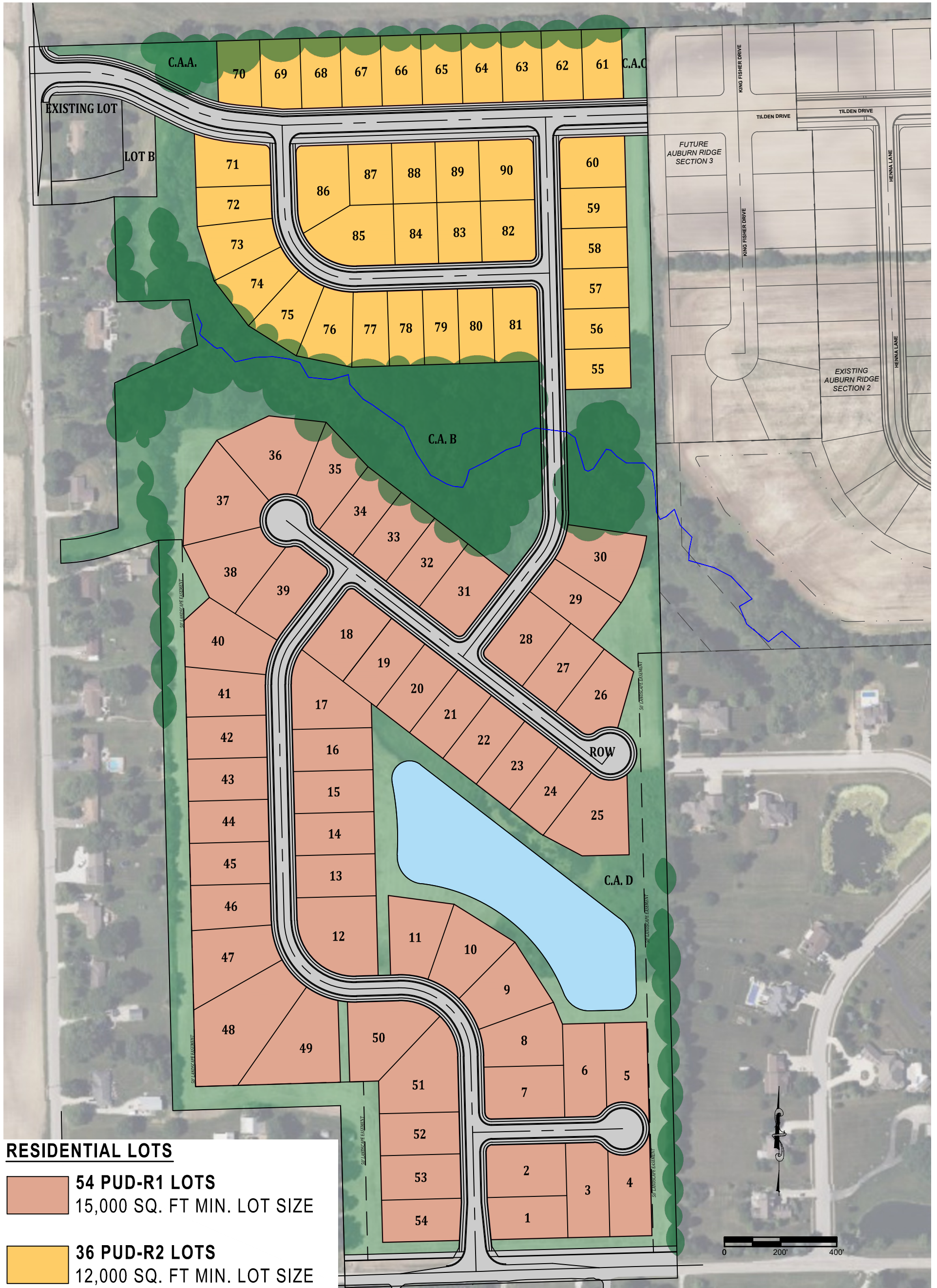


AUBURN RIDGE WEST (R1 & R2 LOT DESIGN)



RESIDENTIAL LOTS

54 PUD-R1 LOTS
15,000 SQ. FT. MIN. LOT SIZE

36 PUD-R2 LOTS
12,000 SQ. FT. MIN. LOT SIZE



Scale: 1" = 200'
 Drawn by: JJB/AGL
 Date: 01/19/2026
 Project No: 23248
 Drawing No: 23248_Pro_R2_REV.4

PROJECT SUMMARY

TOTAL AREA OF SECTION :	64.20 ACRES ±
NUMBER OF LOTS:	90
DENSITY:	1.40
TOTAL AREA OF LOTS:	33.88 ACRES ±
NUMBER OF COMMON AREAS:	4
TOTAL AREA OF COMMON AREAS:	19.94 ACRES ±
TOTAL LENGTH OF STREETS:	6388.44 L.F. OR 1.21 MILES
TOTAL AREA OF DEDICATED RIGHT-OF-WAY FOR STREETS:	10.38 ACRES ±

B:\dwg\p_2023\23248\Engineering\Cad\Pre\23248_Pro_R2_Rev.4.dwg, Jan 20, 2026, 1:42pm