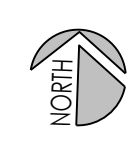
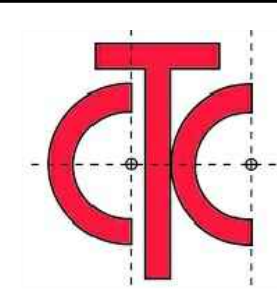


**BUILDING FLOOR PLAN**  
SCALE: 3/32" = 1'-0"



**PROPOSED NEW BUILDING**  
**SPEC BUILDING - 1**  
COMPASS & KEY INDUSTRIAL PARK  
XXX RACEWAY ROAD INDIANAPOLIS, INDIANA 46234



**COMMERCIAL TEAM CONSTRUCTION**  
1715 S. FRANKLIN ROAD  
INDIANAPOLIS, IN 46239  
317-782-8300  
www.commercialteamconstruction.com

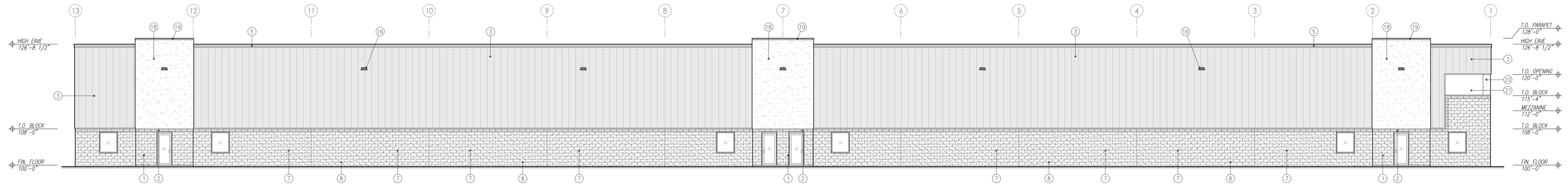
**KEELER-WEBB ASSOCIATES**  
*Consulting Engineers-Planners-Surveyors*  
486 GRADLE DRIVE  
CARMEL, INDIANA 46032  
317-574-0140  
www.keelerwebb.com



FOR REVIEW  
& COMMENT

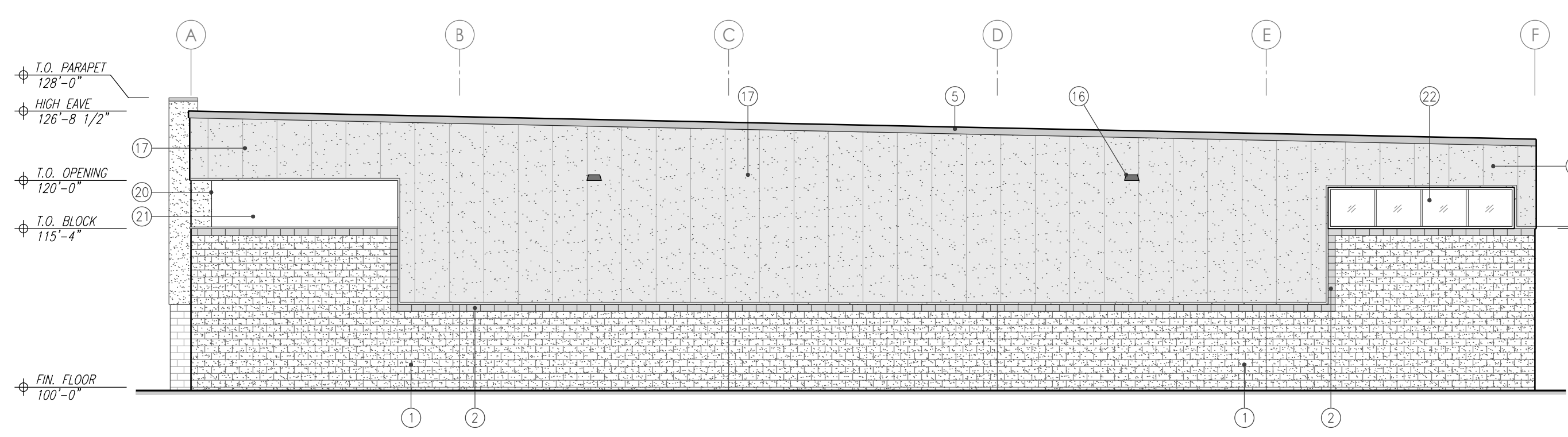
DATE	ISSUE	PROJ. No.
01-31-26	REVIEW & COMMENT	2601-019
02-06-26	REVIEW & APPROVAL	DRAWN BY: GSH
02-16-26	REVISED	CHECKED BY:
		SHEET No.

**A101**



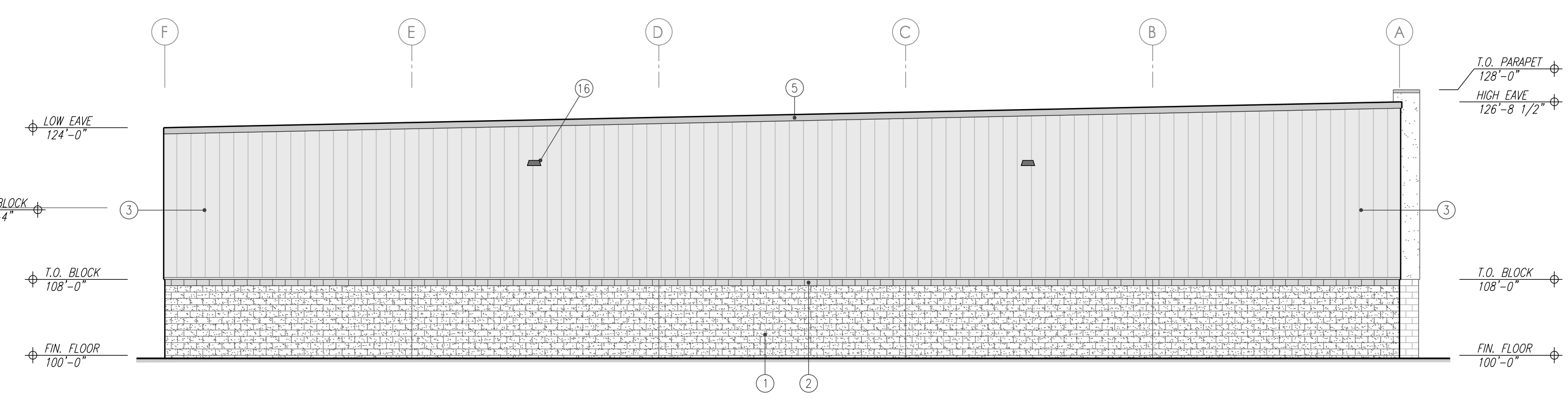
**SOUTH ELEVATION**  
SCALE: 3/32" = 1'-0"

SOUTH SIDE FACADE	
OVERALL AREA	8383 s.f.
ENTRIES & WINDOWS	210 s.f. 3%
MASONRY	2364 s.f. 28%
E.I.F.S.	183 s.f. 9%
OPEN AIR MEZZ.	38 s.f. 1%
SIDING & TRIM	4883 s.f. 59%



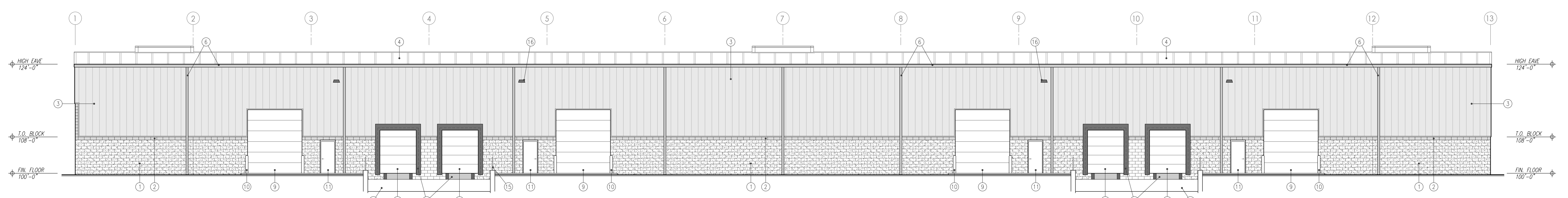
**EAST ELEVATION**  
SCALE: 3/32" = 1'-0"

EAST STREET FACADE	
OVERALL AREA	3288 s.f.
WINDOWS	12 s.f. 2%
MASONRY	1331 s.f. 40%
E.I.F.S.	4 s.f. 1%
OPEN AIR MEZZ.	26 s.f. 2%
SIDING & TRIM	1398 s.f. 55%



**WEST ELEVATION**  
SCALE: 3/32" = 1'-0"

WEST BACK FACADE	
OVERALL AREA	3288 s.f.
MASONRY	1040 s.f. 32%
SIDING & TRIM	2258 s.f. 68%



**NORTH ELEVATION**  
SCALE: 3/32" = 1'-0"

NORTH SIDE FACADE	
OVERALL AREA	1488 s.f.
ALL DOORS	135 s.f. 15%
MASONRY	1126 s.f. 23%
SIDING & TRIM	4632 s.f. 62%

**KEYED NOTES**

- |                                             |                                              |
|---------------------------------------------|----------------------------------------------|
| ① SPLIT-FACE MASONRY BLOCK                  | ⑫ 9' x 10' OVERHEAD DOCK DOOR                |
| ② 1-COURSE STANDARD MASONRY BLOCK (BAND)    | ⑬ DOCK LEVELER, BUMPERS & DOCK SEALS         |
| ③ RIBBED METAL SIDING BY BUILDING MFG.      | ⑭ 21" WIDE RECESSED CONCRETE TRUCK DOCK      |
| ④ STANDING-SEAM METAL ROOF BY BUILDING MFG. | ⑮ GUARDRAILS ON 12" CONCRETE RETAINING WALLS |
| ⑤ METAL COPING / TRIM BY BUILDING MFG.      | ⑯ WALL PACK LIGHT                            |
| ⑥ METAL GUTTER & DOWNSPOUT BY BUILDING MFG. | ⑰ INSULATED TEXTURED METAL PANEL             |
| ⑦ 4'-0" x 4'-8" WINDOW                      | ⑱ E.I.F.S. ENTRY BUMP-OUT                    |
| ⑧ 9'-4" x 7'-4" STOREFRONT ENTRY            | ⑲ METAL WALL COPING TO MATCH BUILDING TRIM   |
| ⑨ 12' x 14' OVERHEAD DOOR                   | ⑳ E.I.F.S. COLUMN WRAP                       |
| ⑩ PIPE BOLLARD ON EACH SIDE PF DOORS        | ㉑ OPEN AIR MEZZANINE                         |
| ⑪ 3' x 7' MANDOOR                           | ㉒ 18' x 4' WINDOW SYSTEM                     |

COLORS TO BE DETERMINED BY OWNER.

**PROPOSED NEW BUILDING**  
**SPEC BUILDING - 1**  
COMPASS & KEY INDUSTRIAL PARK  
XXX RACEWAY ROAD INDIANAPOLIS, INDIANA 46234

**COMMERCIAL TEAM CONSTRUCTION**  
1715 S. FRANKLIN ROAD  
INDIANAPOLIS, IN 46239  
317-782-8300  
www.commercialteamconstruction.com

**KEELER-WEBB ASSOCIATES**  
Consulting Engineers-Planners-Surveyors  
486 GRADLE DRIVE  
CARMEL, INDIANA 46032  
317-574-0140  
www.keelerwebb.com

FOR REVIEW & COMMENT

DATE	ISSUE	PROJ. No.
01-31-26	REVIEW & COMMENT	2601-019
02-06-26	REVIEW & APPROVAL	DRAWN BY: GSH
02-16-26	REVISED	CHECKED BY:
		SHEET No.

**A201**