

BATT - X



5221 N. Saddle Rock Drive
Phoenix, AZ 85018
Contact: Jeremy Johnson
Office: 602-840-2271 Cell: 817-291-4956
Email: jeremy@armoredcars.com
Quote #: JJ260312A



Issued To:
Brownsburg Police Department
31 N. Green St
Brownsburg, IN 46112
Phone: 317-714-3552
Email: pbullock@brownsburgpolice.org

Issued By:
Jeremy Johnson
Director, Law Enforcement Division
Phone: 817-291-4956
Email: jeremy@armoredcars.com

BATT - X

CHASSIS & MAINTENANCE SPECIFICATIONS

- Ford F-600 Super Duty Commercial Chassis
- 6.7L Turbo Diesel
- Wheelbase: 131"
- 22,000lbs GVW
- Heavy Duty Steel Rims
- 4-wheel drive (4X4)
- Automatic transmission with overdrive
- OEM in dash air conditioning, heating and defrost
- Mono-beam leaf spring suspension with rear stabilizer bar
- Am-Fm Stereo Radio with clock
- Sealed halogen headlamps
- Tilt wheel
- Heated and Power Mirrors

ARMOR LEVEL

- NIJ IV +.50 Cal Ball Ammo
- 46100 Mil Spec Steel
 - Cabin, Officer vertical panels
 - One Piece Side Walls from Headlights to Rear of BATT

(4) CABIN DOOR DESIGN

- 4 Door Design for Cabin Entry
- Double Rear Doors
- Front Cabin Doors offer 90° & 45° Lock Outs
- Rear Doors Lock out at 90°
- TAG Exclusive exterior Door Gap Protection at all doors



FLOOR

- Floor is armored with a blast mitigating floor

BATT - X

WINDOWS

- Bullet resistant glass-clad polycarbonate with-Low Spall Liner
 - 2 Piece windshield
 - Two (2) Front door windows
 - Two (2) Side Door Windows
 - (4) Horizontal windows in side walls
 - (2) Driver's Side
 - (2) Passenger Side
 - Two (2) Rear Door Windows
 - (1) Turret Lid View Window Above Gun Port

FIREWALL PROTECTION PACKAGE

- Complete firewall protection against shots or blast fragmentation



ENGINE BAY ARMOR PROTECTION PACKAGE

- Full Hood Armor Protection Package
- Traditional Opening Hood



FUEL TANK ARMOR

- Fuel tanks include locking armored door
- Armored vertical protection and skid plate on both tanks

TOW HOOKS

- (2) on front of BATT; (2) on rear of BATT
- Hooks installed on Roof

CUSTOM RUNNING BOARDS

- Heavy Duty Grated Running Boards

REAR PLATFORM/STEP/BUMPER

- Heavy Duty Rear Platform
- Includes additional rear bumper light; Allows for bumper illumination

BATT - X

GRAB HANDLES & REAR ROOF ACCESS

- Interior grab handles for stabilization inside cabin and rear officer's area
- Exterior steel grab handles for riding on running boards
 - Grab handles all around roof, on A Pillar, Located at all doors
- Rear mounted roof access steps

FRONT SEATS

- (2) Front seats
- Driver's seat is high back adjustable
- Passenger seat is high back adjustable
- Covered with Heavy Duty Nylon

REAR SEATING

- Bench seating with enclosed under seat storage
 - Seats are padded and have padded back rests
 - Cut Outs for back board slats

BUCKET REAR SEATS

- (2) Rearward facing flip up seats
- Heavy Nylon Covering

SEAT BELTS

- Seat Belts for all seats

GUN PORT PACKAGE

- Optic Ready Gun Ports Each Cabin Door
- Optic Ready Gun Port in Additional Passenger Side Door
- Optic Ready Gun Port in each Rear Door
- Optic Ready Gun Port Turret Lid
- (3) Optic Ready Gun Ports in Driver's Side Wall
- (3) Optic Ready Gun Ports in Passenger's Side Wall
- (13) Total Gun Ports – All Optic Ready

ROTATING ROOF HATCH

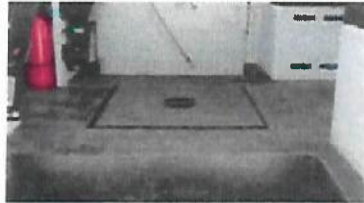
- 360 Degree Rotation with multiple locking positions
- Counterbalanced Roof Hatch Lid
- Heavy Duty Lid Locking System
- Includes view window as standard option



BATT - X

ROOF HATCH STEP

- Stored Flat in Floor when not in use to allow for easy entry and exit from rear and passenger side door.



REAR HVAC and REAR COOLING SYSTEM

- Large High Intensity Additional rear Air Conditioning and Heating unit mounted in rear officer's area for additional cooling and heating.
- 2 additional cooling fans

BASE INSULATION PACKAGE

- Dual Layer Ceramic-Based Insulated Coating

BATT V OFF ROAD UPGRADE PACKAGE & 365/80R20 QUAD TIRE/RIM PACKAGE UPGRADE

- Includes Conversion to Single Rear Wheel 20" Rim and Tires (365/80R20 Off Road Tires)

Suspension System

- Heavy Duty Off Road Shocks Designed for Armored Vehicles
 - Installed on Front and Rear of BATT; Increases stability and ruggedness
- Front Coils Upgraded
- Rear Suspension has Additional Leafs Installed for support
- Upgraded Bump Stops at all Wheel Positions (Front & Rear)
- Heavy Duty Sway Bars Added
- Upgraded Suspension to improve handling and maneuverability
 - Includes upgraded steering stabilizer, sway bars, shocks, springs



RUN FLAT TIRE PACKAGE

- Includes addition of 4 Hutchinson static mounted run flats
- Rated for Km/h for distance of 50 km, if tire is punctured (dependent on terrain)

BATT - X

CONTROL SYSTEM

- All Switches have Backlit Control Panel for ease of reading at night
- Easy to read and use by both driver and passenger
- All wiring performed to work in high heat, dusty, and sandy environments



EMERGENCY SYSTEM & ELECTRICAL

- LED Emergency Lights in Grill and on Rear of Unit (Red and Blue or Customer Choice)
- Multi Sound Horn/Siren with 200W Speaker



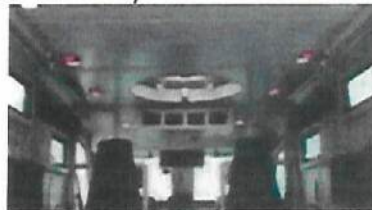
(2) REMOTE CONTROL SPOT LIGHTS

- (2) Remote Control LED Go Lights Installed on front corners of BATT
- (2) Pre-Cut Locations for Remote Control LED Go Lights on rear corners



INTERNAL LIGHTING

- Red/White Internal ceiling mounted lights
 - Allows for either White or Red or Both; Master switch in cabin; Also can control light from seat



BATT - X

BACK-UP CAMERA

- Color Back Up Camera with Color Monitor

EXHAUST FANS

- 2 Exhaust fans installed in rear compartment.

RADIO PREP PACKAGE

- TAG will either run wires to customer dictated locations or install customer supplied radio and antenna

PRE-CUT OPTIONS ON BATT – X2

- 2 Spotlights Rear of Unit
- Winch Cut-Out in Bumper
- Intercom System

PAINT

- Exterior
 - Black
- Interior
 - Gray Paint

ADDED EQUIPMENT

- Multi Angle Hydraulic Ram
- 2000W Power Inverter with 3 Electrical Outlets
 - 3 Outlets with 110V, USB installed in driver's side rear bench seat
- Kussmaul Auto Charging System with Auto Eject Plug
 - Non Shore Power
 - Used to charge truck batteries when not in use
- LRAD 100X Series Package with Wireless Kit and Magnetic Mounts
 - Includes Additional Battery and Tactical Kit

BATT - X

PRICING

BATT - X : **\$372,484.00**
Previous Customer Discount: **\$5,000.00**
BATT X Delivered: **\$368,484.00**

Payment Terms Accepted: Net 30

*Price includes Ford F600 6.7L Turbo Diesel Engine Chassis

*Price includes freight to Brownsburg Police Department

*Price does not include sales tax or licensing fees (The Armored Group does not collect sales tax or license vehicles)



March 12, 2026

Jeremy Johnson
Director, Law Enforcement Division
The Armored Group, LLC

_____, 2026
Authorized Signature
Brownsburg Police Department

ARMOR WARRANTY

Armor Basic 24 Months/Unlimited Miles



180 Industrial Drive
Burlington, WI 53105 USA

Phone: 800-558-5986
Fax: (262) 767-2529
Direct: +1 (262) 763-0147
www.ldvusa.com

**PRELIMINARY
SPECIFICATIONS FOR:**

**BROWNSBURG PD (IN)
COMMUNITY ENGAGEMENT VEHICLE**

LDV PROPOSAL # S36MCC-36520-26

DATE
~~MARCH 16, 2026~~
MARCH 27, 2026 REV1



180 Industrial Drive
 Burlington, WI 53105 USA
 Phone: 800-558-5986
 Fax: (262) 767-2529
 Direct: +1 (262) 763-0147
 www.ldvusa.com

TABLE OF CONTENTS

PRICING PAGE:3
 CHASSIS:4
 BODY:6
 PAINT / GRAPHICS:8
 DRIVER / PASSENGER CAB AREA:9
 WALLS, CEILING AND FLOOR:9
 GALLEY / LAVATORY:10
 SEATING:11
 CABINETS:11
 HVAC SYSTEM:12
 AC ELECTRICAL SYSTEM:12
 DC ELECTRICAL SYSTEM:14
 EMERGENCY LIGHTING / SIRENS:15
 AUDIO / VIDEO:15
 MAST AND MAST MOUNTED EQUIPMENT:16
 RADIOS:17
 COMPUTER NETWORK AND EQUIPMENT:18
 MISCELLANEOUS ELECTRONICS:18
 EXTERIOR STORAGE COMPARTMENTS:18
 MISCELLANEOUS OTHER:19



CUSTOM SPECIALTY VEHICLES

180 Industrial Drive
Burlington, WI 53105 USA

Phone: 800-558-5986
Fax: (262) 767-2529
Direct: +1 (262) 763-0147
www.ldvusa.com

PRICING PAGE:

(Sourcewell contract # 082025-LDV)

Total price per unit as specified, FOB Destination	\$657,754.00
Discount amount	-\$19,601.00
Sourcewell discounted price for 1 unit as specified	\$638,153.00
Delivery to: Brownsburg, IN	

Total price per unit	\$638,153.00
-----------------------------	---------------------

Delivery terms: Ask your Sales Representative.

Payment Terms: Net 30.

Quote is firm for 30 days from specification date.

Quoted price does not include any applicable FET, federal, state or local tax unless specified.

Please note that any applicable tariffs, duties, or import fees imposed after the issuance of this quotation will be the responsibility of the buyer. If such charges are incurred, they will be added to the final invoice.



CUSTOM SPECIALTY VEHICLES

180 Industrial Drive
Burlington, WI 53105 USA

Phone: 800-558-5986
Fax: (262) 763-0156
Direct: +1 (262) 763-0147
www.ldvusa.com

Item	Qty	
1.00		<p><u>CHASSIS/BODY DIMENSIONS:</u></p> <p>26' walk-in van</p> <ul style="list-style-type: none"> • Wheelbase of chassis: 250" • Overall length of apparatus: 425" • Overall apparatus width, rub rail to rub rail: 99" • Overall height of apparatus (loaded): 134" • Interior walkway height raw body: 83" • Interior walkway height finished: 81.5" • Interior walkway length: 312" • Interior raw body width: 96" • Interior finished body width: 87" <p>Final measurements are dependent on body builder, chassis components, axles, tires, frame, suspension, and roof-mounted equipment.</p>
2.00		<p><u>CHASSIS:</u></p>
2.01	1	<p>Freightliner MT-55 forward control chassis. 26,000-lb. GVWR with air ride rear suspension and hydraulic brakes.</p> <p><u>ENGINE:</u></p> <ul style="list-style-type: none"> • Cummins B6.7 260 HP@2400 RPM 2600 gov, 660 LB-FT @ 1600 RPM <p><u>ENGINE EQUIPMENT:</u></p> <ul style="list-style-type: none"> • 690 sq-in downflow radiator mounted in front • Frontal air intake • FARR ECO BC air cleaner with separator • Air cleaner mounted on rail • 12V 200 amp 28-SI pad mount alternator • (2) Alliance 1131 group 31 12V maintenance free 1900 CCA threaded stud batteries • Automatic over the road active regeneration and dash mounted single regeneration request/inhibit switch • Horizontal diesel particulate filter aftertreatment device • 10 gallon DEF tank RH frame mtd • Horizontal tailpipe, exit forward of rear tires • Full flow oil filter • Radiator mounted surge tank • Antifreeze to -34F, OAT (nitrite & silicate free) extended life coolant • Rubber coolant hoses • Phillips-Temro 1000 watt/115 volt block heater • Denso 12V starter with copper contacts <p><u>TRANSMISSION:</u></p> <ul style="list-style-type: none"> • Allison 2200 EVS automatic transmission with park pawl with PTO provision <p><u>TRANSMISSION EQUIPMENT:</u></p> <ul style="list-style-type: none"> • Water to oil transmission cooler • Transmission oil check and fill • Synthetic transmission fluid (TES-295 compliant)

3/27/2026



CUSTOM SPECIALTY VEHICLES

180 Industrial Drive
Burlington, WI 53105 USA

Phone: 800-558-5986
Fax: (262) 763-0156
Direct: +1 (262) 763-0147
www.ldvusa.com

Item Qty

		<p><u>FRONT AXLE AND EQUIPMENT:</u></p> <ul style="list-style-type: none"> • DA-F-10.0-3 10,000# FF1 69.0 KPI/3.50 drop single front axle • Bosch hydraulic pin-slide disc front brakes • Front disc brake rotors • Front oil seals • Synthetic front axle lube • TRW TAS-65 power steering • 2 quart power steering reservoir <p><u>FRONT SUSPENSION:</u></p> <ul style="list-style-type: none"> • 10,000# taperleaf front suspension • Maintenance free rubber bushings - front suspension • Sachs front shock absorbers <p><u>REAR AXLE AND EQUIPMENT:</u></p> <ul style="list-style-type: none"> • DA-RS-17.5-2 17,500# L-series single rear axle • 5.13 rear axle ratio • Iron rear axle carrier with standard axle housing • SPL70 Dana Spicer main driveline with half round yokes • Transmission and rear axle driveline guard • Synthetic 75W-90 rear axle lube • Bosch hydraulic pin-slide disc rear brakes • Rear disc brake rotors • Rear oil seals <p><u>REAR SUSPENSION:</u></p> <ul style="list-style-type: none"> • 18,000# Airliner rear suspension • Dual instant response rear suspension leveling valves • Rear swaybar • Gabriel rear shock absorbers <p><u>BRAKE SYSTEM:</u></p> <ul style="list-style-type: none"> • Hydraulic brake package • Wabco hydraulic 4S/4M ABS with ATC shutoff switch <p><u>FRAME:</u></p> <ul style="list-style-type: none"> • 5/16" X 2.81" X 9-1/8" steel frame (7.94MM X 231.8MM / .312" X 9.12") 80KSI <p><u>FUEL TANKS:</u></p> <ul style="list-style-type: none"> • 60 gal / 227 liter rectangular steel fuel tank - between rails <p><u>TIRES:</u></p> <ul style="list-style-type: none"> • Michelin XZE 255/70R22.5 16 ply radial front tires • Michelin X Multi D 255/70R22.5 16 ply radial rear tires <p><u>HUBS:</u></p> <ul style="list-style-type: none"> • Conmet iron rear axle hubs <p><u>WHEELS:</u></p> <ul style="list-style-type: none"> • 22.5x8.25 10-hub pilot 5-hand steel disc front wheels • 22.5x8.25 10-hub pilot 5-hand steel disc rear wheels <p><u>CAB EXTERIOR:</u></p> <ul style="list-style-type: none"> • Dual electric horns
--	--	---



CUSTOM SPECIALTY VEHICLES

180 Industrial Drive
Burlington, WI 53105 USA

Phone: 800-558-5986
Fax: (262) 763-0156
Direct: +1 (262) 763-0147
www.ldvusa.com

Item	Qty	
		<ul style="list-style-type: none"> • Daytime running lamps <p><u>CAB INTERIOR:</u></p> <ul style="list-style-type: none"> • Sanden compact air conditioner compressors • Auto self-reset circuit breakers and fuses • Tilt only steering column • 4-spoke 18" (450mm) charcoal steering wheel with switches <p><u>INSTRUMENTS & CONTROLS:</u></p> <ul style="list-style-type: none"> • Optiview 12.3" LCD • Digital speedometer in driver display configurable to MPH or KPH scale • Electric engine oil pressure gauge • Electric engine coolant temperature gauge • Digital voltage display integral with driver display • Fuel level indication w/low level warning in driver display • Engine hour meter, integral to message center LCD • 97 dB backup alarm • Electronic cruise control w/controls on steering wheel spokes <p>Note: Chassis specifications are from Freightliner Custom Chassis and are subject to change without notice.</p>
2.02		<p><u>CHASSIS WARRANTY:</u></p> <ul style="list-style-type: none"> • Three (3)-year/50,000 mile Freightliner MT-55 chassis warranty. • Three (3)-year/unlimited miles Cummins engine warranty. • Five (5)-year/unlimited miles Allison EVS transmission warranty.
2.03	1	Federal Signal Back-up alarm model 210331.
2.04	1	Block heater shall be wired to AC electrical distribution.
2.05	1	US DOT triangle reflector kit with three (3) triangles, for compliance with FMCSA regulations. Includes plastic storage case. Kit will be shipped loose in the vehicle.
2.06	1	Stainless steel wheel liners with braided stainless steel valve stem extenders.
3.00		<u>BODY:</u>
3.01	1	<ul style="list-style-type: none"> • Load space area shall be 83" high x 96" wide x 26' long all aluminum step van body. • Driver sedan door with slider window, door skin shall be chemically bonded to door frame structure reducing the amount of rivets required. Door shall have continuous stainless steel piano hinge • Passenger sedan door with slider window, door skin shall be chemically bonded to door frame structure reducing the amount of rivets required. Door shall have continuous stainless steel piano hinge • Sedan doors shall have a 0.125" aluminum tread plate step well for 18" skirt depth. • Sedan doors shall have black non-skid tape on all door entry sills. • Sedan doors shall have polished aluminum TriMark flush mounted locking hardware with self-aligning rotary latch and matching key locks. Outside door handles not to exceed 50" from ground. • Aluminum alloy double H wall beam, 6005-T5 alloy, 3" x 3" wide at the base, 1.5" wide at the top, 0.125 wall thickness. Studs feature machined wire pass-throughs, and raised adhesive control features on base.



CUSTOM SPECIALTY VEHICLES

180 Industrial Drive
Burlington, WI 53105 USA

Phone: 800-558-5986
Fax: (262) 763-0156
Direct: +1 (262) 763-0147
www.ldvusa.com

Item	Qty	
		<ul style="list-style-type: none"> • I-beams shall be chemically bonded to sidewalls eliminating the need for additional rivets. Buck-rivets will be used to fasten the top, bottom and rub rail. Use of two-sided tape is not acceptable. • Body shall have 0.125" strain-hardened aluminum alloy 5052-H36 side panels. The upper panels shall be free of rivets allowing for smooth graphics application. • Skirt supports, 1.5 x 1.5 x 0.125 angle to reinforce skirt edge and hold bottom edge in a straight line. 0.188 x 1.00" flat braces placed at 4' intervals and riveted to lower wall angle and floor to maintain sidewall skirt rigidity. • NFPA 1901 embossed 0.125" aluminum tread plate roof attached to 3" x 1 1/2" x 0.125" extruded aluminum roof bows on 16" centers. Bows are 2" skip welded every 12". Tread plate seams shall be continuous welded. Perimeter of roof shall be chemically sealed. • Lift-up molded fiberglass hood with chrome grill insert. Hood shall have integrated headlamps and turn signal indicators and dual assist gas charged lift shocks. The use of mechanical assist springs is not acceptable. • Extruded aluminum floor with interlocking planks, 1.88" high x various widths, 0.125" top surface. 6005-T5 alloy and temper. Heavy-duty thick-wall extruded planks fore and aft of all floor cutouts and every 5th plank in all other areas. Planks made of 6005-t5 alloy and temper, 0.250" thick top surface. • Bright polished front bumper. • Tinted safety plate glass windshield with driver and passenger sun visors. • Full width 12" deep heavy-duty aluminum rear bumper with center step, painted to match the body. • Integral cab air conditioning and heating system with dash controls. • Velvac heated remote control rear view mirrors with dash controls. Upper mirror has 62-sq.in. of flat surface and lower mirror has 30-sq.in. of convex surface. Mirror has a fold-away arm. • Driver seat shall be Seats Inc. Magnum 200 mechanical suspension seat on fixed pedestal. Seat shall be covered in black cloth and have arm rests, lumbar support, tilt back and 3-point seat belt. • Passenger seat shall be a black jump seat with 2-point seat belt. • Intermittent windshield wiper/washer with single heavy-duty windshield wiper motor. • Custom front wheel cutouts for tires. • Aluminum engine box cover with acoustical and thermal insulation. Black molded ABS composite engine box overlay. • Acoustical and thermal insulation with heat shield on exterior fire-wall. • Full length skirting. Skirt shall extend 18" down from the bottom of floor extrusions. • Dash shall be vacuum formed ABS composite with integrated control pod located left of dash. • All clearance and side marker lights to be LED. • Standard structural warranty of 5 years or 50,000 miles and standard component warranty of 12 months or 12,000 miles. • The vehicle shall be fully sanded on all exterior surfaces with no more than 150 grit to assure removal of imperfections in metal surface. All aluminum shall be chemically etched and primed prior to painting. Base body color shall be oven baked and painted to commercial truck standards.



CUSTOM SPECIALTY VEHICLES

180 Industrial Drive
Burlington, WI 53105 USA

Phone: 800-558-5986
Fax: (262) 763-0156
Direct: +1 (262) 763-0147
www.ldvusa.com

Item	Qty	
		Note: Specifications are from body manufacturer and are subject to change without notice.
3.02	1	32" wide x 82" high 0.125" aluminum sedan door with 21.5" wide x 25.5" high fixed window. Door shall have continuous stainless steel piano hinge, two (2) nylon door straps and an aluminum drip rail. NOTE: Interior window covering will be a mini blind.
3.03	3	Exterior heavy-duty knurled aluminum grab handle with chrome plated stanchions, installed at entry door.
3.04	1	Interior heavy-duty knurled aluminum grab handle with chrome plated stanchions, installed at entry door.
3.05	3	Automatic LED courtesy light at entry door.
3.06	1	Courtesy light defeat switch.
3.07	1	Lippert Treadlite 24" wide - single - automatic electric steel entry step mounted under entry door. Product features: • Automatic LED ground light • Step remains extended unless ignition is turned on. NOTE: Step light will be tied into courtesy light defeat.
3.08	1	Lippert Treadlite 30" wide - single - automatic electric steel entry step mounted under entry door. Product features: • Automatic LED ground light • Step remains extended unless ignition is turned on. NOTE: Step light will be tied into courtesy light defeat.
3.09	1	Maxxima LED Round combination stop/tail, turn and reverse lights.
3.10	1	Cast Products LP0004-1-B aluminum license plate mounting frame with LED light.
3.11	1	Entire underside shall be undercoated. Includes floor extrusions, step wells and aluminum compartments.
3.12	1	LDV rear mud flaps. Includes anti-sail brackets when required.
4.00		<u>PAINT / GRAPHICS:</u>
4.01		Body base color shall be white.
5.00		<u>INDEPENDENCE ONYX INTERIOR:</u> • Wall Covering Front/Rear rooms: Chrome carpet • Wall Covering Middle room: #66 Silver Smooth FRP • Bulkheads - #66 Silver Smooth FRP • Control console cabinet – Black laminate • Ceiling: o Center (ductwork) #HAT2-C0111 Charcoal Gray Texture Powder Coated o Outside Silver Mist carpet o Trim: #HAT2-C0111 Charcoal Gray Texture Powder Coated • Floor Covering: #150 Onyx PVC Flooring • Office Chairs: Black

Item	Qty	
		<ul style="list-style-type: none"> • Cabinets: #HAT2-C0111 Charcoal Gray Texture Powder Coated Aluminum with anodized trim. <ul style="list-style-type: none"> ○ Interior door panel(s): #HAT2-C0111 Charcoal Gray Texture Powder Coated • Vinyl/fabric coverings: <ul style="list-style-type: none"> ○ Seat bottom to be stock Black Vinyl. ○ Seat back to be Ultraleather Dwell 570-5635 Basalt back • Counters and Tables: #4879-38 Steel Mesh Laminate with GRAY T-molding <p>Note: Manufacturer reserves the right to substitute equivalent materials.</p>
6.00		<u>DRIVER / PASSENGER CAB AREA:</u>
6.01	1	<p>Walk-in van custom cab area finishing.</p> <ul style="list-style-type: none"> • Cover cab doors with aluminum panels powder coated. • Heavy-duty rubber grab handle on each door. • Panels covered with vinyl or fabric above driver and passenger doors. • Vehicle height sign on dash. • Insulated black rubber mat in driver and passenger toe plate area. • Insulate walls in kick plate area and install black carpeted panels. • Vehicle shall have a Final Stage Vehicle Certification and Altered Vehicle Certification as required by Federal Motor Vehicle Safety Standards (FMVSS) 49 CFR Part 567.5 and 567.7 • Payload sticker in cab area with vehicle axle load ratings and available axle payload as built.
6.02	1	Work area on passenger side covered with laminate to match rear countertops and trimmed with vinyl T-molding.
6.03	1	Custom fabricated console to house electrical distribution components and control panels shall be located in the overhead console above the windshield. The entire console shall be constructed of 3/4" birch. The face shall be finished with laminate the bottom shall be covered with vinyl.
6.04	1	Red/Clear LED dome light with 3-position switch, red/off/white.
6.05	1	Color back up camera system with 7" LCD monitor and day/night camera.
6.06	1	AM/FM stereo with Bluetooth and one (1) pair of 6" x 9" speakers.
7.00		<u>WALLS, CEILING AND FLOOR:</u>
7.01		Insulate walls with a minimum of 2-1/2" of fiberglass insulation. Cover interior body side posts with 1/2" plywood sub wall.
7.02		<p>Cover sub wall with smooth finish Kemlite 0.075" fiberglass reinforced plastic (FRP) lining. Wall covering shall be a continuous piece front to back, no seams acceptable.</p> <p>NOTE: Galley</p>
7.03		<p>Cover sub wall with ribbed loop pile carpet.</p> <p>NOTE: Front/Rear rooms</p>
7.04		<p>Insulate ceiling with a minimum of 2-1/2" of fiberglass.</p> <ul style="list-style-type: none"> • Cover interior roof beams with 1/2" plywood. • Modular panel design allows for manageable future additions and repairs. • Plywood Panels covered in acoustical fabric.



CUSTOM SPECIALTY VEHICLES

180 Industrial Drive
Burlington, WI 53105 USA

Phone: 800-558-5986
Fax: (262) 763-0156
Direct: +1 (262) 763-0147
www.ldvusa.com

Item	Qty	
7.05		Floor underlayment to be 5/8" exterior grade tongue and groove structural plywood, 6 ply, face veneer plugged and sanded.
7.06		Lonseal Loncoin II Flecks non-skid commercial grade PVC flooring. The flooring shall be continuous, one piece full length, full width, no seams.
7.07		Vinyl cove molding (mop board) at base of wall, 2-1/2" high. Installed where required.
7.08	1	Flush pocket door installed on heavy-duty aluminum c-channel track with two (2) three-wheel roller trucks. Pocket door shall have recessed handle and magnetic closure to keep the door open/closed.
7.09		All bulkheads shall be covered with Kemlite 0.075" FRP. Trim exposed edges of bulkheads with rounded anodized aluminum trim where applicable.
7.10	2	Cover load space door with powder coated aluminum panel with heavy-duty rubber grab handle. NOTE: Interior window covering will be a mini blind.
7.11	1	Street side mounted 30" wide x 19" high flush mount deep-tint horizontal sliding egress window with screen. NOTE: Interior window covering will be a mini blind.
8.00		<u>GALLEY / LAVATORY:</u>
8.01	1	Microwave oven, minimum 1.0 cu. ft., 1000-watt. NOTE: Current model is Panasonic NN-SU656B 1.3 Cu. Ft. Black Countertop Microwave Oven
8.02	1	Keurig Coffee maker.
8.03	1	Norcold DC751BB DC powered refrigerator with the following features: • 2.7 cu. ft. capacity. • Freezer shelf for ice cube tray. • Door bin holds 2-liter containers. • Integrated door latch. • 12/24 Vdc
8.04	1	Pressurized Lavatory Water System. Includes: • Thetford Foot Pedal Flush model 31837 (or current model) low-profile toilet in lavatory. • Fresh water/waste tank level monitor in lavatory. • 10" round stainless steel lavatory sink with chrome plated sink hardware. • One (1) chrome plated paper towel holder and one (1) chrome plated toilet paper holder in lavatory. • Aqua Jet model #5503-AV15-B636 (or current model) 5.3 GPM water pump with accumulator tank. • One (1) 25 gallon fresh water supply and one (1) 30 gallon waste tank. • Plumbing pressure pipes shall be PEX tubing. • Underbody fresh water and grey water tanks are to be heated and all plumbing insulated and wrapped with heat tape. • Sewage hose and dump valve shall be provided for holding tank.



CUSTOM SPECIALTY VEHICLES

180 Industrial Drive
Burlington, WI 53105 USA

Phone: 800-558-5986
Fax: (262) 763-0156
Direct: +1 (262) 763-0147
www.ldvusa.com

Item	Qty	
		• Winterizing valve mounted in line on the input side of the water pump. Valve allows antifreeze to be pumped throughout the system to winterize plumbing.
8.05	1	2.5 gallon electric water heater.
8.06	1	Permanently mounted holding tank rinsing system.
8.07	1	Wastebasket with hold-down bracket.
8.08	1	Bobrick B-165 18" x 24" one-piece channel frame mirror with bright polished finish.
8.09	1	Bobrick B-4112 satin-finish stainless steel soap dispenser.
9.00		<u>SEATING:</u>
9.01	4	HON Volt pneumatic task chair with five-star caster spider base, adjustable height and no armrests.
9.02	1	Install passenger jump seat with 2-point seat belt.
9.03		Fabricate and install fixed bench seating with removable cushions as shown on drawing. Bench seat cushions shall be covered in heavy-duty vinyl.
9.04		Fabricate and install flip-down bench seating as shown on drawing. Bench seat cushions shall be covered in heavy-duty vinyl. Bottom seat cushion will be installed on Zico Quic-Seat® fold down spring loaded seat brackets.
9.05		<u>BENCH SEAT REQUIREMENTS:</u> <ul style="list-style-type: none"> • Foam for seat backs and bottoms shall be firm density. • All bench seating material must meet Federal Motor Vehicle Safety Standards part 571.302 Flammability of Interior Materials. • Material corners shall be squared or angled to fit precise cut of foam. • Foam shall be bonded to plywood backer with industrial grade adhesive. • Attachment of fabric/vinyl to backer shall utilize industrial grade upholstery staples.
10.00		<u>CABINETS:</u>
10.01		Custom fabricated aluminum cabinets located as shown on drawing. Cabinet specifications: <ul style="list-style-type: none"> • Base cabinets constructed of 0.080" powder coated aluminum with anodized aluminum frames. • Base cabinet doors are double shell, formed from a single sheet of 0.080" aluminum, with a 0.040" aluminum door back attached. • Overhead cabinets constructed of 0.064" powder coated aluminum with anodized aluminum frames. • Overhead cabinet doors are double shell, formed from a single sheet of 0.064" aluminum, with a 0.040" aluminum door back attached. • Overhead cabinet doors swing up with gas spring lift supports.
10.02	6	Dry erase writing surface on overhead cabinet door.
10.03	5	LED light with on/off switch, mounted under overhead cabinet. NOTE: One (1) per workstation One (1) galley
10.04	2	Magnetic dry erase board framed in aluminum. Includes aluminum clip frame for easy board replacement, sized as required.
10.05		Countertops shall be covered in 0.040" Wilsonart laminate. All exposed edges shall be covered with heavy duty flexible PVC T-molding.



CUSTOM SPECIALTY VEHICLES

180 Industrial Drive
Burlington, WI 53105 USA

Phone: 800-558-5986
Fax: (262) 763-0156
Direct: +1 (262) 763-0147
www.ldvusa.com

Item	Qty	
10.06		Conference table covered in 0.040" Wilsonart laminate. All exposed edges shall be covered with heavy duty flexible PVC T-molding.
10.07	1	Powder coated 0.125" aluminum conference table base.
11.00		<u>HVAC SYSTEM:</u>
11.01	4	Low profile rooftop air conditioner with wall mounted thermostat. Includes: <ul style="list-style-type: none"> • 13,500 nominal Btu/hr air conditioner with condensate pump. • Ceiling assembly with 6,000 Btu/hr heat strip • Wall mounted thermostat
11.02	3	Broan model 174 wall mount 5,120 Btu/hr electric heater.
11.03	1	5,100-12,000 Btu/hr direct discharge, 12Vdc powered, diesel-fired furnace with individual thermostat control. Exhaust shall be routed to the street side.
12.00		<u>AC ELECTRICAL SYSTEM:</u>
12.01	1	Power Tech 20-kW 120/240Vac liquid-cooled diesel generator with air bag mounts installed in a custom fabricated compartment. Generator features: <ul style="list-style-type: none"> • Tier 4F Emissions • USTC Certified Manufacturer • Warranty: 2 years from date of purchase, or 3000 hours whichever comes first, or 36 months from the date of manufacture. • Four point air bag mounting system • Four-cycle water cooled diesel engine • Radiator cooled, direct mounted • High-coolant temp and low oil pressure shutdown sensors • Spin-on fuel and oil filter • Single side service • Typical Gallon Per Hour fuel consumption: 25% load = 0.45, 50% load = 0.90, 100% load = 1.80 <p>Compartment shall be constructed to the following specifications:</p> <ul style="list-style-type: none"> • 0.187" aluminum with all welded seams. • 2" deep 0.125" aluminum box pan doors and 0.125" aluminum frames. • Door frames riveted to the body and welded to the compartments. • Stainless steel door hinges attached with stainless steel machine screws. • Flush mounted door handles with slam latches. • 0.100" aluminum treadplate panels on interior door surfaces. • Gas charged lift/support cylinders to hold doors open at 90°. • Industrial grade neoprene gasket door seals. <p>NOTE: Generator exhaust shall be routed to the street side of the vehicle.</p>
12.02	1	ACData surge suppressor for protection of entire AC power system. Product features: <ul style="list-style-type: none"> • UL listed: UL1449 3rd Edition • LED visual verification of status



CUSTOM SPECIALTY VEHICLES

180 Industrial Drive
Burlington, WI 53105 USA

Phone: 800-558-5986
Fax: (262) 763-0156
Direct: +1 (262) 763-0147
www.ldvusa.com

Item	Qty	
12.03	1	100A-120/240Vac electrical control panel with the following features: <ul style="list-style-type: none"> • Generator and shore power main breaker • Twelve (12) UL listed magnetic/hydraulic branch circuit breakers with LED indicators, • Digital meters: voltage, frequency and amperage • Generator stop/start switch, and hour meter • 3-position rotary transfer switch
12.04	1	Kussmaul Auto Eject 20, 20A-120Vac shore power inlet with 25-ft. 20A-120Vac shore power cord. #091-20WP-120RD.
12.05	1	Marinco 50A-125/250Vac shore power package including: <ul style="list-style-type: none"> • Waterproof shore power inlet with cap • 50-ft. 50A-125/250Vac shore power cord • 6-ft. 50A-125/250Vac pigtail
12.06	2	20A-125Vac duplex receptacle. Receptacle is not dedicated to any installed equipment. NOTE: One (1) Comms closet One (1) Electronics rack
12.07	7	20A-125Vac duplex receptacle with dual USB charging ports [one (1) Type A and one (1) Type C]. Receptacle is not dedicated to any installed equipment. NOTE: One (1) Per workstation [qty.4] Two (2) Conference table base One (1) Front passenger workstation
12.08	1	20A-125Vac GFCI duplex receptacle. These receptacles are not dedicated to any installed equipment. NOTE: One (1) Galley
12.09	1	30A-120 Vac receptacle in electronics rack for future installed UPS.
12.10	2	20A-125Vac exterior GFCI duplex receptacle. NOTE: Receptacle will be installed with a weatherproof cover.
12.11		Wire chase wire management raceway system located as shown on drawing. Product features: <ul style="list-style-type: none"> • Satin anodized finish. The finish resists rust, corrosion and fading. Material extruded from 6063-T5 aluminum alloy. • Removable dual cover. Makes wiring easy and accessible and provides maximum flexibility for adding or relocating outlets and circuits. The cover retention is 45 lbs. straight pull for one minute. • UL Listed multioutlet assemblies. File E68073 Guide PVGT, Fittings: File E121188 Guide RJPR. Meets Article 380 of NEC and meets Section 12-3032 of CEC. • UL and UL Listed component raceways. File E73943 Guide RJBT, Fittings: File E74343 Guide RJPR. Meets Article 386 of NEC and meets Section 12-600 of CEC. • UL5 and ADA compliant. Raceway and fittings meet UL5 specifications and can be installed in conformance with ADA requirements
12.12	1	Will-Burt Night Scan NS2.3-600WHL (or current model) 120Vac light tower. Includes:



CUSTOM SPECIALTY VEHICLES

180 Industrial Drive
Burlington, WI 53105 USA

Phone: 800-558-5986
Fax: (262) 763-0156
Direct: +1 (262) 763-0147
www.ldvusa.com

Item	Qty	
		<ul style="list-style-type: none"> • Four (4) Pioneer x 150 watt LED Spot/Flood light (PCP2ASF) • Hand held (wired) remote control (SHIP LOOSE) • 50ft control cable • Additional roof support structure, as required.
12.13		<p><u>AC WIRING REQUIREMENTS:</u></p> <ul style="list-style-type: none"> • All AC main wiring shall be stranded THHN wire and run in non-metallic liquid tight conduit. • All AC branch circuit wiring shall be stranded THHN wire (AWG 12 minimum) and run in non-metallic liquid tight and ENT conduit. • All electrical circuits and appliances shall conform to applicable national electrical codes.
13.00		<p><u>DC ELECTRICAL SYSTEM:</u></p>
13.01		<ul style="list-style-type: none"> • Four (4) Lead acid deep-cycle 6Vdc batteries. Batteries shall be installed underbody in slide out weather resistant aluminum compartment. Compartment shall have box pan door with slam latch, flush mount handle, key lock and Kwikkee heavy-duty slide assembly. Two (2) batteries will be separated for auxiliary equipment (2.2 hours of capacity @ 75-amp discharge rate) and two (2) batteries will be for communications equipment (2.2 hours of capacity @ 75-amp discharge rate). Battery data assumes a usable voltage range of 13.6 to 10.5 volts. • Two (2) electronic converter/chargers, 60 amp minimum output each. Converter/charger features: <ul style="list-style-type: none"> • Charges three banks of batteries at the same time. • UL listed for safety. • Manual reset circuit breaker. • Reverse battery protection. • Electronic current limiting. • High voltage protection. • One (1) master disconnect switch to control the auxiliary battery systems. • 12Vdc control panel with seven (7) UL listed magnetic/hydraulic circuit breakers with red LED indicators and 12Vdc digital voltmeter. • 12Vdc auxiliary panels with UL listed magnetic/hydraulic circuit breakers as required. • 12Vdc auxiliary digital voltmeter to monitor the communications battery system.
13.02	26	Light, Orion 6" LED, neutral white with polished bezel and voltage regulation.
13.03	6	Whelen M9LZC Gradient LED Scene Light with chrome flange.
13.04		<p><u>12VDC WIRING REQUIREMENTS:</u></p> <ul style="list-style-type: none"> • 2-gauge minimum copper stranded battery cable shall be used for 12Vdc main supply lines. All cable runs shall be full length, no splices. All cable terminals shall be staked and soldered. All cable shall be enclosed in convoluted polyethylene tubing and the ends of the cable shall be sealed with color-coded shrink-wrap identifying the function of the cable. • All added electrical branch circuits shall be protected from over-current by resettable circuit breakers appropriately rated for the load. Only circuit breakers shall be used in the installation of added electrical branch circuit wiring (plug type fuses are unacceptable). • Circuit breaker functions shall be identified by engraved or printed labels. • All added wiring for load runs of AWG 10, 12, 14, and 18, shall conform to MIL-W-16878/2 and/or UL1007/1569" • All added wiring for load runs of AWG 8, shall conform to MIL-W-16878/3 and/or UL1028



CUSTOM SPECIALTY VEHICLES

180 Industrial Drive
Burlington, WI 53105 USA

Phone: 800-558-5986
Fax: (262) 763-0156
Direct: +1 (262) 763-0147
www.ldvusa.com

Item	Qty	
		<ul style="list-style-type: none"> • Wire terminals for added circuits must conform to MIL-T-7928. Terminals shall be insulated, insulation grip, TYPE II, CLASS 2 and shall be crimped with tooling recommended by the terminal manufacturer. • All wiring shall be numbered or lettered on 6" centers minimum. • Wiring shall be protected from chafing and abrasion with convoluted polyethylene tubing (wire loom) as required. • Where wire passes through sheet metal, bulkheads and structural supports, plastic grommets shall be used to protect both wiring and wire looms. • All wire bundles shall be tied with trimmed nylon ties. • Extreme care shall be exercised to provide for easy serviceability of the system in future years. • Extreme care must be taken in the installation to avoid the engine manifold, engine exhaust, and muffler, which could expose the wiring to severe overheating during long periods of operation. Proper insulation and heat deflection panels must be installed in such areas. • A high-current 12Vdc system wiring schematic shall be provided. • These are the minimum acceptable 12Vdc wiring requirements.
14.00		<u>EMERGENCY LIGHTING / SIRENS:</u>
14.01	1	Whelen 295SLSA6 siren with 9 low current lighting control switches. California Title 13 compliant. NOTE: Slide Bar Positions Control: 1. Rear (Upper and Lower) 2. Rear (Upper and Lower), All Upper, Front Wall or "Light bar" 3. All
14.02	1	Whelen SA315P high performance speaker, with bracket.
14.03	2	Whelen T-Series™ Linear Super-LED® Red TSSOR with clear outer lens & chrome flange TSFLANGC.
14.04	2	Whelen T-Series™ Linear Super-LED® Blue TSSOB with clear outer lens & chrome flange TSFLANGC.
14.05	7	Whelen M6 series, M6RC (or current model), Linear Super-LED lighthouse with internal flasher, RED LED's with CLEAR outer lens. Includes M6FC chrome flange.
14.06	7	Whelen M6 series, M6BC (or current model), Linear Super-LED lighthouse with internal flasher, BLUE LED's with CLEAR outer lens. Includes M6FC chrome flange.
14.07	1	Custom fabricated bracket to mount emergency lights above windshield, painted to match body.
15.00		<u>AUDIO / VIDEO:</u>
15.01	1	Samsung 32" QLED TV with wall mount bracket. Product features: • Resolution 4K • (3) HDMI, (2) USB • (2) Speakers • DTV Tuner/ATSC / Clear QAM • Dimensions: 28.5"(W) x 16.8"(H) x 1.2"(D) Weight 11.7lbs NOTE: Rear wall



CUSTOM SPECIALTY VEHICLES

180 Industrial Drive
 Burlington, WI 53105 USA
 Phone: 800-558-5986
 Fax: (262) 763-0156
 Direct: +1 (262) 763-0147
 www.ldvusa.com

Item	Qty	
15.02	2	Samsung 50" QLED TV with wall mount bracket. Product features: <ul style="list-style-type: none"> • Resolution 4K • (3) HDMI, (2) USB • (2) Speakers • DTV Tuner/ATSC / Clear QAM • Dimensions: 44"(W) x 25.5"(H) x 2.4"(D) Weight 20.3lbs NOTE: Front conference room
15.03	1	Winegard AIR 360 HDTV Omnidirectional Antenna.
15.04	1	Kramer VS-44H2 4X4 HDMI Matrix Switcher. 4K HDR HDCP 2.2 NOTE: Inputs: <ul style="list-style-type: none"> • (1) Input at conference table Outputs: <ul style="list-style-type: none"> • (3) Interior TV's
15.05	1	HDMI input jack, wall plate and cable. NOTE: HDMI input jack at front conference room table leg to matrix switcher.
15.06		HDMI connection cables, as required.
15.07		All RF cable for DSS antenna systems (when specified) shall be Belden #9116 series 6 broadband coaxial cable. All other video cabling shall be Belden #1505A RG-6/U precision video cable.
16.00		<u>MAST AND MAST MOUNTED EQUIPMENT:</u>
16.01	1	Fireco 2200 series heavy-duty non-locking telescoping pneumatic mast. Mast features: <ul style="list-style-type: none"> • 265 lb. max top load capacity • 26' 2" extended height • 6' 1" nested height Includes: <ul style="list-style-type: none"> • KEY-WAY breakaway nylon key prevents tower rotation. Easily replaceable. • Air safety valve for over pressure release and condensation drainage. • Water drainage holes to avoid freezing at low temperatures. • Interlock to prevent vehicle from being driven with mast raised. • Fireco tower does not require routine lubrication. • Mast cap covers the top of all tower sections when the tower is in the retracted position keeping dirt and moisture out of the tower when stowed.
16.02	1	Thomas Ultra Air-Pac 1/2-hp compressor with 2 gallon air tank.
16.03	1	Custom fabricated 0.125" aluminum Nycoil cylinder painted to match body color.
16.04	1	Custom fabricated 0.125" aluminum mast cover painted to match body color.
16.05	1	Custom fabricated aluminum mast mounting plate for camera. Includes: <ul style="list-style-type: none"> • Electrical connection box • Painted to match vehicle body color.
16.06	1	Mast lookup light mounted on mast.



CUSTOM SPECIALTY VEHICLES

180 Industrial Drive
Burlington, WI 53105 USA

Phone: 800-558-5986
Fax: (262) 763-0156
Direct: +1 (262) 763-0147
www.ldvusa.com

Item	Qty	
16.07	1	Weatherproof mast up/down control switch on exterior of vehicle.
16.08	1	<p>AXIS Q6358-LE PTZ Dome Network Camera</p> <ul style="list-style-type: none"> • 4K UHD, AI-powered PTZ for extreme low light • 1/2" sensor with 31x optical zoom • Forensic WDR, Lightfinder, and Optimized IR • AXIS Zipstream with AV1, H.264, H.265 • Next-generation AI-powered analytics • Built-in cybersecurity with Axis Edge Vault
16.09	1	<p>Axis D1110 4K Video Decoder</p> <ul style="list-style-type: none"> • Enables monitors that support HDMI to display live video from Axis network cameras • 4K Video with HDMI Out • Sequence and Multiview (up to 8 cameras)
16.10	1	<p>SD Memory Card for IP camera. The SD card shall record mast camera allowing it to be downloaded and viewable via an IP address.</p> <p>NOTE: 64GB</p>
17.00		<u>RADIOS:</u>
17.01		<p>Primary 12Vdc power leads for communications radios shall be minimum 2-gauge copper stranded wire with soldered crimp-on end connectors (gauge based on radio requirements). Cables shall be enclosed in convoluted tubing and function identified with colored shrink-wrap. Power to radios shall be controlled by a continuous-duty switch actuated by the auxiliary battery disconnect switch.</p>
17.02	5	<p>Prewire and make installation provisions for communications radio. Installation includes:</p> <ul style="list-style-type: none"> • NMO-style base on the roof or antenna raceway, as applicable. • LMR195 antenna cable routed to radio transceiver location in Carlon Carflex ENT conduit. • 12Vdc power routed to radio transceiver location. <p>NOTE: One (1) per workstation [qty.4] and one (1) at driver position</p>
17.03		Install hinged panels under countertops to conceal radio transceivers where applicable.
17.04		<p>3"H x 3"W square aluminum tube antenna raceway on the roof of the apparatus. Antenna raceway will penetrate the roof at one location, to be determined. Includes the following:</p> <ul style="list-style-type: none"> • 3" high x 3" long aluminum access cover at each antenna base location on the side of the tubing for access to antenna base and coax cable. • Access covers with watertight gasket and attached with four (4) stainless steel machine screws. Raceway tube to have nut-serts installed for access cover attachment. • Carlon Carflex ENT conduit routed from antenna raceway penetration location to radio transceiver locations. <p>NOTE: "L" shape up to 74" and up to 182"</p>
17.05	1	<p>Magnetic microphone holder. Magnetic Mic MMSU-1.</p> <p>NOTE: Siren/light control microphone</p>



CUSTOM SPECIALTY VEHICLES

180 Industrial Drive
Burlington, WI 53105 USA

Phone: 800-558-5986
Fax: (262) 763-0156
Direct: +1 (262) 763-0147
www.ldvusa.com

Item	Qty	
18.00		COMPUTER NETWORK AND EQUIPMENT:
18.01	14	RJ-45 Cat6 computer network jack with Cat6 cable routed through Carlon Flex-Plus ENT conduit or raceway (as applicable). NOTE: Locations: Two (2) per workstation [qty. 8] Four (4) conference table base Two (2) passenger front workstation
18.02	1	Leviton 69270-U24 24-port Cat6 rack mount patch panel.
18.03	1	Cable Certification Report confirming that network wiring complies with Cat6 specifications.
18.04	1	Pre-wire and make installation provisions for customer installed printer/fax/scanner. NOTE: (1) 110V AC outlet and (1) CAT6.
18.05	1	Make installation provisions for customer owned 5G wireless router with single modem. Includes weathertight box mounted on antenna raceway or roof for future mounting of antenna.
19.00		MISCELLANEOUS ELECTRONICS:
19.01	1	Middle Atlantic Products, Inc. MRK-4026 forty-space 19" wide x 26.5" depth (24" useable depth) open framed electronics equipment rack with caster base. Rack can easily slide out from its fixed position to allow side access to rack equipment.
19.02	1	Middle Atlantic VFD-40 Vented front door with Thumb Latch (No Key Lock). NOTE: Door is secured closed with thumb lock (key lock option for future).
19.03	1	Middle Atlantic MW-4FT top fan panel, with two (2) 50 cfm ventilation fans, QFAN.
19.04	1	Middle Atlantic PD-815SC-NS 15 amp power strip with eight (8) outlets. Includes PB-XS rack mounting bracket.
20.00		EXTERIOR STORAGE COMPARTMENTS:
20.01	1	Single door underbody storage compartment with approximate interior dimensions of 15" high x up to 60" wide x 25" deep constructed from 0.125" aluminum with all welded seams. NOTE: Storage
20.02		Compartments listed above will be constructed to the following specifications: <ul style="list-style-type: none"> • Sweep out type bottoms with 1/2" drain holes. • 2" box pan doors and door frames fabricated from 0.125" aluminum. • Door frames shall be riveted to the body and welded to the compartments. • Compartments shall have an LED light that illuminates when the door is opened. Compartment doors will be constructed to the following specifications: <ul style="list-style-type: none"> • Stainless steel hinges attached with stainless machine screws. • Slam latches and flush mounted handles. • 0.100" bright polished aluminum diamond plate on interior surfaces fastened with stainless hardware. • All doors shall be sealed with industrial grade neoprene gasket.

3/27/2026



CUSTOM SPECIALTY VEHICLES

180 Industrial Drive
Burlington, WI 53105 USA

Phone: 800-558-5986
Fax: (262) 763-0156
Direct: +1 (262) 763-0147
www.ldvusa.com

Item	Qty	
21.00		<u>MISCELLANEOUS OTHER:</u>
21.01	1	Automatic Awning with acrylic fabric and the following features: <ul style="list-style-type: none"> • Solid-state sensor automatically closes awning after detecting sustained winds • Exclusive Knee-Action Design prevents damage from sudden wind gusts • Heavy duty motor is fully contained in the roller tube, self-locks awning in travel position • Unique spring-arm mechanism automatically dumps accumulating rain water NOTE: Carefree Travel'r. Cadet Gray fabric and white case
21.02	1	15" wide roof access ladder mounted on rear. Ladder features: <ul style="list-style-type: none"> • All welded construction for maximum strength • 1" diameter X 0.083" brush finished tubular aluminum rails • Aluminum grip-strut rungs
21.03	1	Heavy-duty Quadra Mfg. Bigfoot® four point fully automatic one-touch leveling system. Includes: <ul style="list-style-type: none"> • Four (4) QEII-24 jacks with 17,000-lb. capacity each, 24" long with 18" stroke • Air ride dump valve • Fully automatic control panel with manual feature • Safety interlock when jacks are deployed
21.04	2	5 pound dry chemical fire extinguisher.
21.05	2	Battery powered combination Carbon Monoxide and Smoke alarm.
21.06	1	Complete manual set, including the following (as applicable): <ul style="list-style-type: none"> • As-built specifications with interior and exterior drawings as used for production of the vehicle. • Chassis and body owner's manuals. • 12Vdc and 120Vac legends showing wire gauge, color, number and function. • 12Vdc high current wiring diagram illustrating the battery system, isolators, power converters, alternator, disconnect switches and control panels. • Roof top antenna placement drawing and legend identifying antenna placements and termination points. • Audio/Video cabling diagram. • Chassis and generator maintenance and service logs. • Battery maintenance information. • All individual component manuals and warranty registration cards as provided by component manufacturers. Customer is responsible for completing warranty cards and mailing them to manufacturers.
21.07	1	TRAINING ONLY. LDV representative will provide up to eight (8) hours of orientation on LDV provided systems, as applicable: <ul style="list-style-type: none"> • Generator start up and shut down procedure • AC and DC electrical systems operation • HVAC systems operation • Audio/Video system operation, does not include programming of DVR's, TV's, etc.
21.08		Delivery



180 Industrial Drive
 Burlington, WI 53105 USA
 Phone: 800-558-5986
 Fax: (262) 763-0156
 Direct: +1 (262) 763-0147
 www.ldvusa.com

Item	Qty	
21.09		LDV warranty of one (1) year/12,000 miles, whichever comes first, for manufacturer's defects in materials and workmanship. Refer to LDV warranty statement for details of warranty coverage.
21.10		<p>Note: Project scope does not include certain tasks or costs that are the responsibility of the customer unless clearly specified as LDV supplied. These items include, but are not limited to:</p> <ul style="list-style-type: none"> • Radio and telephone system programming. • Activation and service fees for cellular telephones, satellite telephones, satellite TV, satellite internet access. • Loading and configuring computer software. <p>In the event of a discrepancy between the drawing and specification, the specification will supersede. LDV reserves the right to make substitutions of equal quality and specifications of those listed in this document.</p> <p>Some component models change frequently. In the event that a specified component model becomes unavailable at the time LDV attempts to source it, LDV will provide a replacement model with equivalent or better features, as agreed upon with the customer.</p>



180 Industrial Drive
Burlington, WI 53105 USA

Phone: 800-558-5986
Fax: (262) 767-2529
Direct: +1 (262) 763-0147
www.ldvusa.com

**PRELIMINARY
SPECIFICATIONS FOR:**

**BROWNSBURG PD (IN)
MOBILE INTERVIEW VEHICLE**

LDV PROPOSAL # C28MCC-36143-26

DATE

~~FEBRUARY 27, 2026~~
~~MARCH 9, 2026 REV1~~
MARCH 27, 2026 REV2



180 Industrial Drive
Burlington, WI 53105 USA

Phone: 800-558-5986
Fax: (262) 767-2529
Direct: +1 (262) 763-0147
www.ldvusa.com

TABLE OF CONTENTS

PRICING PAGE: 3

CHASSIS: 4

BODY: 6

PAINT / GRAPHICS: 6

DRIVER / PASSENGER CAB AREA: 7

WALLS, CEILING AND FLOOR: 7

GALLEY / LAVATORY: 8

SEATING: 8

CABINETS: 9

HVAC SYSTEM: 9

AC ELECTRICAL SYSTEM: 10

DC ELECTRICAL SYSTEM: 11

EMERGENCY LIGHTING / SIRENS: 12

AUDIO / VIDEO: 13

MAST AND MAST MOUNTED EQUIPMENT: 14

RADIOS: 15

COMPUTER NETWORK AND EQUIPMENT: 16

MISCELLANEOUS OTHER: 16



180 Industrial Drive
Burlington, WI 53105 USA

Phone: 800-558-5986
Fax: (262) 767-2529
Direct: +1 (262) 763-0147
www.ldvusa.com

PRICING PAGE:

(Sourcewell contract # 082025-LDV)

Total price per unit as specified, FOB Destination	\$457,516.00
Discount amount	-\$13,634.00
Sourcewell discounted price for 1 unit as specified	\$443,882.00
Delivery to: Brownsburg, IN	

Total price per unit	\$443,882.00
-----------------------------	---------------------

Delivery terms: Ask your Sales Representative.

Payment Terms: Net 30.

Quote is firm for 30 days from specification date.

Quoted price does not include any applicable FET, federal, state or local tax unless specified.
Please note that any applicable tariffs, duties, or import fees imposed after the issuance of this quotation will be the responsibility of the buyer. If such charges are incurred, they will be added to the final invoice.



CUSTOM SPECIALTY VEHICLES

180 Industrial Drive
Burlington, WI 53105 USA

Phone: 800-558-5986
Fax: (262) 763-0156
Direct: +1 (262) 763-0147
www.ldvusa.com

Item	Qty	
1.00		<p><u>CHASSIS/BODY DIMENSIONS:</u></p> <ul style="list-style-type: none"> 18' dry van • Cab-to-Axle 138" • Wheelbase of chassis: 205" • Overall length of apparatus: 348" • Overall apparatus width, rub rail to rub rail: 96" • Overall height of apparatus (loaded): 134" • Interior walkway height raw body: 83" • Interior walkway height finished: 81.5" • Interior walkway length: 216" • Interior raw body width: 93" • Interior finished body width: 87" <p>Final measurements are dependent on body builder, chassis components, axles, tires, frame, suspension, and roof-mounted equipment.</p>
2.00		<p><u>CHASSIS:</u></p>
2.01	1	<p>New Ford F-550 Regular Cab 2WD, DRW single rear axle gasoline chassis. 19,500-lb. GVWR with rear spring suspension and hydraulic brakes.</p> <p><u>ENGINE & TRANSMISSION:</u></p> <ul style="list-style-type: none"> • 7.3L V8 DEVCT variable valve gasoline (330 -hp @ 2200-rpm, 950-lb.ft of torque @ 1850-rpm). • Engine Block Heater • 190 Amp Alternator • 50 State Emissions System • Battery: 750 CCA, 78-Amp hour • 40 gallon fuel tank • 10-Speed TorqShift Automatic with overdrive • Top Speed – Must be able to obtain Highway speed of 65 Mph fully loaded. <p><u>AXLES & SUSPENSION</u></p> <ul style="list-style-type: none"> • 7,500 lb GAWR front axle • Front Mono-beam non-independent suspension with anti-roll bar, HD shocks • Power Steering • 14,706 lb GAWR rear axle • Rear rigid axle leaf spring suspension with anti-roll bar, HD shocks • Low deflection package • 4.88 Rear Axle Ratio • Brakes: 4-Wheel disc Anti-lock Braking System (ABS) <p><u>WHEELS & TIRES:</u></p> <ul style="list-style-type: none"> • Dual rear wheels • LT225/70SRx19.5G BSW A/P • 19.5" Argent Painted Steel Wheels • Front Tire Capacity 7500 lbs • Rear Tire Capacity 15000 lbs <p><u>CAB:</u></p>



CUSTOM SPECIALTY VEHICLES

180 Industrial Drive
Burlington, WI 53105 USA

Phone: 800-558-5986
Fax: (262) 763-0156
Direct: +1 (262) 763-0147
www.ldvusa.com

Item	Qty	
		<ul style="list-style-type: none"> • AM/FM Stereo w/MP3 Player, Includes 4 speakers, SYNC 4Includes 8" LCD capacitive touchscreen with swipe capability, wireless phone connection, cloud connected, AppLink with app catalog, 911 Assist, Apple CarPlay and Android Auto compatibility, digital owner's manual, steering wheel audio controls. • Air Conditioning • Electric Horn • Dome light • Heat and defrost • Factory installed Cruise Control with steering wheel controls • 40/Mini Console/40 Split Bench Seat, 4-way driver seat adjustment, Manual driver lumbar support, 4-way passenger seat adjustment • Seating Capacity –Standard cab/Two {2} personnel • Manual Tilt/Telescope Steering Wheel • Power steering • Windshield Wipers – variable intermittent • Digital/analog instrumentation display • Power windows and locks • Power door locks with 2 stage unlocking • All-in-one remote fob and ignition key • Chrome Front Bumper • Bright Grille • Light tinted windows • Front reading lights • Illuminated entry • Fade interior courtesy lights • Tow hooks – (2) front • Running boards • Sun visors • Insulated headliner • Manual Telescoping Folding Trailer Tow Mirrors, power/heated glass, heated convex spotter mirror and integrated clearance lamps/turn signals • Interior color - Medium Dark Slate • Paint color – Oxford White
2.02	1	Spring upgrade installed on rear suspension.
2.03	1	Federal Signal Back-up alarm model 210331.
2.04	1	Shift interlock to prevent shifting the vehicle when steps are deployed.
2.05	1	US DOT triangle reflector kit with three (3) triangles, for compliance with FMCSA regulations. Includes plastic storage case. Kit will be shipped loose in the vehicle.



CUSTOM SPECIALTY VEHICLES

180 Industrial Drive
Burlington, WI 53105 USA

Phone: 800-558-5986
Fax: (262) 763-0156
Direct: +1 (262) 763-0147
www.ldvusa.com

Item	Qty	
3.00		BODY:
3.01	1	<p>Load space area shall be 84" high (ID) x 96" wide (OD) x 18' (ID) long custom all aluminum dry van body with the following:</p> <ul style="list-style-type: none"> • Construction: (.040) Pre-painted white aluminum panels with aluminum "Z" posts on 16" centers • Rivetless smooth sided body • Skirting: 0.090 pre-painted white aluminum skirting. Same height as rear step and side door. • Radius Front: (5.5") Radius, aluminum front corner posts • Roof: (.032) Aluminum with bows 16" O.C. "Zephyr" 12" aluminum roof radius, polished aluminum castings on front corners and LED clearance lights. • Rear Frame: stainless steel • Side Doors: (2) Curbside 32" x 80" swing doors, swinging to front, with 14"x 20" laminated safety glass, Kason keyed to lock handle, recessed two (2) step aluminum step well, and drip rail over door. Interior lined with 1/8" aluminum tread plate. One forward and one aft of the rear axle. • Rear Doors: Solid rear with aluminum white sheet and aluminum Z post. • Rear: Closed face bumper step painted. • Floor: 1-1/8" Laminated hardwood. • Understructure: 3" I beam crossmembers on 12" centers with alternating crossmembers gusseted to long sills • Lights: Exterior - LED lights per FMVSS-108 with reflectors as required. • Mounting: Hardwood isolator with 5/8" zinc plated U-bolts installed through steel crush pipe between chassis frame. Structural steel channel anti-shift "standards" welded to long sills, one each side of the body.
3.02	2	Exterior heavy-duty fluted aluminum grab handle with rubber inserts and chrome plated stanchions installed at entry door.
3.03	2	Interior heavy-duty fluted aluminum grab handle with rubber inserts and chrome plated stanchions installed at entry door.
3.04	2	Stainless steel handrail assembly for stepwell, includes integral angled assist rail.
3.05	2	Automatic LED courtesy light at entry door.
3.06	2	<p>Lippert Treadlite 30" wide - single - automatic electric steel entry step mounted under entry door. Product features:</p> <ul style="list-style-type: none"> • Automatic LED ground light • Step remains extended unless ignition is turned on. <p>NOTE: Step light will be tied into courtesy light defeat.</p>
3.07	1	Maxxima LED Round combination stop/tail, turn and reverse lights.
3.08	1	Cast Products LP0004-1-B aluminum license plate mounting frame with LED light.
3.09	1	Entire underside shall be undercoated. Includes floor extrusions, step wells and aluminum compartments.
3.10	1	LDV rear mud flaps. Includes anti-sail brackets when required.
4.00		PAINT / GRAPHICS:
4.01		Body base color shall be white.



CUSTOM SPECIALTY VEHICLES

180 Industrial Drive
Burlington, WI 53105 USA

Phone: 800-558-5986
Fax: (262) 763-0156
Direct: +1 (262) 763-0147
www.ldvusa.com

Item	Qty	
4.02	1	4-inch wide reflective stripe on the exterior back and sides of the vehicle.
4.03	1	Custom computer-generated non-reflective vinyl graphics per customer specifications. Includes up to seventy 8"-10" letters and up to forty-five 3"-6" letters. All lettering can be shaded or outlined.
4.04	3	Custom computer-generated reflective vinyl shield. Customer shall supply true vector artwork required to produce shield.
5.00		<p><u>PATRIOT ONYX INTERIOR:</u></p> <ul style="list-style-type: none"> • Wall Covering Front Room: #66 Silver Smooth FRP • Wall Covering Rear Room: Chrome Carpet • Ceiling Fabric: Silver Mist • Floor Covering: #150 Onyx PVC Flooring • Office Chairs: Black • Vinyl Coverings: #WH1-2140 Whisper Black • Cabinets: #EBT-2-2002 Black Powder Coated Aluminum • Counters and Tables: #4880-38 Carbon Mesh <p>Note: Manufacturer reserves the right to substitute equivalent materials.</p>
6.00		<u>DRIVER / PASSENGER CAB AREA:</u>
6.01	1	Custom fabricated console in cab, for locating siren controller, police radio and/or other controls as specified elsewhere in this document.
6.02		<p>Cab Area Additions:</p> <ul style="list-style-type: none"> • Vehicle height sign on dash. • Vehicle shall have a Final Stage Vehicle Certification or Altered Vehicle Certification as required by Federal Motor Vehicle Safety Standards (FMVSS) 49 CFR Part 567.5 and 567.7 • Payload sticker in cab area with vehicle axle load ratings and available axle payload as built.
6.03	1	Color back up camera system with 7" LCD monitor and day/night camera.
7.00		<u>WALLS, CEILING AND FLOOR:</u>
7.01		Install wood furring strips on interior body side posts and roof supports to provide space for the installation of insulation, conduit and electrical boxes.
7.02		Insulate walls with a minimum of 2-1/2" of fiberglass insulation. Cover interior body side posts with 1/2" plywood sub wall.
7.03		Cover sub wall with smooth finish Kemlite 0.075" fiberglass reinforced plastic (FRP) lining. Wall covering shall be a continuous piece front to back, no seams acceptable.
7.04		Cover sub wall with ribbed loop pile carpet.
7.05		Insulate ceiling with a minimum of 2-1/2" of fiberglass. Cover interior roof supports with 1/2" plywood.
7.06		Cover sub ceiling with Silver Mist headliner material.
7.07		Floor underlayment to be 5/8" exterior grade tongue and groove structural plywood, 6 ply, face veneer plugged and sanded.
7.08		Lonseal Loncoin II Flecks non-skid commercial grade PVC flooring. The flooring shall be continuous, one piece full length, full width, no seams.
7.09		Vinyl cove molding (mop board) at base of wall, 2-1/2" high. Installed where required.



CUSTOM SPECIALTY VEHICLES

180 Industrial Drive
Burlington, WI 53105 USA

Phone: 800-558-5986
Fax: (262) 763-0156
Direct: +1 (262) 763-0147
www.ldvusa.com

Item	Qty	
7.10	1	Flush pocket door installed on heavy-duty aluminum c-channel track with two (2) three-wheel roller trucks. Pocket door shall have recessed handle and magnetic closure to keep the door open/closed.
7.11		All bulkheads shall be covered with materials to match walls. Trim exposed edges of bulkheads with rounded anodized aluminum trim where applicable.
7.12	2	Cover load space door with powder coated aluminum panel with heavy-duty rubber grab handle. NOTE: Interior window covering will be a blackout curtain.
8.00		<u>GALLEY / LAVATORY:</u>
8.01	1	Keurig K-Elite Coffee maker.
8.02	1	Pressurized Lavatory Water System. Includes: <ul style="list-style-type: none"> • Thetford Foot Pedal Flush model 31837 (or current model) low-profile toilet in lavatory. • Fresh water/waste tank level monitor in lavatory. • 10" round stainless steel lavatory sink with chrome plated sink hardware. • One (1) chrome plated paper towel holder and one (1) chrome plated toilet paper holder in lavatory. • Aqua Jet model #5503-AV15-B636 (or current model) 5.3 GPM water pump with accumulator tank. • One (1) 25 gallon fresh water supply and one (1) 30 gallon waste tank. • Plumbing pressure pipes shall be PEX tubing. • Underbody fresh water and grey water tanks are to be heated and all plumbing insulated and wrapped with heat tape. • Sewage hose and dump valve shall be provided for holding tank. • Winterizing valve mounted in line on the input side of the water pump. Valve allows antifreeze to be pumped throughout the system to winterize plumbing.
8.03	1	Rheem Electric Tankless Water Heater <ul style="list-style-type: none"> • 6,000W • 1.5 gpm Max. Flow Rate • 5.88" Overall Ht.
8.04	1	Custom fabricated stainless steel handrail.
8.05	1	Bobrick B-165 18" x 24" one-piece channel frame mirror with bright polished finish.
8.06	1	Bobrick B-4112 satin-finish stainless steel soap dispenser.
9.00		<u>SEATING:</u>
9.01	5	Space Air Grid office chair 5560 black with armrests, five caster spider base, and adjustable height. NOTE: No armrests
9.02	5	Securement strap with buckle installed under counter to secure office chair.
9.03		Fabricate and install fixed bench seating with removable cushions as shown on drawing. Bench seat cushions shall be covered in heavy-duty vinyl.



CUSTOM SPECIALTY VEHICLES

180 Industrial Drive
Burlington, WI 53105 USA

Phone: 800-558-5986
Fax: (262) 763-0156
Direct: +1 (262) 763-0147
www.ldvusa.com

Item	Qty	
9.04		<p><u>BENCH SEAT REQUIREMENTS:</u></p> <ul style="list-style-type: none"> • Foam for seat backs and bottoms shall be firm density. • All bench seating material must meet Federal Motor Vehicle Safety Standards part 571.302 Flammability of Interior Materials. • Material corners shall be squared or angled to fit precise cut of foam. • Foam shall be bonded to plywood backer with industrial grade adhesive. • Attachment of fabric/vinyl to backer shall utilize industrial grade upholstery staples.
10.00		<p><u>CABINETS:</u></p>
10.01		<p>Custom fabricated aluminum cabinets located as shown on drawing. Cabinet specifications:</p> <ul style="list-style-type: none"> • Base cabinets constructed of 0.080" powder coated aluminum with anodized aluminum frames. • Base cabinet doors are double shell, formed from a single sheet of 0.080" aluminum, with a 0.040" aluminum door back attached. • Overhead cabinets constructed of 0.064" powder coated aluminum with anodized aluminum frames. • Overhead cabinet doors are double shell, formed from a single sheet of 0.064" aluminum, with a 0.040" aluminum door back attached. • Overhead cabinet doors swing up with gas spring lift supports.
10.02		Radius edging incorporated as design permits.
10.03	1	<p>LED light with on/off switch, mounted under overhead cabinet.</p> <p>NOTE: Located on the bottom of the Electronics rack cabinet</p>
10.04		Countertops shall be covered in 0.040" Wilsonart laminate. All exposed edges shall be covered with heavy duty flexible PVC T-molding.
10.05		Conference table covered in 0.040" Wilsonart laminate. All exposed edges shall be covered with heavy duty flexible PVC T-molding.
10.06	1	Powder coated 0.125" aluminum conference table base.
10.07	1	Powder coated 0.125" aluminum table leg.
10.08	1	120/240Vac Control Center, 12Vdc power panels, master disconnect switch and auto resetting breakers shall be located in cabinet as shown on drawing.
11.00		<p><u>HVAC SYSTEM:</u></p>
11.01	1	Fan-tastic Vent model 1450 3-speed reversible 12" power roof ventilator.
11.02	1	<p>Low profile air conditioner with thermostat. Includes:</p> <ul style="list-style-type: none"> • 15,000 nominal Btu/hr air conditioner with condensation drains. • Ceiling Assembly with 6,000 Btu/hr heat strip • Wall mounted thermostat (white)
11.03	1	Duct air conditioner through pocket door header with surface mounted duct. Duct to be covered with ceiling fabric.
11.04	1	Room to Room through wall Fan to pull ambient air from working area into the lavatory.



CUSTOM SPECIALTY VEHICLES

180 Industrial Drive
Burlington, WI 53105 USA

Phone: 800-558-5986
Fax: (262) 763-0156
Direct: +1 (262) 763-0147
www.ldvusa.com

Item	Qty	
11.05	2	5,800-12,000 Btu/hr direct discharge, 12Vdc powered, gasoline-fired furnace with individual thermostat control. Exhaust shall be routed to the street side. NOTE: <ul style="list-style-type: none"> • (1) In rear room streetside benchseat base ducted to the front room • (1) In the rear room aft of the entry door
12.00		AC ELECTRICAL SYSTEM:
12.01	1	Onan 7kW 120/240V EFI Inverter AC generator 7HGLCA-8312 mounted in custom fabricated all aluminum compartment. Product features: <ul style="list-style-type: none"> • Sound rating at 10 ft (3 m) full load: 70 dB(A) • Cummins Onan OHV engine • Overspeed/underspeed protection • Fuel consumption is as follows: 50% load = 0.73 GPH, full load = 1.22 GPH <p>Compartment shall be constructed to the following specifications:</p> <ul style="list-style-type: none"> • Compartment shall be constructed from 0.187" aluminum with all welded seams. • Compartment shall have 0.125" aluminum 2" box pan door and 0.125" aluminum frame. • Door frame shall be riveted to the body and welded to the compartment. • Door shall have stainless steel hinge attached to the door and door frame with stainless machine screws. • Door shall be sealed with industrial grade neoprene gasket. NOTE: Generator exhaust shall be routed to the street side of the vehicle.
12.02	1	ACData surge suppressor for protection of entire AC power system. Product features: <ul style="list-style-type: none"> • UL listed: UL1449 3rd Edition • LED visual verification of status
12.03	1	60A-120/240Vac and 12Vdc combined electrical control panel with the following features: <ul style="list-style-type: none"> • Generator and shore power main breakers • Six (6) AC UL listed magnetic/hydraulic branch circuit breakers with LED indicators • Six (6) DC UL listed magnetic/hydraulic circuit breakers with LED indicators • Digital AC meters: voltage, amperage • Digital DC voltmeter • Generator stop/start switch, generator hour meter
12.04		120Vac auxiliary control panels as required with UL listed magnetic/hydraulic circuit breakers and LED indicators.
12.05	1	Kussmaul Auto Eject 20, 20A-120Vac shore power inlet with 25-ft. 20A-120Vac shore power cord. #091-20WP-120RD.
12.06	1	20A-125Vac duplex receptacle. Receptacle is not dedicated to any installed equipment. NOTE: <ul style="list-style-type: none"> • Located in electronics rack

Item	Qty	
12.07	5	20A-125Vac duplex receptacle with dual USB charging ports [one (1) Type A and one (1) Type C]. Receptacle is not dedicated to any installed equipment. NOTE: <ul style="list-style-type: none"> • (2) Rear wall above conference table • (2) Streetside wall above conference table • (1) Curbside wall above countertop
12.08	1	20A-125Vac GFCI duplex receptacle. These receptacles are not dedicated to any installed equipment. NOTE: Located curbside wall above countertop for Keurig
12.09	1	20A-125Vac exterior GFCI duplex receptacle. NOTE: Receptacle will be installed with a weatherproof cover. Location TBD.
12.10	1	Will-Burt Night Scan NS2.3-600WHL (or current model) 120Vac light tower. Includes: <ul style="list-style-type: none"> • Four (4) Pioneer x 150 watt LED Spot/Flood light (PCP2ASF) • Hand held (wired) remote control (SHIP LOOSE) • 50ft control cable • Additional roof support structure, as required.
12.11		<u>AC WIRING REQUIREMENTS:</u> <ul style="list-style-type: none"> • All AC main wiring shall be stranded THHN wire and run in non-metallic liquid tight conduit. • All AC branch circuit wiring shall be stranded THHN wire (AWG 12 minimum) and run in non-metallic liquid tight and ENT conduit. • All electrical circuits and appliances shall conform to applicable national electrical codes.
13.00		<u>DC ELECTRICAL SYSTEM:</u>
13.01	2	60 amp electronic converter/charger. Product features: <ul style="list-style-type: none"> • Charges up to three banks of batteries at the same time. • UL listed for safety. • Manual reset circuit breaker. • Reverse battery protection. • Electronic current limiting. • High voltage protection.
13.02	1	Two (2) 6V Deep Cycle Glass Mat Batteries mounted in the interior in custom fabricated sealed battery box vented to exterior.
13.03	1	Battery combiner automatically combines the battery banks during charging and isolates when no charging sensed on either bank. A three position control switch allows an operator to manually combine or separate batteries, to jump start engine or troubleshoot a failure.
13.04	1	12Vdc control panel with four (4) UL listed magnetic/hydraulic circuit breakers with red LED indicators.
13.05	1	Dual Auxiliary Battery Disconnect System. Enables auxiliary battery disconnect to be activated from cab or load space area.
13.06	12	Light, Orion 6" LED, neutral white with polished bezel and voltage regulation.
13.07	4	Light, Orion 6" LED, neutral white / red with polished bezel and voltage regulation.



CUSTOM SPECIALTY VEHICLES

180 Industrial Drive
Burlington, WI 53105 USA

Phone: 800-558-5986
Fax: (262) 763-0156
Direct: +1 (262) 763-0147
www.ldvusa.com

Item	Qty	
13.08	6	Whelen M9LZC Gradient LED Scene Light with chrome flange. NOTE: Two (2) Streetside Two (2) Curbside Two (2) Rear
13.09		<u>12VDC WIRING REQUIREMENTS:</u> <ul style="list-style-type: none"> • 2-gauge minimum copper stranded battery cable shall be used for 12Vdc main supply lines. All cable runs shall be full length, no splices. All cable terminals shall be staked and soldered. All cable shall be enclosed in convoluted polyethylene tubing and the ends of the cable shall be sealed with color-coded shrink-wrap identifying the function of the cable. • All added electrical branch circuits shall be protected from over-current by resettable circuit breakers appropriately rated for the load. Only circuit breakers shall be used in the installation of added electrical branch circuit wiring (plug type fuses are unacceptable). • Circuit breaker functions shall be identified by engraved or printed labels. • All added wiring for load runs of AWG 10, 12, 14, and 18, shall conform to MIL-W-16878/2 and/or UL1007/1569" • All added wiring for load runs of AWG 8, shall conform to MIL-W-16878/3 and/or UL1028 • Wire terminals for added circuits must conform to MIL-T-7928. Terminals shall be insulated, insulation grip, TYPE II, CLASS 2 and shall be crimped with tooling recommended by the terminal manufacturer. • All wiring shall be numbered or lettered on 6" centers minimum. • Wiring shall be protected from chafing and abrasion with convoluted polyethylene tubing (wire loom) as required. • Where wire passes through sheet metal, bulkheads and structural supports, plastic grommets shall be used to protect both wiring and wire looms. • All wire bundles shall be tied with trimmed nylon ties. • Extreme care shall be exercised to provide for easy serviceability of the system in future years. • Extreme care must be taken in the installation to avoid the engine manifold, engine exhaust, and muffler, which could expose the wiring to severe overheating during long periods of operation. Proper insulation and heat deflection panels must be installed in such areas. • A high-current 12Vdc system wiring schematic shall be provided. • These are the minimum acceptable 12Vdc wiring requirements.
14.00		<u>EMERGENCY LIGHTING / SIRENS:</u>
14.01	1	Whelen 295SLSA6 siren with 9 low current lighting control switches. California Title 13 compliant. NOTE: Slide Bar Positions Control: 1. Rear (Upper and Lower) 2. Rear (Upper and Lower), All Upper, Front Wall or "Light bar" 3. All
14.02	1	Whelen SA315P high performance, multi-port 100 watt speaker with Whelen SAK61AD driver side mount.



CUSTOM SPECIALTY VEHICLES

180 Industrial Drive
Burlington, WI 53105 USA

Phone: 800-558-5986
Fax: (262) 763-0156
Direct: +1 (262) 763-0147
www.ldvusa.com

Item	Qty	
14.03	1	Whelen T-Series™ Linear Super-LED® Red TSSOR with clear outer lens & chrome flange TSFLANGC. NOTE: Mounted in Grille
14.04	1	Whelen T-Series™ Linear Super-LED® Blue TSSOB with clear outer lens & chrome flange TSFLANGC. NOTE: Mounted in Grille
14.05	7	Whelen M6 series, M6RC (or current model), Linear Super-LED lighthouse with internal flasher, RED LED's with CLEAR outer lens. Includes M6FC chrome flange. NOTE: • (2) Streetside • (2) Curbside • (2) Rear • (1) Front
14.06	7	Whelen M6 series, M6BC (or current model), Linear Super-LED lighthouse with internal flasher, BLUE LED's with CLEAR outer lens. Includes M6FC chrome flange. NOTE: • (2) Streetside • (2) Curbside • (2) Rear • (1) Front
14.07	1	Whelen M7 series Linear Super-LED lighthouse with internal flasher, RED LED's with clear outer lens. model M7RC Includes chrome flange M7FC. NOTE: • Curbside front fender
14.08	1	Whelen M7 series Linear Super-LED lighthouse with internal flasher, BLUE LED's with clear outer lens. model M7BC Includes chrome flange M7FC. NOTE: • Streetside front fender
15.00		AUDIO / VIDEO:
15.01	2	Samsung - 43" QLED TV with wall mount bracket. Product features: • Resolution 4K • (3) HDMI, (2) USB • (2) Speakers • DTV Tuner/ATSC / Clear QAM • Dimensions: 38"(W) x 22"(H) x 2.4"(D) Weight 15.7lbs NOTE: • (1) Streetside above conference table • (1) Curbside wall between entry door and electronics rack cabinet



CUSTOM SPECIALTY VEHICLES

180 Industrial Drive
Burlington, WI 53105 USA

Phone: 800-558-5986
Fax: (262) 763-0156
Direct: +1 (262) 763-0147
www.ldvusa.com

Item	Qty	
15.02	2	Axis P3265-V dome network camera and one (1) AXIS D1110 4K Video Decoder. Camera features: <ul style="list-style-type: none"> • Vandal-resistant • 1080p with audio • Lightfinder 2.0 • Forensic WDR • 2MP image quality NOTE: Both will be inputs to the Matrix
15.03	1	Kramer VS-44H2 4X4 HDMI Matrix Switcher. 4K HDR HDCP 2.2 NOTE: Inputs: <ul style="list-style-type: none"> • Mast Camera • Streetside Dome Camera in rear room • Curbside Dome Camera in rear room Outputs: <ul style="list-style-type: none"> • 43" Streetside TV above conference table • 43" Curbside TV on wall between entry door and electronics rack cabinet
15.04	2	HDMI input jack, wall plate and cable. NOTE: <ul style="list-style-type: none"> • Locate streetside wall above conference table - (1) To Streetside TV - (1) To Curbside TV
15.05		HDMI connection cables, as required.
16.00		<u>MAST AND MAST MOUNTED EQUIPMENT:</u>
16.01	1	Fireco 2200 series heavy-duty non-locking telescoping pneumatic mast. Mast features: <ul style="list-style-type: none"> • 265 lb. max top load capacity • 26' 2" extended height • 6' 1" nested height Includes: <ul style="list-style-type: none"> • KEY-WAY breakaway nylon key prevents tower rotation. Easily replaceable. • Air safety valve for over pressure release and condensation drainage. • Water drainage holes to avoid freezing at low temperatures. • Interlock to prevent vehicle from being driven with mast raised. • Fireco tower does not require routine lubrication. • Mast cap covers the top of all tower sections when the tower is in the retracted position keeping dirt and moisture out of the tower when stowed.
16.02	1	Thomas Ultra Air-Pac 1/2-hp compressor with 2 gallon air tank.
16.03	1	Custom fabricated 0.125" aluminum Nycoil cylinder painted to match body color.
16.04	1	Custom fabricated 0.125" aluminum mast cover painted to match body color.
16.05	1	Custom fabricated bracket on mast to mount two individual camera systems.



CUSTOM SPECIALTY VEHICLES

180 Industrial Drive
Burlington, WI 53105 USA

Phone: 800-558-5986
Fax: (262) 763-0156
Direct: +1 (262) 763-0147
www.ldvusa.com

Item	Qty	
16.06	1	Mast lookup light mounted on mast.
16.07	1	Weatherproof mast up/down control switch on exterior of vehicle.
16.08	1	<p>AXIS Q6358-LE PTZ Dome Network Camera</p> <ul style="list-style-type: none"> • 4K UHD, AI-powered PTZ for extreme low light • 1/2" sensor with 31x optical zoom • Forensic WDR, Lightfinder, and Optimized IR • AXIS Zipstream with AV1, H.264, H.265 • Next-generation AI-powered analytics • Built-in cybersecurity with Axis Edge Vault
16.09	1	<p>Axis D1110 4K Video Decoder</p> <ul style="list-style-type: none"> • Enables monitors that support HDMI to display live video from Axis network cameras • 4K Video with HDMI Out • Sequence and Multiview (up to 8 cameras)
16.10	1	<p>SD Memory Card for IP camera. The SD card shall record mast camera allowing it to be downloaded and viewable via an IP address.</p> <p>NOTE: 256GB</p>
17.00		<u>RADIOS:</u>
17.01		<p>Primary 12Vdc power leads for communications radios shall be minimum 2-gauge copper stranded wire with soldered crimp-on end connectors (gauge based on radio requirements). Cables shall be enclosed in convoluted tubing and function identified with colored shrink-wrap. Power to radios shall be controlled by a continuous-duty switch actuated by the auxiliary battery disconnect switch.</p>
17.02	1	<p>Prewire and make installation provisions for communications radio. Installation includes:</p> <ul style="list-style-type: none"> • NMO-style base on the roof or antenna raceway, as applicable. • LMR195 antenna cable routed to radio transceiver location in Carlon Carflex ENT conduit. • 12Vdc power routed to radio transceiver location. <p>NOTE: Customer supplied radios and locations: Cab Area • Qty. - Make/Model, Freq/Power Out/Trunk or Dash Mounted</p>
17.03	1	<p>Single 3"H x 3"W x 12'L square aluminum tube antenna raceway on the roof of the apparatus. Antenna raceway will penetrate the roof at one location, to be determined. Includes the following:</p> <ul style="list-style-type: none"> • 3" high x 3" long aluminum access cover at each antenna base location on the side of the tubing for access to antenna base and coax cable. • Access covers with watertight gasket and attached with four (4) stainless steel machine screws. Raceway tube to have nut-serts installed for access cover attachment. • Carlon Carflex ENT conduit routed from antenna raceway penetration location to radio transceiver locations.
17.04	2	Magnetic microphone holder. Magnetic Mic MMSU-1.



CUSTOM SPECIALTY VEHICLES

180 Industrial Drive
Burlington, WI 53105 USA

Phone: 800-558-5986
Fax: (262) 763-0156
Direct: +1 (262) 763-0147
www.ldvusa.com

Item	Qty	
18.00		COMPUTER NETWORK AND EQUIPMENT:
18.01	4	RJ-45 Cat6 computer network jack with Cat6 cable routed through Carlon Flex-Plus ENT conduit or raceway (as applicable). NOTE: • (2) Rear wall above conference table • (2) Streetside wall above conference table
18.02	1	Leviton 69270-U24 24-port Cat6 rack mount patch panel.
18.03		Certified 18" Cat6 patch cord. As Required.
18.04	1	Cable Certification Report confirming that network wiring complies with Cat6 specifications.
18.05	1	Cradlepoint E3000 cellular router with WiFi (5G Modem) and 1-year NetCloud Enterprise Branch Essentials Plus Advanced Plan.
18.06	1	Cellular modem 9 in 1 antenna with GNSS. PCTEL GL9X1AX Multi-Band MIMO High Rejection 5G & 4G LTE WiFi GNSS 5x SMA Male 4x RP SMA Male, Threaded-Bolt Mount, 17 FT Cabling With SMA Connectors for Cell/GNSS, and RP-SMA for WIFI, Black.
19.00		MISCELLANEOUS OTHER:
19.01	1	Heavy-duty Quadra Mfg. Bigfoot® four point fully automatic one-touch leveling system. Includes: • Two (2) QEI-14 jacks with 12,000-lb. capacity each, 18.5" long with 14" stroke • Two (2) QEII-24 jacks with 17,000-lb. capacity each, 24" long with 18" stroke • Fully automatic control panel with manual feature • Safety interlock when jacks are deployed
19.02	1	Set of four (4) Super Dolly Pads high density polypropylene, injection molded yellow colored for use with leveling system jacks. Pads measure 15" x 17" x 1" thick with a grab strap on one side.
19.03	1	5 pound dry chemical fire extinguisher.
19.04	2	Battery powered combination Carbon Monoxide and Smoke alarm.
19.05	1	Complete manual set, including the following (as applicable): • As-built specifications with interior and exterior drawings as used for production of the vehicle. • Chassis and body owner's manuals. • 12Vdc and 120Vac legends showing wire gauge, color, number and function. • 12Vdc high current wiring diagram illustrating the battery system, isolators, power converters, alternator, disconnect switches and control panels. • Roof top antenna placement drawing and legend identifying antenna placements and termination points. • Audio/Video cabling diagram. • Chassis and generator maintenance and service logs. • Battery maintenance information. • All individual component manuals and warranty registration cards as provided by component manufacturers. Customer is responsible for completing warranty cards and mailing them to manufacturers.



CUSTOM SPECIALTY VEHICLES

180 Industrial Drive
 Burlington, WI 53105 USA
 Phone: 800-558-5986
 Fax: (262) 763-0156
 Direct: +1 (262) 763-0147
 www.ldvusa.com

Item	Qty	
19.06	1	TRAINING. An LDV representative will provide up to four (4) hours of orientation on LDV provided systems, as applicable: <ul style="list-style-type: none"> • Generator start up and shut down procedure • AC and DC electrical systems operation • HVAC systems operation • Audio/Video system operation, does not include programming DVR's, TV's, etc.
19.07		Delivery to: Brownsburg, IN
19.08		LDV warranty of one (1) year/12,000 miles, whichever comes first, for manufacturer's defects in materials and workmanship. Refer to LDV warranty statement for details of warranty coverage.
19.09		<p>Note: Project scope does not include certain tasks or costs that are the responsibility of the customer unless clearly specified as LDV supplied. These items include, but are not limited to:</p> <ul style="list-style-type: none"> • Radio and telephone system programming. • Activation and service fees for cellular telephones, satellite telephones, satellite TV, satellite internet access. • Loading and configuring computer software. <p>In the event of a discrepancy between the drawing and specification, the specification will supersede. LDV reserves the right to make substitutions of equal quality and specifications of those listed in this document.</p> <p>Some component models change frequently. In the event that a specified component model becomes unavailable at the time LDV attempts to source it, LDV will provide a replacement model with equivalent or better features, as agreed upon with the customer.</p>